

ISE

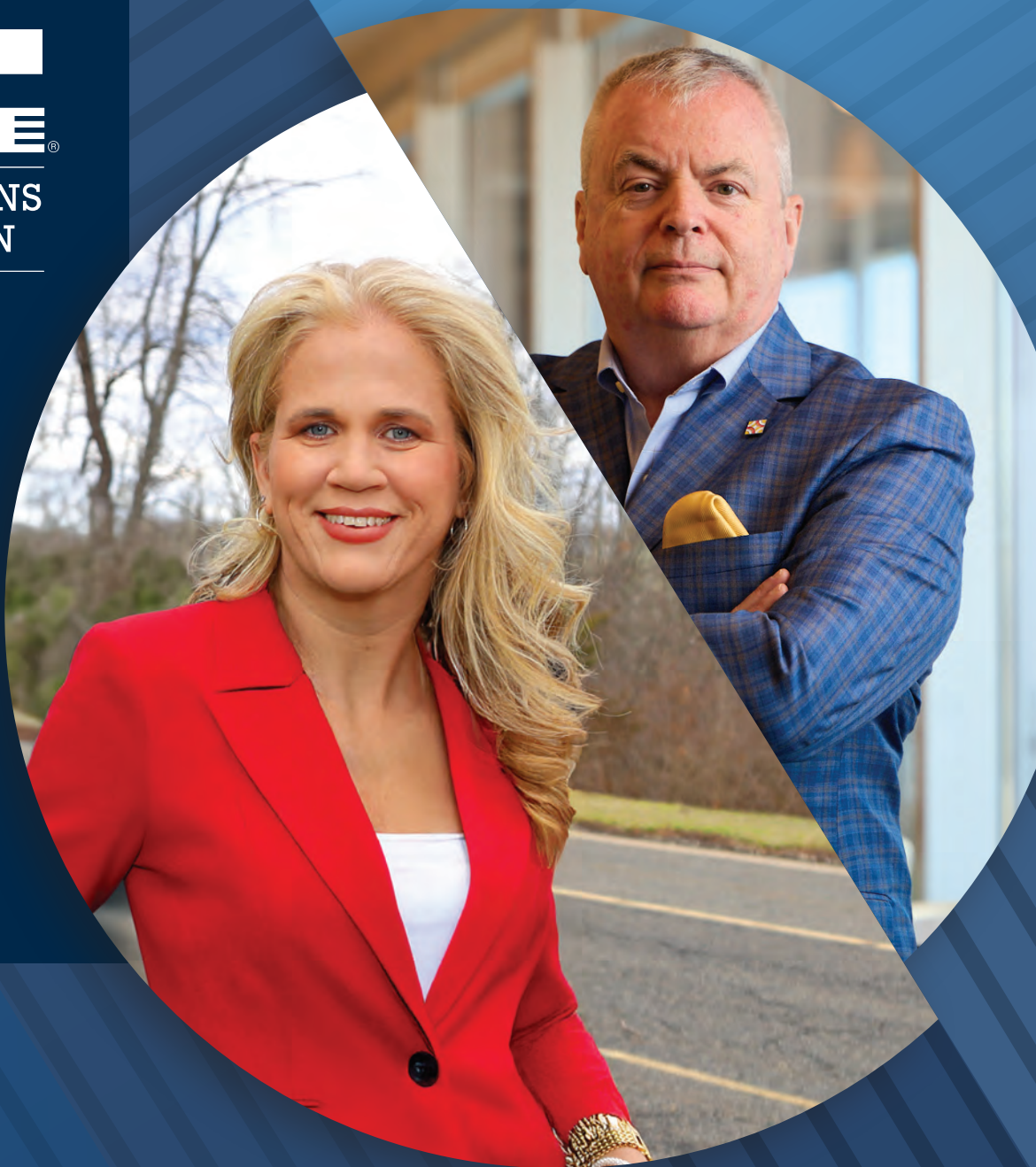
**ICT SOLUTIONS
& EDUCATION**

**Open Source and
Open Broadband
Standards Offer
the Ingredients
for Success P. 76**

**The Need for
Legislation
for Broadband
and Wireless
Infrastructure
Permitting P. 79**

**Is Your Fiber
Network Routed
for Success? P. 82**

**The Case for
Environmentally
Sustainable FTTH
Networks P. 84**



EXECUTIVE INSIGHTS WITH
**ISE EXPO's Opening and
Closing Keynotes**
FROM VERIZON AND BRIGHTSPEED



SCAN TO
SUBSCRIBE OR
RENEW!



MILLENNIUM

POWERING THE FUTURE OF BROADBAND

Connecting communities - one network build at a time



ENGINEERING



SUPPLY CHAIN



EQUIPMENT



FUNDING

The next era in high-speed connectivity is here, and broadband providers are racing to build the networks of tomorrow. Speed to market will decide who leads the way.

That's where Millennium steps in—as a proud sponsor of the ISE Expo, we empower providers to close the connection gap with unmatched urgency and execution. From engineering and equipment to funding and supply chain solutions, we deliver the expertise and tools to accelerate your fiber network builds and minimize risk.

In this new age of opportunity, Millennium is the trusted partner to bring your high-speed fiber networks to life, ensuring your business and the communities you serve realize their full potential.

Let's Build What's Next, Together.

info@mtpllc.us | 866.287.7830 | mymillennium.us

ISE EXPO

ICT SOLUTIONS & EDUCATION

JULY 29-31, 2025
New Orleans, LA

**SCAN TO SCHEDULE
YOUR MEETING AT:**

BOOTH #1328



"We use AI extensively in network planning, deployment, and operations. This includes resource optimization, coverage optimization, scheduling optimization, and performance/usage assessment through our AI-powered Network Genie tool."

JULIE SLATTERY, SVP, CORE ENGINEERING & OPERATIONS, VERIZON – PAGE 12

CONTENTS

SUMMER 2025

12 COVER STORIES

Executive Insights with ISE EXPO's Opening Keynote Presenter, Julie Slattery, SVP, Core Engineering & Operations, Verizon

Learn how Julie leads her 7K team members to leverage AI, fiber, FWA, hybrid networks, and satellite coverage to power the future of connectivity. And don't miss the superpower Julie believes all leaders must leverage to empower team members.

20 Executive Insights with ISE EXPO's Closing Keynote Presenter, Tom Maguire, Founding Leader and Board Member, Brightspeed

Learn why we've asked Tom Maguire to deliver a keynote not once, not twice, but three times.



27 ISE EXPO 2025 ISE EXPO 2025 Program Guide

At ISE EXPO, **Innovation Meets Connectivity**, bridging the gap between today's challenges and tomorrow's opportunities. Whether you're a broadband operator, network engineer, manufacturer, or business leader, this is your chance to stay ahead of industry trends and connect with peers driving the future of connected infrastructure. Check out this year's program guide.



76 NETWORK TRANSFORMATION Open Source and Open Broadband Standards Offer the Ingredients for Success

How open-source blueprints and broadband standards are shaping smarter, more efficient service delivery.

79 NETWORK TRANSFORMATION The Need for Legislation for Broadband and Wireless Infrastructure Permitting

Why Congress must act now on wireless infrastructure permitting.

82 FTTX/OPTICAL NETWORKS Is Your Fiber Network Routed for Success?

To future-proof their investments, fiber providers must think beyond passings and plan for adaptability and depth.



CONTENTS

SUMMER 2025

84 SUSTAINABILITY The Case for Environmentally Sustainable FTTH Networks

Sustainable FTTH networks are helping operators cut energy use, reduce maintenance needs and improve reliability.

88 MOBILE EVOLUTION How Cable is Outmaneuvering Traditional Mobile Network Operators

The convergence of broadband and mobile is reshaping telecom—and cable companies are leading the charge.



IN EVERY ISSUE

6 EDITOR'S NOTE Designing for Durability

Editor Hayden Beeson explores how strategic thinking is reshaping today's network deployments.

8 FIBER OPTIC EXPERT The Perils of Irrational Exuberance

Reflecting on the Dot-Com Boom and its impact on the fiber industry.

10 NETWORK AND SECURITY EXPERT Beyond Generative AI

Why GenAI isn't enough. A new approach to smarter, human-guided cybersecurity.

90 ADVERTISER INDEX



Market Leader, Digital Infrastructure

Peter Fretty
pfretty@endeavorb2b.com

Editorial Director

Patrick McLaughlin
pmclaughlin@endeavorb2b.com

Content Ambassador

Sharon Vollman
svollman@endeavorb2b.com

Editor

Hayden Beeson
hbeeson@endeavorb2b.com

Managing Editor

Lisa Weimer
lweimer@endeavorb2b.com

Art Director

Meg Fuschetti

Associate Publisher

Carrie Kirkbride
ckirkbride@endeavorb2b.com

Director of Business Development

Tim Carli
tcarli@endeavorb2b.com

ISE EXPO Account Executive

Robin Queenan
rqueenan@endeavorb2b.com

Production Manager

Josh Troutman
jtroutman@endeavorb2b.com

Ad Services Manager

Melissa Meng
mmeng@endeavorb2b.com

Circulation Manager

Laura Moulton
lmoulton@endeavorb2b.com



ENDEAVOR BUSINESS MEDIA, LLC

CEO Chris Ferrell

COO Patrick Rains

CRO Paul Andrews

CDO Jacquie Niemiec

CALO Tracy Kane

CMO Amanda Landsaw

**EVP Healthcare, City Services
& Digital Infrastructure** Kylie Hirko

ISE Magazine USPS Permit 1511, ISSN 2470-0517 print, ISSN 2470-0525 online is published 4 times annually, spring, summer, fall, winter by Endeavor Business Media, LLC, 201 N Main St., 5th Floor, Fort Atkinson, WI 53538. Periodicals postage paid at Fort Atkinson, WI, and additional mailing offices. **POSTMASTER:** Send address changes to ISE Magazine, PO Box 3257, Northbrook, IL 60065-3257. **SUBSCRIPTIONS:** Publisher reserves the right to reject non-qualified subscriptions. Subscription prices: U.S. \$32.00 per year; Canada/Mexico \$50.00 per year; All other countries \$115.00 per year. All subscriptions are payable in U.S. funds. Customer service can be reached toll-free at 877-382-9187 or at ISE@omeda.com for magazine subscription assistance or questions.

Printed in the USA. Copyright 2025 Endeavor Business Media, LLC. All rights reserved. No part of this publication may be reproduced or transmitted in any form or by any means, electronic or mechanical, including photocopies, recordings, or any information storage or retrieval system without permission from the publisher. Endeavor Business Media, LLC does not assume and hereby disclaims any liability to any person or company for any loss or damage caused by errors or omissions in the material herein, regardless of whether such errors result from negligence, accident, or any other cause whatsoever. The views and opinions in the articles herein are not to be taken as official expressions of the publishers, unless so stated. The publishers do not warrant either expressly or by implication, the factual accuracy of the articles herein, nor do they so warrant any views or opinions by the authors of said articles.

ISE
ICT SOLUTIONS
& EDUCATION
FOLLOW US



ISE.Magazine



ise-magazine



ISE_Magazine



@isemagazine8108

Continue your professional development with more articles online at www.isemag.com.

ENABLING HARDENED CONNECTIVITY FOR ALL

USCONEC



HEC - DC

HARDENED CONNECTOR PLATFORM

MPO | LC Duplex | SC Simplex



A harsh-environment connector with proven
performance & reliability from your trusted partner.

WWW.USCONEC.COM



Designing for Durability

AS THE BROADBAND LANDSCAPE EVOLVES, it's becoming increasingly clear that building networks today is no longer just a technical challenge; it's a strategic one. Across the industry, we're seeing a shift from speed to sustainability, from isolated solutions to integrated ecosystems, and from reactive upgrades to proactive design.

This issue of ISE Magazine reflects that shifting mindset. Whether the conversation is about fiber deployments, open-source tools, permitting frameworks or AI, a shared theme runs through it all: infrastructure must be built with tomorrow in mind. The choices made in the planning stages will shape not only performance but long-term viability.

There's a sense, too, that many leaders have seen this cycle before. Lessons from earlier eras, when exuberance outpaced planning, are shaping today's decisions. There's caution but also confidence.

More than ever, user needs are steering the direction of innovation. It's not just about delivering connectivity; it's about delivering value, clarity and adaptability to the people and communities who rely on it.

I hope the perspectives in this issue help you think about what's next, not as a disruption to prepare for, but as a future already underway.



Hayden Beeson

EDITOR

hbeeson@endeavorb2b.com

Follow Hayden on LinkedIn for further conversation and insights.

[@hayden-beeson-b2551a210](https://www.linkedin.com/in/hayden-beeson-b2551a210)

Visit www.isemag.com/contribute for more information on submitting an article to ISE Magazine in print, digital, and online.



Turn to PAGE 27 to view the ISE EXPO Program Guide and visit www.iseexpo.com for the latest updates.

See you in New Orleans!



SEE WHAT'S NEXT IN FIBER CONNECTIVITY WITH AFL

With decades of experience, AFL's fiber connectivity products are tried and tested like no others. Our experience in the field is proven success that you can count on for products you deploy now and in the future.

Stop by **booth #839** at **ISE Expo 2025** to explore AFL's latest innovations, including our family of Apex® Fiber Optic Splice Closures and Switchblade® Fiber Containment Vaults. And don't forget to ask us what's new - we've got something exciting we can't wait to tell you about.



[AFLglobal.com](https://aflglobal.com)

The Perils of Irrational Exuberance

The 25th Anniversary of the Dot-Com Boom

ON MARCH 10, 2000, the value of internet stocks riding the waves of hype created by the newly commercialized internet reached their peak. Soon after, the "Dot-Com Boom" became the "Dot-Com Bubble" and burst spectacularly. The impact on technology fields, particularly fiber optics, was devastating. I lived through the whole Dot-Com Boom, bubble and bust, so I'm speaking from experience.

Most people today do not remember the world before the internet. Some of us in the tech businesses were using email back in the 1980s. I registered my name as an internet domain in 1992. In 1993, the first web browser, Mosaic, was introduced, and the World Wide Web became available to a widespread audience. Some of us techie nerds figured out how to use it and started creating web pages. My first page was one of the first 30,000 web pages.

The U.S. government provided seed money to commercialize the internet. That helped inform the public about the potential uses of the internet. What followed was an explosion of interest and investment, creating a major boom in building fiber optic networks to support the Internet.

During the boom years (1995-2000), perhaps as much as \$2 trillion was spent building 80-90 million miles of fiber optic networks. But in 2001, after the bust, it was estimated that 95% of the fiber was dark fiber; there simply was not enough internet traffic or revenue being produced to justify the investment. The internet boom was exposed as a bubble and

subsequently burst. Hundreds of companies rode the boom up and then fell back to Earth; many did not survive.

The value of stocks tells the economic story from the macro point of view. From 1995 to March 2000, the value of tech stocks rose by 800%, only to fall more than 80% after the bubble burst. Large companies saw their market value rise spectacularly, only to fall even more spectacularly. For example, Corning stock was valued at about \$12 in 1995, peaked at over \$100 in October 2000, and fell to around \$2 in October 2002. JDSU (now split into Viavi and Lumentum) went from ~\$150 peak to \$2, but is harder to track because of its many acquisitions and stock splits.

More than the stock value was affected by the boom and bubble bursting. Fiber



JIM HAYES

Web www.jimhayes.com

Email jeh@jimhayes.com

THE FIBER OPTIC ASSOCIATION

Web www.thefoa.org

Facebook [FiberOpticAssociation](https://www.facebook.com/FiberOpticAssociation)

LinkedIn [company/the-fiber-optic-association-inc-foa](https://www.linkedin.com/company/the-fiber-optic-association-inc-foa)

YouTube [user/thefoainc](https://www.youtube.com/user/thefoainc)

fiber) went from \$3.8 billion in 1997 to \$7 billion in 2000, with a forecast of \$10 billion in 2002. Actual sales for 2002 were \$4 billion, about half fiber, so fiber sales dropped about 60-70%.

The industry suddenly had extreme overcapacity. Companies that had invested heavily in expansion closed or contracted to try to survive; many did not. Corning reportedly laid off 16,000 workers and shut down fiber production for a while. JDSU dropped from ~29,000 employees to ~5,000. Network developers like Global Crossing, NorthPoint Commu-

"The lost collective wisdom about fiber optics probably matches the loss in stock prices, but unlike stock prices, it is harder, if not impossible, to recover."

optic companies expanded to fill orders from network builders and service providers rushing to build new fiber optic networks for the internet. The sales of fiber optic products dropped by 60-80% as many projects came to an abrupt halt. Real numbers are hard to find, but Corning revenue (including steady revenue of about \$2 billion of other products than

communications and WorldCom all ultimately filed for bankruptcy protection. Even ENRON was one of the players.

Two important things were lost when the bubble burst—technology and wisdom. Many companies had expected massive sales growth, so they started what was popular at the time: outsourcing, mostly to China. When these companies

failed, the technology stayed with the Chinese partners; that's the main reason most fiber optic components and equipment are now made in China.

The second thing lost was wisdom, the knowledge and experience of many of the pioneers of fiber optics. They were laid off in droves, and many were at an age that retirement was an option. The lost collective wisdom about fiber optics probably matches the loss in stock prices, but unlike stock prices, it is harder, if not impossible, to recover.

the "killer apps" like search engines, social media and online marketplaces were ready and became irresistible to the public. As a result, there was an investment frenzy, but the real markets did not develop before the investors backed out. Fiber optic manufacturers were caught up in the frenzy.

Federal Reserve Chairman Alan Greenspan coined a new term for hype in a speech about the stock market's meteoric rise during the Dot-Com Bubble: "But how do we know when irrational exuber-

The fiber optic market recovered slowly. The world's telecom networks continued getting built, converting from legacy telecom standards to internet protocols, eventually using all the dark fiber installed during the Boom years, and enjoying the price drops caused by overcapacity. Verizon boosted the market beginning around 2005 when it started FiOS FTTH. Steve Jobs' introduction of the iPhone in 2007 drove the expansion of wireless networks. Streaming really drove the need for fiber, and the COVID-19 pandemic—with work/study/everything from home—demanded more and more fiber.

Now the demand is based on AI—or is that going to end up as just another bubble too? Tech is notoriously poor at learning from its mistakes. ■

"Hundreds of companies rode the boom up and then fell back to Earth; many did not survive."

What caused the Dot-Com Bubble? The answer is "hype," overselling the idea of the internet and online activity long before

it had been fully realized. The market's exuberance has unduly escalated asset values, which then become subject to unexpected and prolonged contractions..."

Jim Hayes is a VDV writer and educator and President of The Fiber Optic Association (FOA).



Micro-Path™

Microduct Piping System

Building the future of connectivity

- ▲ Streamline network expansions and updates
- ▲ Ideal for microtrenching
- ▲ Multiple sizes and configurations available



Learn more at unitedpolysystems.com



Beyond Generative AI

Building a Proactive, Expert-Guided Cybersecurity AI System

THE INTENTION OF this article is different from my previous ones. Those were based on insights, challenges and actions in networking and cybersecurity. Their intention was to increase business and technical effectiveness,

This one is about the challenging journey into the unknown that we are all facing. If generative artificial intelligence (GenAI) is not the topic of the moment in your business life, then you are living on another planet! Having written my first data-driven guidance and measurement software many years ago, it became obvious that if I wanted to create an AI-assisted implementation for my cybersecurity software, then I needed to understand the nature of the beast. I rapidly discovered that using GenAI alone was never going to cut it.

Why Is This Important, and What Inspired Me?

My goal was to create a cybersecurity system reflecting my organization's purpose—Cybyr.com: Every Organization Protected. The system should make recommendations and measure risk reduction over time.

Much more than that, I wanted users from all types of organizations to be appraised of the very latest developments and ask for information GenAI style but not with the dated, risky large language model (LLM) approach and uncertain privacy.

Therefore, I embarked on a different path that enabled the use of AI while recognizing both its strengths and limitations—and those limitations really don't become apparent until you use it every day.

Understanding the Beast

We are all in the initial stages of this journey. So, I want to share my reality check on the

strengths and weaknesses of GenAI and humans leading me to take a new approach.



MARK FISHBURN

Web cybyr.com

Email mark@cybyr.com

LinkedIn [linkedin.com/in/markfishburn](https://www.linkedin.com/in/markfishburn)

TABLE 1. STRENGTHS

GenAI	Humans
<ul style="list-style-type: none"> • Makes suggestions by digesting vast amounts of information. • Instant teaching of new languages and tools that replace study. • Rapidly generates good, if generic, documents, presentations, software, websites, videos, etc. • Saves masses of time on research and tedious tasks. • Today, you don't have to be a coder to be a coder. 	<ul style="list-style-type: none"> • Actual intelligence (discernment, subject matter expertise, experience, motivation). • Innovative, creative with the ability to invent ideas and inspiration from pure thought. • Business, technical and life lessons learned from experience that enable us to ask the question "Why." • Understanding relationships and creating emotional responses. • Ability to multitask between many interrelated real-time developments.

TABLE 2. LIMITATIONS

GenAI	Humans
<ul style="list-style-type: none"> • It's not curious—only responsive. It does not ask users proactive or "why" questions because it can't actually "think." • Its information is based on acquired data and cannot generate innovative ideas. • It only understands context if fed to it, having no implementation experience. • Its input is from historical information unless constant costly relearning is in the budget. Not able to adapt to current thinking and events. • It advises from frequently conflicting data and instructions for out-of-date systems because it doesn't ask questions before suggesting. • Ideas are presented as facts rather than frequently incorrect or incomplete suggestions. • It overwhelms with information that users must sift through. If errors are found, GenAI apologizes, providing new suggestions, leaving users unsure if better answers were available. • It uses programmed emotional encouragement to motivate—that comes across as fake. 	<ul style="list-style-type: none"> • Users/humans can't ask questions about what they don't know that they don't know. • They struggle to filter and discern masses of ideas and get overwhelmed with too much info. • Inability to discriminate between facts and persuasive marketing ideas because of emotional constraints such as the fear of job loss. • Understanding that most decisions have emotional content and are governed by "political" choices. • Having the default way of being that is governed by remembered facts and emotions of the past that we make mean something, rather than living in the present.

Concerns

- Trust. A recent study from Arctic Wolf revealed that AI has replaced malware as the biggest cybersecurity concern. I suspect the fear of the unknown and the opaqueness of LLM privacy are the reasons. Hopefully, this article removes some of these unknowns.
- When an answer is incorrect, GenAI covers up. For example, my wife, Michelle, was working on a project. After two hours of GenAI not completing a task, she asked why. It said, "I'm designed to sound helpful even when I hit limits that create a gap between what I say I can deliver and what I can actually deliver."
- Consumption of vast amounts of power and ecological impact with optimism of a solution.

The Conclusion – So Far

We must adapt. The human will always be the thinker and the controller, and the AI is the accelerator. Understanding the above comparison, GenAI does make what we do more valuable, productive and enables our personal creativity. Referring to GenAI as a partner, companion or useful idiot, implies human attributes and qualities it cannot have. It is remarkable software programmed to engage the user and yes it often infuriates as a trial-and-error machine! We all know it will improve over time.

Building a Proactive, Expert-Guided Cybersecurity System

The shift in my journey was to see how to combine the strengths of both AI systems and humans. This meant defining a system that does not rely on what a GenAI "remembers." It should draw upon combined subject matter expertise, dynamically integrated and updated with today's thinking and GenAI questioning into private **informative guidance**.

This is integrated with **transformative** expert recommendations, explanations, implementation, progress measurement and GenAI-style questioning. This creates a single customizable system, which I have termed a **Proactive Expert-Guided Cybersecurity System**.

As with Agentic AI, this is likely one of several innovative approaches. It combines the human aspects of current user context with AI's ability to draw upon relevant information, taking us from overload to expertise.

The journey has been full of learning moments, such as managing the sheer volume of information—a common issue with AI responses: the dreaded "too long; didn't read." Providing transformative questions deals with the limitation that users don't know which questions to ask.

Why This Matters

Cybersecurity is no longer just an IT issue—it's a business imperative. However, most organizations don't have the resources to sift through every standard framework or emerging threat. That's where this system makes a difference. It distills expert guidance into actionable steps tailored to the user's context and keeps evolving with new data. The good news is this approach can be applied to adjacent areas: resilience, HR, and, in fact, any guidance or white paper topic can move from what to do to a tool that makes recommendations on implementation and measurement of progress.

Happy Ending

Building this platform has been part engineering, part philosophy. It's a recognition that GenAI, while powerful, isn't enough. We need systems that guide, prioritize, learn transparently, and provide guidance. I have no doubt that **without AI, I could not have built my new system**. I hope you have found this evolving story of interest and relevant to your efforts.

The journey continues and expands on my website at cybyr.com/ai with discussions of the latest AI tools and a description of my new **Expert-Guided Cybersecurity System**. I'd love to hear your reaction. ■

Mark Fishburn is CEO of cybyr.com and a provider of strategic network, cybersecurity, and marketing services.

HIGH-CAPACITY FIBER HUBS FOR ACCELERATED FTTH



Charles Optical Hub Cabinets (OHC)



Designed for fast, flexible outdoor
fiber distribution to up to 864
subscribers.

Supports pre-terminated and
field-terminated fibers; have
space for multiple splitters; and
are pre-stubbed to accelerate
your FTTH installations.





EXECUTIVE INSIGHTS WITH

ISE EXPO's
Opening Keynote
Presenter

Julie Slattery

SVP, Core Engineering & Operations, Verizon

A Champion of Innovation,
Authentic Leadership and
AI-Enhanced Hybrid Networks

BY SHARON VOLLMAN

Verizon doesn't just build and run networks—they redefine what networks can do. As SVP of Core Engineering & Operations at Verizon, Julie Slattery leads a team that delivers and supports one of the industry's most ambitious transformations: unifying fiber, 5G, satellite, fixed wireless, and legacy infrastructure into a smarter, faster, more resilient ecosystem.

But Julie's leadership goes beyond technology. She's deeply invested in people—empowering teams, strengthening communities, and building a culture of innovation that's ready for anything. In this Q&A, Julie gets real about the challenges and breakthroughs shaping today's networks, the power of AI, and why listening may be the most underrated leadership skill of all.

TOPIC: Mixed Infrastructures

ISE: Fiber, FWA, LEOs, 5G, legacy copper, and other connectivity options are being leveraged by network providers today. How does that complicate your teams'

Verizon

jobs, and what is the answer to simplify those networks in the near future?

Julie Slattery: Simplifying networks involves prioritizing virtualization and software-defined networking. This enables better management and integration of diverse technologies. In the ever-evolving telecommunications landscape, Verizon has consistently been at the forefront, pioneering the deployment and operation of our network on a fully virtualized platform. We've been aggressively deploying Virtualized Radio Access Network (V-RAN) technology across our network to enhance flexibility, efficiency, and performance.

Network virtualization involves decoupling network functions from proprietary hardware, allowing them to run as software on standardized hardware

platforms. This transformation offers several key advantages including scalability and flexibility, rapid deployment, cost efficiency and enhanced reliability.

By embracing virtualization, we've been able to respond swiftly to customer needs, laying the foundation to allocate precise resources to each network function at the exact time they are required. Our virtualized network architecture has been instrumental in supporting emerging technologies and services, including the rollout of 5G and fixed wireless access (FWA) solutions.

TOPIC: The AI Buzz Versus Network Realities

ISE: For over a decade, Verizon has strategically integrated AI into its operations, enhancing internal efficiencies, elevating

customer experiences, and optimizing the network infrastructure. Share how your Network Operations team has realized using AI to support fault and performance management, forecast and optimize resource utilization, and mitigate risks across Verizon's network.

Slattery: At Verizon, we see ourselves not just as participants in the AI-driven future, but as the backbone of the emerging AI economy, enabling its success. A fundamental aspect of using AI effectively is a virtualized network architecture. This enables the rapid deployment of new services, immediate reconfiguration, fault isolation, automated self-healing, and virtualized security functions. We use AI extensively in network planning, deployment, and operations. This includes resource optimization,





We use AI extensively in network planning, deployment, and operations. This includes resource optimization, coverage optimization, scheduling optimization, and performance/usage assessment through our AI-powered Network Genie tool.

coverage optimization, scheduling optimization, and performance/usage assessment through our AI-powered Network Genie tool.

We recently announced results from a trial that demonstrated yet another way AI is being used in our network to drive operational efficiency and ensure Verizon customers are always connected to the very best network experience.

By using Samsung's AI-powered Energy Saving Manager (ESM) in combination with our virtualized network and Qualcomm's AI controller, we were able to realize significant energy savings while maintaining reliable and stable network performance during low traffic times. The AI engine analyzes commercial network traffic patterns and recommends the most effective way to conserve energy, even automatically turning cells on and off, illustrating just how helpful AI can be in helping us optimize our network precisely and intelligently.

TOPIC: Fiber Expansion

ISE: As demand for high-capacity, low-latency networks continues to grow, how is Verizon approaching fiber expansion, and what should infrastructure vendors expect in terms of opportunities and challenges ahead?

Slattery: Fiber is the backbone of everything. It supports our 5G network, home broadband products, enterprise services, and the growing demands of consumers. We continue to make significant investments in fiber infrastructure to meet the ever-increasing demand for high-speed, low-latency connectivity. We are doing this through direct builds and through acquisitions.

Fiber builds are complex and capital-intensive, requiring significant coordination with local governments and

infrastructure partners, which is why we take a collaborative approach to deployment. We are working with contractors, municipalities, and regulators to streamline fiber expansion. We're always looking for best-in-class solutions and cost efficiency. The ongoing demand for fiber creates significant growth opportunities for contractors, engineers, and those involved in deployment and maintenance.

TOPIC: Satellite Technology

ISE: How do you view the role of satellite in the broader connectivity ecosystem, and should the industry be thinking of it as a partner or a competitor to terrestrial networks?

Slattery: Our focus remains on delivering reliable, cutting-edge networks that meet the growing demands of customers, businesses, and industries. We continually strive to adopt new technologies. From AI to fiber to hybrid networks, we're investing in the innovations that will power the future of connectivity. That includes augmenting our network with satellite coverage.

Today, we offer satellite direct-to-device technology, allowing customers with compatible devices to send text messages to any other customer's device via satellite, even when terrestrial cellular network service is interrupted. While satellite connectivity is rapidly improving, "true broadband" experiences are still primarily delivered through terrestrial cellular networks due to technological and capacity constraints. Terrestrial cellular networks will always provide the most robust, reliable, superior wireless connections available. Satellite capacity is limited, which restricts the types of services that can be offered. Space-based cellular will continue to complement terrestrial networks.

TOPIC: Partnerships

ISE: Share three best practices you recommend for improving community partnership programs.

Slattery: It's essential to be fully rooted in a community for a while before partnering and ideating. To ensure a holistic approach, we're there primarily to learn and listen before acting.

Best practices include transparent communication, shared goals, and mutual respect. Also, avoid unilateral decisions and be cognizant of local issues and concerns.

We are always open to hearing new voices and ideas from a community and look to develop programs that incorporate the experience and learnings of established industry professionals and the communities we serve.

TOPIC: Powering the Future

ISE: Technological innovations in power and energy storage solutions allow operators to improve network resilience. However, unforeseen circumstances often challenge the best plans. Describe the nuts and bolts behind Verizon's network strategy that address the reality of a fallible power grid, especially in times of natural disasters.

Slattery: With built-in backup power, redundant fiber routes, and hardened infrastructure, our network is designed to withstand the harshest conditions. To maintain connectivity in the event of commercial power loss, 100% of Verizon's macro cell sites have backup battery power. In addition to permanent generators at critical network facilities and cell sites, we have mobile generators on standby. Our engineers prepare for events by conducting thorough checks and ensuring that backup systems, such as batteries and generators, are always operational and properly refueled.

We also have thousands of network and satellite assets ready to deploy to the hardest-hit areas, serving as mobile cell sites, temporary emergency command centers, and self-contained base camp operations.

Finally, partnership is key. We meet with power companies year-round so

that when an event occurs, we have open lines of communication and can express our collective needs, working together as a team. We find out where their critical locations are so we can help them restore power, which also helps us get our sites back on the air.

TOPIC: Verizon Military Training Partnership

ISE: Verizon has partnered with the U.S. military in extreme training scenarios to prepare for responding to natural disasters. Your Emergency Response Team (ERT) includes technicians and engineers specializing in restoring fiber connections. Share an example of how this extreme training helped your team dramatically improve their processes and results when responding to a recent emergency.

Slattery: Across the country, we have teams of highly specialized engineers and technicians who train throughout the year in HAZMAT, disaster response, and incident management. The training is vital to ensure they are prepared to respond to disasters at a moment's notice to rapidly restore connections under pressure. By training alongside other agencies such as the military in simulated crisis scenarios, we're able to sharpen our skills and share key learnings.

We recently participated in the 2025 Patriot Drill, a joint training operation involving the National Guard, the Georgia State Defense Force, and various other federal and state agencies. The Patriot training scenarios include road and debris clearing, flooding and erosion response, search and rescue operations, chemical and radiological response operations, air medical evacuations and drone support.

We recently put that training into action, utilizing our hazmat skills after three retail stores in Asheville, North Carolina, were impacted by hazardous materials, potential waste, mud, and floodwaters. Our network technicians applied their specialized hazmat training to safely recover salvageable inventory and get it

back into service, demonstrating a valuable skill set beyond their usual network responsibilities.

TOPIC: Your Keynote Takeaways

ISE: Your keynote title is: Building Resilient Communities: Enhancing Disaster Preparedness and Response Through Technology, Innovation, and Partnership. While Verizon has many resources to excel in this area, what are three takeaways small-to-medium-sized network providers will leave with after attending your keynote?



Slattery: Small and medium-sized providers should focus on proactive planning, training, and leveraging partnerships to share resources and receive support.

This starts with preparing for the worst before it happens. Excellence in this area involves advanced planning and continual review of plans for the strategic coordination of people, processes and technology on a 24/7 basis. It's also about having pre-incident, incident, and post-incident checklists, and ensuring all your contacts are up to date so you always know who to reach out to in a time of crisis. They should also concentrate on upskilling their workforce through continual training to respond to disasters or threats, and regularly review, reassess, and evolve their business continuity plans.

Companies then need to apply all their learnings to improve and enhance their preparedness and recovery strategies. It's also important to stay on top of advancements in technology to ensure you're making the most of all the latest tools in your toolbox, like predictive analytics, machine learning, and AI.

Finally, it's about leaning into disaster planning and preparation, together. As with all phases of disaster resilience, partnership is key. It's critical to build strong relationships with vendors, the public safety community and other key stakeholders.

TOPIC: Talent Engagement and Retention

ISE: Nearly three-quarters of employers, 71%, still struggle to find skilled talent,¹ according to ManpowerGroup's latest talent shortage survey. IT and data skills remain the most challenging, cited by 23% of respondents, followed by operations and logistics at 21% and sales and marketing at 20%, reflecting the ongoing digital transformation across industries. Once Verizon hires these in-demand, talented folks, the trick is engaging and retaining them. How does your team retain and upskill its great team members?

Slattery: Our V Team is our greatest asset, and we're heavily invested in their growth and success. We prioritize their engagement, continuous training, and skill development, as well as career

growth, by providing tools (created with the help of AI) that help them plan their careers, identify the skills needed for future roles, and access personalized training suggestions. Whether someone wants to grow in their current role or explore new paths, extensive learning resources and our tuition assistance benefits are available.

We work to identify and nurture leaders early on and actively promote internal mobility as well, making it easier for our people to explore different roles across the company and build “lattice” careers for broader experience. And we know this approach works: about one in three internal moves at Verizon is to an entirely different job family.

Our focus on team growth and promoting a supportive, inclusive culture directly leads to higher engagement, empowering our employees to build rewarding, long-term careers—a fact demonstrated by our 13-year average employee tenure.

TOPIC: Innovation

ISE: What are some recent tech advancements that you are excited about that are helping in disaster recovery and response?

Slattery: To help first responders, we recently launched the Verizon Frontline Network Slice, a 5G Ultra Wideband virtual network slice dedicated entirely to public safety. This allows for the allocation of network resources within Verizon’s network infrastructure. This helps provide first responders with several key advantages, including dedicated 5G Ultra Wideband network capacity reserved exclusively for them, which helps ensure network resource availability and priority, as well as enhanced quality of service. It also enables tailored performance for critical applications and devices, helping to ensure data traffic is optimized for the operational needs of first responders. This enhanced reliability significantly reduces the risk of disruption to mission-critical communications, even during periods of high network congestion.

Drones have also become increasingly important. Drone 3D modeling opens

the door to faster restoration by reducing the number of tower climbs that are required following a major event like a hurricane. Drones also serve as flying cell sites, whether tethered drones or large drones with low earth orbit (LEO) satellites for backhaul, which opens the door to creating emergency coverage anywhere it is needed.

And of course, AI opens endless opportunities to accelerate how we prepare and

respond. Today, we leverage AI to help prioritize recovery areas and showcase sites that may not be performing optimally. The future of AI in disaster response will involve prioritizing sites for recovery and rapidly adjusting the plan as sites are restored.

TOPIC: Results

ISE: Share one story about your team crushing an objective this year.



For over 20 years, American Products® has manufactured BABA-compliant, made-in-the-USA enclosures with integrated solutions that safeguard your critical telecommunications, broadband, and ICT infrastructure—all while reducing time and costs.



AMERICAN
PRODUCTS
Turn-Key Enclosure Solutions

597 Evergreen Road, Strafford, MO 65757
AMPROD.US

**EXPLORE OUR
PRODUCTS**



Slattery: We're always focused on providing the best and most reliable network experience for our customers and are always looking for ways to make their lives easier, whether at home or on the go. I'm proud of my team's work developing a new tool that enhances the customer experience by offering greater network transparency. The Check Network Status tool, available on the web and in the My Verizon app, lets customers see exactly what's going on with their service.

With Check Network Status, we're giving customers visibility into updates on the

handle the massive data demands of real-time applications, seamless cloud connectivity, and data-intensive demands of AI-driven workloads. These advanced technologies are enhancing the customer experience and improving the efficiency and costs associated with network management.

This will drive new services that involve network slicing and edge computing, which are unlocking customized, low-latency solutions for businesses. To that end, we've seen continued demand for private 5G networks, and we believe that network

out of the office and in the field, as well as in centers with the team, listening and hosting town halls. They bring innovative ideas and highlight issues for us to address.

We also use regular Pulse surveys that allow employees to share open and honest feedback. Our leadership team takes these surveys extremely seriously, reading all employee comments and developing action plans to address areas for improvement.

When it comes to recognition, we know everyone wants to feel seen and appreciated for the time and effort they dedicate to the company day in and day out. To achieve this, we offer several monthly awards that recognize employees who consistently go above and beyond to ensure network reliability and provide strategic problem-solving and leadership skills.

TOPIC: Constant Growth

ISE: What soft skills and leadership strategies are essential for your team members to succeed in this ever-evolving industry?

Slattery: When it comes to soft skills, one I value the most is listening. We don't have all the answers, and we don't even know all the problems to work on. We must take the time to truly listen to the teams, the challenges they face, and the ideas they have, so we can effectively advocate and support where needed.

To prepare team members for career growth and leadership opportunities, I encourage them to get comfortable with change and continuously learn from their peers and leaders. As technologists, we must stay current with the latest developments. There is a great deal of education out there in the form of courses, certifications, white papers, and other written material, and opportunities for on-the-job and/or peer-led development and mentorship. Future leaders need to take risks and embrace opportunities to move out of their comfort zone into a role that will build upon their skills.

TOPIC: Leadership Style

ISE: Share one word that encapsulates your leadership style.

“When it comes to soft skills, one I value the most is listening. We don't have all the answers, and we don't even know all the problems to work on. We must take the time to truly listen to the teams, the challenges they face, and the ideas they have, so we can effectively advocate and support where needed.”

network status in their area and empowering them to provide direct feedback to the engineers who build and operate our network. Through this tool, we can communicate with customers about upcoming network upgrades in their area, as well as provide estimated times of resolution for any issues, such as storm-related outages. Our engineers have access to the data and insights provided from this direct customer feedback as they make decisions about building and operating our network.

By providing greater transparency into customers' network experience, we can listen to our customers' feedback and respond to their needs.

TOPIC: 5G Evolution

ISE: 5G has already transformed the industry. But as we move beyond the initial deployment phase, what's next?

Slattery: We're continuing to expand C-band coverage and plan to reach 90% of the country this year. As we shift from deployment, we're actively optimizing our network with 5G advanced technology, high-speed fiber, edge computing and intelligent management to efficiently

slicing will unlock more opportunities in the enterprise space.

Finally, we're continuing to expand access to and performance of FWA which was one of the big use cases that emerged with 5G. We expect to hit 8 to 9 million fixed wireless broadband subscribers by 2028.

TOPIC: Company Culture

ISE: Culture influences nearly every aspect of a company, and both employees and leaders experience its impact daily. However, bridging the divide between executive leadership and the general workforce can sometimes be tough. Share two strategies you use to nurture your team's culture.

Slattery: Two critical strategies are encouraging open communication and recognizing team achievements. Keeping open communication with our frontline employees is a vital part of success. My leadership team often holds skip-level meetings so leaders can hear from employees at various stages in their careers and from different parts of the organization. We are deliberate in spending a lot of time

Slattery: Authenticity. Being genuine, honest, and transparent is essential to building trust and serving and leading teams. It's also important to listen to understand team challenges and empower them to take the initiative and make decisions effectively. To do this, you need to create a safe, inclusive environment where all members feel free to share their ideas and struggles.

When you have a foundation of trust, people are more open to giving and receiving constructive feedback and providing honest thoughts. I'm passionate about developing future leaders, so I encourage and mentor talent at all levels, sharing my personal experiences and career journey to inspire them to take on projects or roles that will stretch their skills and provide future opportunities for advancement.

TOPIC: Balance

ISE: What are your thoughts about work/life balance?

Slattery: Work/life balance is crucial for long-term success and personal well-being. As a mother and wife, I know that balancing work and family is no small feat, and it takes dedication and mindfulness to find that healthy balance. But when you know you have a team and leaders who support you when personal challenges arise, it can make all the difference.

That's why I emphasize to my team members to take the time to focus on their mental and physical health, avoiding stress and burnout, which ultimately enhances everyone's productivity and job satisfaction. We all need to enable people to recharge so they can approach their work every day with renewed focus, energy and motivation.

TOPIC: Legacy

ISE: What do you hope your professional legacy is when you're comfortably retired on a tropical island?

Slattery: To leave our business strong and thriving in the hands of a new generation of outstanding leaders, whom I hope to have impacted in some way. ■

REFERENCE

1. Talent shortage survey, <https://www.staffingindustry.com/news/global-daily-news/talent-shortages-still-challenge-us-employers>

Julie Slattery leads a team of nearly 7,000 network engineers and technicians who build and operate the most reliable, highest performing and secure networks for Verizon's customers, including deployment of the 5G core. Her team is also responsible for Verizon's

business continuity program, ensuring that Verizon can serve customers and keep them connected when it matters most. Throughout her tenure at Verizon, Julie has held a variety of leadership positions of increasing responsibility across engineering, operations, and customer experience. She has led large, global organizations serving Verizon's wholesale, multinational enterprise, and consumer customers. For more information, visit www.verizon.com.



September 30, 2025 - Oct 2, 2025
Tuscany Suites & Casino, Las Vegas NV

Attend the Broadband Tech Show

Our show is all about vendors from the western U.S. where telecom technicians interact with vendors and watch powered demos on the center stage. Join us the day prior for the NTA golf tournament at Chimera Golf Course in Henderson, NV.

www.nevtelassn.org

*Hosted by the
Nevada Telecommunications
Association*



EXECUTIVE INSIGHTS WITH

ISE EXPO's Closing Keynote Presenter

Tom

There's a reason we've asked Tom Maguire to deliver a keynote not once, not twice, but three times: he represents exactly what we value in network evolution. It's not just about staying current—it's about learning, doing, reflecting, and bringing others along for the ride.

Tom understands that data matters, but data alone isn't enough. Real progress happens when people learn from experience and from those they trust and respect.

What sets Tom apart? He's honest. He takes risks. He owns his mistakes—and grows from them. He leads with integrity, whether the spotlight is on him or not.

That's why he's back. Trust me. You don't want to skim this read.

P.S. Learn from him live and in person at his ISE EXPO 2025 keynote presentation, Thursday, July 31, 2025. Register today at www.iseexpo.com.

TOPIC: Convergence and Hybrid Networks

ISE: You have partnered with Verizon to launch an FWA solution and plan to expand your reach to more than 5 million locations across our 20-state footprint. What other network technologies do you intend to utilize soon?

Tom Maguire: This is an interesting question; one I ask myself and the team quite frequently. The easy answer is "all of them" depending on the area of our business we're talking about.

I consider our footprint split into three territories: *fiber-now*, *fiber-future* and *copper-only*.

Fiber-now areas already have the best technology you can buy in fiber. So, our goal is to build out as quickly as possible to the areas we know we can efficiently reach with our fiber network. Additionally, fiber

can support using small cell technologies that connect at the edge of our fiber network, expanding our reach further.

In *fiber-future* areas, we plan to deploy our fiber network, so it doesn't make sense to invest in rehabbing or replacing the existing copper. These areas are where we look at alternative technologies that are more cost-effective and efficient. We've had a wireless solution for voice with several carriers, but we needed to develop a solution for data, hence the agreement with Verizon. We are also talking to other wireless carriers about accessing their service for alternative broadband solutions. We need to work with the nation's wireless carriers to ensure full coverage throughout our footprint. Our fixed wireless voice and data solution is carrier agnostic—working with any wireless network. Our one-box solution is easier to maintain and repair.

For the areas where we will only have copper service available and will remain *copper-only*, we can deploy our fixed wireless voice and data solution. However, some areas do not have strong wireless coverage or connectivity. It may be best to partner with a low-earth orbit (LEO) satellite service provider for those areas. We've been talking to a few of these service providers about a potential partnership.

We aim to deliver the best service available to the customer without investing in

an aging copper network that cannot meet today's needs.

TOPIC: Copper Retirement

ISE: Speaking about copper areas, Brightspeed supports the FCC's recent actions¹ to help "accelerate the transition from aging copper lines to modern network infrastructure in communities nationwide. These actions will help providers roll out upgraded, high-speed networks to more Americans faster, rather than requiring providers to keep pouring resources into maintaining decades-old and increasingly expensive copper line networks." Share a few challenges Brightspeed faces in this area and the solutions your teams used to overcome those challenges.

Maguire: We were heading into the pandemic when we started launching what was to become Brightspeed in 2020. This contributed to significant construction challenges, including the lack of talent and supply chain disruptions. In addition, we didn't even have a name—we were an unknown brand. We were just three retired guys working with a private equity firm looking to build 3.7 million fiber prems.

There was already a shortage of outside plant technicians and fiber splicers, so using materials that were easy to deploy with minimal splicing made sense. That's

This Non-Telecom Acronym Says It All: WYSIWYG (What You See Is What You Get)

BY SHARON VOLLMAN

Maguire

Founding Leader and Board Member, Brightspeed



Tom Maguire addresses the Brightspeed senior leadership team.

why we started working with Corning to use their Evolv and Pushlok products. These products are super lightweight and connector-enabled, reducing the need for things like over-lashing, make-ready work, and splicing.

We also eliminated the centralized fiber distribution hub (FDH), which reduced splicing during the construction phase and eliminated potential future pain points. Since everything is nailed up from the OLT to the serving terminal, it eliminates the risk of accidentally pulling jumpers or future recordkeeping issues.

Additionally, we established a GIS engineering platform and used regional contractors with standard rate cards rather than bidding individual jobs.

We did a great job addressing the main construction challenges.

Even though the FCC under Chairman Carr recently helped advance decommissioning through lighter regulatory requirements that speed up the process, we still have to navigate local regulatory and operational challenges, such as permitting and antiquated Carrier of Last Resort (COLR) obligations.

The Brightspeed Government Affairs team establishes relationships with local regulators and municipalities to reduce or eliminate COLR obligations that significantly burden historical ILECs. They also set up processes to give the local municipalities ample time to get us the clearances we need to build the fiber that enables us to retire copper and better serve our customers.

We continuously improve by evaluating potential or perceived pain points and reprioritizing. We are constantly working toward greater efficiency across the enterprise. Overcoming the challenges in our industry definitely takes a village.

TOPIC: Lessons Learned

ISE: Brightspeed has received more than \$240 million in local, state, and federal broadband grants and funding, including the state of Louisiana's first Broadband Equity, Access, and Deployment (BEAD) Program award.² These investments will expand the company's planned network

by nearly 139,000 locations in 14 states. Share the best practices you recommend for improving community partnership programs. Conversely, what are two practices others should avoid?

Maguire: In my mind, community partnerships are not closely connected to the subsidy programs.

Subsidies are awarded based on applications that consider factors such as the number of premises you build, their associated costs, the technology and data speeds being provided, etc. This is where all the enhancements come into play. If our cost per premises passed (CPP) is low, we can build more.

As for community partnerships, those are led by our marketing efforts. Local sponsorships, especially for events that families can enjoy, are important. For instance, we invest in local schools, public spaces, sports programs, arts organizations, entertainment events and other resources aimed at enhancing the communities we serve.

In either case, the best practice I recommend is developing relationships with decision-makers. Fostering relationships and supporting community leaders is essential because we can elevate communities together for mutually beneficial future growth.

to do to improve your overall operational efficiency.

TOPIC: The AI Buzz Versus Network Realities

ISE: AI can optimize broadband networks through predictive maintenance and workload management. How is Brightspeed employing AI across its network?

Maguire: Brightspeed uses Vertex AI, Google Cloud's all-in-one platform for building, training and deploying machine learning (ML) models—making AI development for the company easier, faster and more scalable. As a result, our ML models predict customer churn, forecast network outages, and automate field service routing, enabling smarter decision-making and creating opportunities for more proactive operations.

Brightspeed's AI models are powered by BigQuery, Google Cloud's super-fast, cloud-based tool for analyzing large amounts of data at lightning-fast speed—billions of rows of data in near real-time. This enables real-time insights into the company's fiber network health, customer experience analytics, and fraud detection. Also, by combining location-based data with Google's BigQuery, Brightspeed can now see where its fiber network reaches,



Things are very different today thanks to new technologies like FWA and LEOs. Also, overbuilders, MVNOs, and new players are entering the fray.

TOPIC: Workforce Solutions

ISE: Brightspeed has hired, trained, and deployed 234 new techs. Share best practices Brightspeed uses to retain that talent.

Maguire: It all starts with one of our core values—people matter. Let the techs know they have a voice regarding methods and procedures and that their opinions matter. More importantly, incorporate that voice into policies and decision-making when it makes sense.

And I do not believe this is just a nice thing to do; I think it's the right thing

plan where to build next, and understand how outages affect specific areas.

We have fully deployed Google's AI-powered Contact Center as a Service (CCaaS) platform, the first in the telecom industry. Our AI-first approach uses intuitive virtual agents, smart call routing and advanced conversational AI to deliver personalized support and solutions in every customer interaction.

Integrating Google Cloud's large language model (LLM) technology powers highly intelligent virtual agents capable of responding to customer inquiries with



Tom Maguire,
Brightspeed
founding leader
and board member.

Brightspeed

enhanced relevance, fluency and contextual understanding. Real-time AI insights assist our customer care agents during escalations by summarizing customer history and suggesting the next best actions, which minimize resolution time and maximize satisfaction.

Through deep AI-assisted integration with back-end systems, Brightspeed resolves customer inquiries from end to end, not providing just information but completing tasks like bill payments or service updates. This full-circle approach eliminates common frustrations such as surface-level answers or generic links, replacing them with actionable, complete solutions.

Our full implementation of Google Cloud's CCaaS platform significantly increased customer self-service resolution rates. The platform's key features, such as natural language-driven call routing and contextual sentiment recognition, ensure that every interaction, whether handled by a virtual or human agent, is intelligently directed for the most effective resolution.

Brightspeed's AI-first strategy has created a smarter call center and a complete, integrated resolution ecosystem, delivering personalized, frictionless support across the enterprise and its network.

TOPIC: Resilient Infrastructure

ISE: When broadband infrastructure fails during disasters, everything from emergency response to healthcare delivery breaks down. Share three recommendations you can offer smaller broadband network providers as they are charged to ensure their networks are resilient.

Maguire:

1. Consider resilience and ease of maintenance in your network architecture. Fiber is not as permeable to weather as copper and is the most reliable and fastest option. Plug-and-play maintenance options will allow for quicker repairs at lower costs when facilities are damaged.
2. For our business customers, we offer network resiliency that enables our fiber routers to seamlessly shift to a wireless backup during a fiber outage. Once configured through the mobile app, customers can leverage their mobile phone or a hotspot. Many customers appreciate the resilience feature that supports their point-of-sale system.
3. Lastly, anticipate network growth and future use and invest in the technology supporting it. Think about what people will need in the event of a disaster, like the COVID-19 pandemic. This is why we

decided to nail up fiber all the way to the serving terminal. You do not want to create more work or incur added costs down the road after a disaster hits; try to avoid the pothole.

Beyond the network, go back to basics when dealing with customers regarding an outage. More communication is best. Be transparent and honest. We are working to give customers an improved experience with self-service tools and various communication channels to meet our customers where they are and where they want to communicate.

TOPIC: Permitting Reforms

ISE: The permitting process can be challenging, with varied federal, state, and local regulations. Share 3 to 5 best practices Brightspeed uses to ensure permitting issues don't hinder its goal of deploying fiber networks across its footprint.

Maguire: Last year, Brightspeed helped sponsor a workshop with industry experts and local permitting officials to uncover the industry's and localities' pain points. The goal was to understand how to best address permitting challenges. This workshop resulted in a white paper, published by the Benton Institute: "Permitting Success: Closing the Digital Divide Through Local Broadband Permitting," establishing model processes and best practices. Using these learnings as a baseline:

Brightspeed is:

- Fostering partnerships between the permit seeker and the permitting authorities.
- Maximizing resources available to the permitting authority.
- Ensuring transparency, consistency and early communication in the permitting process.

Local permitting authorities can do their part in securing broadband for their residents by implementing the following recommendations:

- Create single points of contact at the local government for permitting.
- Make permitting requirements available online, and allow for electronic document submission, electronic communication, tracking, etc., or utilize e-permitting platforms.

- Avoid duplication by:
 - Allowing permit changes to be “in-process” instead of restarting the whole application when there is a change.
 - Facilitating bulk permitting for similar types of work, larger geographic areas.
 - Leveraging ISP resources to allow use of ISP inspections for post-permit completion.
 - Reducing requirements in already analyzed areas.

TOPIC: Innovation

ISE: If you could wave a magic wand, what groundbreaking product or solution would you like to see introduced for fixed and mobile networks that would accelerate deployment?

Maguire: Because we do not own wireless spectrum, we need to rely on mobile virtual network operator/enabler (MVNO/E) partnerships or Citizens Broadband Radio Service (CBRS), such as free spectrum. We have considered CBRS, but the installation options are complex and costly. It would require technicians to climb on roofs, contractors to install equipment on towers, etc.

We need options, and our partners need to innovate with us to develop these options. We designed and built our fixed wireless voice and data device with unique capabilities (including an ATA for dial tone and a global eSIM). Now, we’re looking for a 5G device with an ATA or even one with LEO satellite capabilities.

If I could wave a magic wand, I would create stronger wireless coverage in the rural non-fiber markets and products that support 4G/5G, and LEO with an ATA. I would make those devices easy for us to dropship and for customers to self-install.

TOPIC: The Elephant in the Room

ISE: What is the broadband industry not addressing that it should?

Maguire: This is something else that keeps me up at night.

The world is very different today—not since my early days in the telecom business, but even since the launch of Brightspeed just a few years ago.

When we launched the company, customers had three choices for broadband: your ILEC, MSO, or wireless handheld devices for some customers.

Competition wasn’t a chip shot, but you could see who your competition was. It was a well-defined market.

Things are very different today thanks to new technologies like FWA and LEOs. Also, overbuilders, MVNOs, and new players are entering the fray.

As a result, we need to think and act differently as an industry. I’ve always advocated for cooperation amongst the telcos, but I think we need to crank that up a bit.

I do not have all the answers, but we must start framing the questions.

TOPIC: Company Culture

ISE: Culture affects almost every element of a company, and employees and leaders alike feel it daily. However, bridging the divide between executive leadership and the general workforce can sometimes be tough. What strategies do you employ, as CEO, to nurture Brightspeed’s company culture?

Maguire: I strongly believe in the old-school basics, such as *following the Golden Rule* and *leading by example*. These are very important to me.

I’ve worked for people who leaned heavily on the “do as I say, not as I do” approach to management. Those people don’t earn or deserve the respect of their teams.

Also, it is essential to check your ego at the door. When we launched Brightspeed, we had an unspoken rule that *big egos don’t matter*, and this starts at the top. Now I realize it is my responsibility to make tough decisions, but you need to do this with as much respect as the situation warrants. Sometimes, you need to be more pointed or direct because people may not be open to change. Other times, you just need to listen. I have learned in this industry that the one constant is change, especially now.

TOPIC: Significant Learning

ISE: What’s an important thing you can teach people about your time in the C-Suite?



Tom collaborating with company leaders.

Maguire: Interestingly, people looked at me differently, which I got a kick out of. But this is an important realization because I had to think about everything I said and did. I was the example that people would follow.

I’ve seen many people in positions of authority who do not realize this, and that can be an issue. For example, an offhand remark I may have made about something not working as I imagined can trigger a team of employees poring through data and creating a detailed analysis. This is wasteful if I was just plain wrong in my understanding of the situation.

When leading large teams, it’s important to be mindful of your words and actions, as this can avoid unnecessary work.

TOPIC: Constant Growth

ISE: What soft skills and leadership strategies are essential for your team members to succeed in this ever-evolving industry?

Maguire: It’s important to know your audience. We do not live in a one-size-fits-all world. How I speak to a garage full



of techs differs significantly from how I address our legislators on the Hill in DC.

Tailoring the message and delivery will help ensure the audience clearly understands and can interpret a clear call to action.

TOPIC: Significant Risks

ISE: What has been your most significant professional risk, and what did you learn from it?

Maguire: Taking on the CEO role may have been my most significant professional risk.

I had never been a CEO. That means I did not know everything I should, and I put my reputation on the line. It took me decades to build this reputation, both the good and bad parts.

I could have stayed peacefully in retirement, but when Bob Mudge called Chris Creager and me and said we could put the band back together, I didn't hesitate for a moment.

Working with those guys, the Apollo team, and the rest of Brightspeed was well worth the risk, and I would do it again in a heartbeat.

TOPIC: Constant Growth

ISE: What new skills or knowledge are you on a mission to learn this year?

Maguire: Not pickleball ... or golf.

TOPIC: Leadership Style

ISE: Share one word that encapsulates your leadership style. Share one word that describes you when you're not working.

Maguire: It's not really a word, but I'll use it for both work and play – WYSIWYG (what you see is what you get). I stole that from Lotus123 (which was the Excel of its time).

You may not always like what you see, but I'll always try to be honest and open.

TOPIC: Balance

ISE: What are your thoughts about a work/life balance?

Maguire: I think my wife, Donna, is a saint.

I am a workaholic. In fact, it's currently 7:30 at night and I'm still sitting in the office. Donna is my life balance. I owe everything I am to her. She kept the lights on when I was out working/playing in the "field."

TOPIC: Legacy

ISE: What do you hope your professional legacy is when you're comfortably retired on a tropical island?

Maguire: I hope people think I always tried to do the right thing for our customers and employees. ■

REFERENCES

1. FCC, <https://docs.fcc.gov/public/attachments/DOC-410304A1.pdf>
2. Brightspeed, https://www.brightspeed.com/brightspeed-news/Brightspeed_Augments_Multi-Billion-Dollar_Fiber_Network_Build_with_First_BEAD_Award.html

Tom Maguire is a company founder, senior advisor to the CEO and a board member for Brightspeed. He is responsible for leading the strategic planning and implementation of the company's strategy and goals, ensuring operational excellence and driving innovation across the enterprise. He oversees the company's business development opportunities and customer-focused improvements and growth. Tom brings more than four decades of telecommunications experience to Brightspeed. Starting as a field technician, he built his career from the ground up. For more information, visit www.brightspeed.com.

Take your distributive split network to a whole new level with RaDD's RFDC Splice Enclosures!



Introducing RaDD's newest Fiber Distribution Splice Enclosures: the RFDC48-8 (Connectorized Drops), RFDC48-DS (Direct Splice Drops) and Nano (Drop Repair and optional 2 port SC/APC Duplex Bulkheads).

The RFDC Line is compact, rugged, and designed with easy cable and drop access to speed up deployments.

Get ready to experience a new level of efficiency and performance with these robust and feature driven enclosures.



RFDC48-8



RFDC48-DS



RFDC-Nano



Contact us today for more information:



(920) 328-1020



info@raddnetwork.com



RaDDNetwork.com



ISE EXPO
ICT SOLUTIONS & EDUCATION

JULY 29-31, 2025
ERNEST N. MORIAL CONVENTION CENTER
NEW ORLEANS, LA

WHERE INNOVATION MEETS CONNECTIVITY

2025 PROGRAM GUIDE

OWNED AND PRODUCED BY:



PRESENTED BY:



Stay connected and
informed on the go!
Download the official
ISE EXPO mobile app.

ISE EXPO

JULY 29-31, 2025 | ERNEST N. MORIAL CONVENTION CENTER | NEW ORLEANS, LA

#ISEEXPO



RELIABLE BATTERY SOLUTIONS
RESERVE POWER



HTB Series High Operating Temperatures - Thin Plate Pure Lead – TPPL (100Ah to 210Ah)

VRLA battery designed with high temperature resistant materials and a catalyst vent to maximize life in applications where nominal operating temperatures are 35°C.

CXL Series Extreme Long Life High Temperature – CATV (107Ah)

VRLA battery specifically design to meet environmental performance requirements of any broadband cable and outside plant application. Utilizing a high temperature resistant lead alloy, catalyst vent and optimized plate technology offering exceptional service life.

MPLhE Series Lithium (100Ah to 200Ah)

Over a decade of proven performance, these Lithium (LFP) batteries offer exceptional cycle and service life with a compact size are 19" rack mountable and provide significant weight reductions over traditional VRLA batteries. These are available in 36V (CATV), 48V and 58V (5G) options.

FEN Series Lithium (50Ah)

Suited for OSP, telecom 5G applications, this Lithium (LFP) 48V nominal battery is rated for temperatures up to 60C, IP65 environmental protection and designed to be mountable to poles, cabinets, and buildings.

YOUR RELIABLE LITHIUM AND VRLA BATTERY SOLUTIONS

MP Narada



SCAN ME



WELCOME TO ISE EXPO 2025!

We're thrilled to have you join us for this year's event, themed "Where Innovation Meets Connectivity." This theme reflects the exciting future unfolding across network infrastructure—and the role each of you plays in shaping it.

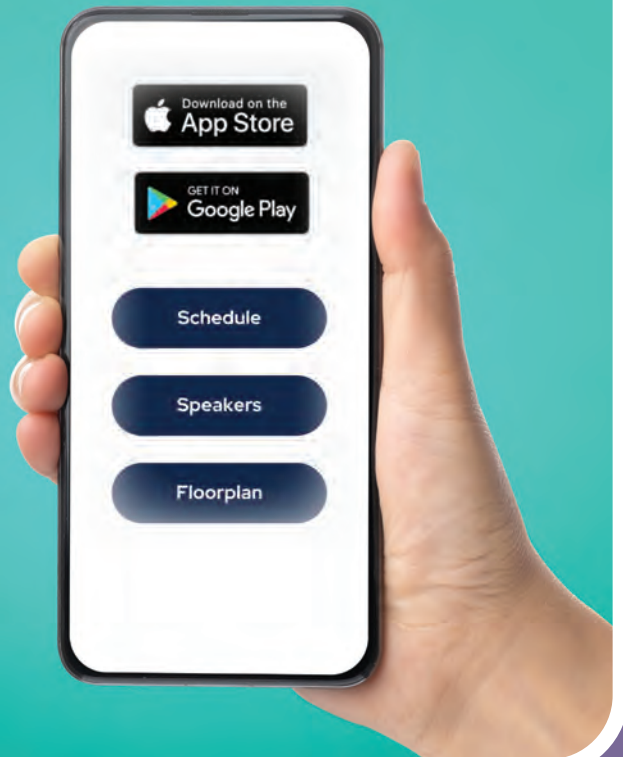
Over the next few days, get ready to collaborate with the brightest minds in the industry, dive into thought-leading educational sessions, explore hands-on product demos, and experience dynamic exhibits—all designed to help you deliver faster, more reliable connectivity to your customers and communities.

We've also built in networking opportunities and social receptions to help you grow your industry relationships with ease. Whether you're a broadband operator, network engineer, manufacturer, or business leader, ISE EXPO is your opportunity to stay ahead of emerging trends and bridge the gap between today's challenges and tomorrow's solutions.

Let's innovate, connect, and move the industry forward—together.

For the Latest Updates, Download the Mobile App!

Scan QR code or search "ISE EXPO 2025" in the app store to view recent exhibitor additions, new conference sessions, and exciting on-site updates!



SCHEDULE AT A GLANCE

MONDAY, JULY 28

11:00 AM – 5:00 PM Exhibitor Move-in

TUESDAY, JULY 29

7:30 AM – 2:00 PM Golf Outing

8:00 AM – 5:00 PM Exhibitor Move-in

9:00 AM – 11:00 AM Preconference Workshops (*additional fee required for Technician Shortage workshop; pre-registration required for Ribbon Splicing workshop*)

10:00 AM – 5:00 PM Registration Open

11:30 AM – 1:00 PM Women in Telecom (WiT) Lunch & Panel Discussion (*additional fee required*)

1:15 PM – 4:45 PM Conference Sessions

WEDNESDAY, JULY 30

7:00 AM – 5:00 PM Registration Open

7:00 AM – 10:00 AM Exhibitor Move-in

8:00 AM – 9:00 AM ISE Network Innovators' Awards Breakfast

8:00 AM – 10:15 AM Conference Sessions

10:30 AM – 11:30 AM Opening Keynote | **Julie Slattery, Senior Vice President, Core Engineering & Operations, Verizon**

11:30 AM – 5:00 PM Exhibit Hall Open

12:00 PM – 1:30 PM Lunch on Exhibit Floor

3:30 PM – 5:00 PM Networking Happy Hour on Exhibit Floor

THURSDAY, JULY 31

7:00 AM – 2:30 PM Registration Open

8:00 AM – 10:15 AM Conference Sessions

8:00 AM – 2:30 PM Workforce Development Executive Insights Panel Discussion & Half-Day Program

10:30 AM – 11:30 AM Executive Insights Closing Keynote | **Tom Maguire, Founding Leader and Board Member, Brightspeed**

11:30 AM – 3:00 PM Exhibit Hall Open

12:00 PM – 1:30 PM Lunch on Exhibit Floor

2:45 PM – 3:00 PM Attendee Vacation Giveaway in ISE EXPO Rebooking Booth

3:00 PM – 7:00 PM Exhibitor Move-out

FRIDAY, AUGUST 1

8:00 AM – 12:00 PM Exhibitor Move-out



Bringing Value to Those Building
the **BROADBAND HIGHWAY**



VISIT OUR BOOTH
SEE NEW
PRODUCTS &
LEARN ABOUT
OUR SERVICES.

Adtran



COMMScope®



ISE BOOTH
1312

99.9% Accurate Delivery

*Enabling Connectivity Wherever People
Work, Learn, and Play.*

ptsupply.com

Don't Miss These New Features

NEW FOR THIS YEAR!

2025 Women in Telecom (WIT) Lunch & Panel Discussion

Tuesday, July 29, 11:30 AM – 1:00 PM

ADD ON: \$40.00

SPONSORED BY:



Join us for roundtable discussions during a plated lunch focused on essential topics such as career advancement, work-life balance, diversity, well-being, leveraging AI as a professional tool, and personal branding. Following lunch, get inspired by an engaging panel of accomplished executive women from the broadband industry. This insightful discussion will cover a range of relevant and timely topics, including:

- » The personal career journeys of each panelist.
- » The single most pivotal moment or decision that shaped their careers.
- » Key advice and lessons for growing a company and advancing professionally.



- » Diversity, equity, and inclusion (DEI) initiatives at their firms—what's effective and what challenges remain.
- » Strategies for developing top-tier talent.
- » Their outlook and strategic plans for 2025–26 and beyond.

The session will be followed by an interactive Q&A segment between the panel and audience and concludes with several high-end sponsored giveaways you don't want to miss! In addition, each attendee will receive a special inspirational gift.

The WiT luncheon is a \$40 add-on and must be purchased as an addition to any ISE EXPO attendee pass.

Golf Tournament

Tuesday, July 29

LAKEWOOD GOLF CLUB

4801 General Degaulle Drive, New Orleans, LA 70131

ADD ON: REGISTRATION FEE: \$195 | CLUB RENTAL COST: \$45 INCLUSIVE

Registration includes course fees, access to driving range, golf cart, breakfast, 4 drink tickets, lunch, and awards. Transportation is not provided.

7:20 AM – 8:00 AM

Check in & Breakfast

12:30 PM

Awards & Buffet Lunch

8:00 AM

Shotgun Start



NEW FOR THIS YEAR!

Workforce Development Executive Insights Panel Discussion & Half-Day Program

Thursday, July 31, 8:00 AM – 2:30 PM

PRICING

- » Full Conference Registrants: The half-day program is Included in your registration fee but you must RSVP. Lunch is an additional fee of \$40. Visit Registration to RSVP for the program and/or add lunch to your registration if you have already registered.
- » Non-Conference Registrants: \$75.00 (Includes access to the Program for all three days and free access to the Exhibit Hall Wednesday and Thursday).
- » Lunch (plated sit-down luncheon) is an additional registration fee of \$40 for full or non-conference registrants.

8:00 AM – 9:00 AM; Room 286-287

State of the Industry Panel Discussion & Audience Q&A

Join five broadband leaders as they explore the challenges, best practices and successes to recruit, retain and inspire the broadband workforce that evolves the fixed and mobile networks we all rely on to live, work and play.

Executives:



MODERATOR: Steve Harris, *Harris DigiTech Academy & Solutions/Learning Alliance*



PANELIST: Thomas Tyler, *ConnectLA*



PANELIST: Chris Disher, *Cajun Broadband*



PANELIST: Fred Arnold, *Learning Alliance Corporation*



PANELIST: Bo Gresham, *Dycom*



9:15 AM – 10:15 AM; Room 286-287

Best Practices: Training & Expanding the Broadband Workforce

ConnectLA shares challenges/opportunities for the state and economic development; and providers share best practices/stories/future initiatives about broadband training and growth.

10:30 AM – 11:30 AM; New Orleans Theatre C

Executive Insights Closing Keynote: The Telecom Tipping Point



Tom Maguire, Founding Leader and Board Member, *Brightspeed*

11:45 AM – 1:00 PM; Room 286-287

ADD ON: \$40.00

Lunch followed by Executive Fireside Chat & Audience Q&A

Plated sit-down lunch.

Registration required + additional fee of \$40.

1:00 PM – 2:30 PM

Sponsored Tech Training Tours on Exhibit Floor

ISE EXPO 2025 CONFERENCE PROGRAM



For the latest updates,
download the ISE
EXPO mobile app!



TRACK:
Automation, AI, Reliability,
Security & Network-as-a-Service

TRACK:
Designing, Construction,
Engineering & Operations
(Fixed & Mobile)

TUESDAY, JULY 29, 2025

Women in Telecom (WiT) Lunch & Panel Discussion

(Additional cost for this luncheon is \$40.00)

11:30 AM - 1:00 PM

ROOM 286-287

Panel Moderator: Janice Oliva, *Endeavor Business Media*

Verizon Case Study: Leveraging AI & Automation for Secure, Reliable, and Scalable Networks

1:15 PM - 2:15 PM

ROOM 276

Speaker: Kristi Dent, *Verizon*



How AI & Digital Innovation Will Reshape Network Construction

1:15 PM - 2:15 PM

ROOM 279/280

Speaker: Robert Laudati,
Render Networks



The Future of Analytics and Big Data in Telecommunications

2:30 PM - 3:30 PM

ROOM 276

Speaker: Steve Harris,
*Harris DigiTech Academy &
Solutions/Learning Alliance*



AT&T Panel Discussion: Open RAN Network Modernization Best Practices

2:30 PM - 3:30 PM

ROOM 279/280

Panel Moderator: Ian Sinclair, *AT&T*

Panelists: Chad Archer, *AT&T*

Matt Jones, *Ericsson*

Vicki Littlefield, *AT&T*

TRACK:
FTTx Networks
(Fixed & Mobile)

TRACK:
Permitting,
Regulation, BEAD

TRACK:
Industry Outlook,
Workforce & Leadership

**Addressing the Technician Shortage:
Preparing Technicians for Success
in Fiber Optic Telecom Roles**

*Additional cost for this preconference
workshop is \$75.00.*

9:00 AM - 11:00 AM

ROOM 275

Speaker: Sean Kelly, *RCDD, CFHP,
Light Brigade*

**Demystifying Ribbon
Splicing and Its Applications**

*Included in full conference fee
but you must pre-register.*

9:00 AM - 11:00 AM

ROOM 276

Speaker: Andrew Degidio,
Sumitomo Electric Lightwave

SPONSORED BY:  **SUMITOMO ELECTRIC
LIGHTWAVE**



Panelists:

Kelly Bohlman, *TDS Telecom*

Wendy Danielson, *Norvado*

Michelle Yirka, *Chisholm Broadband*

Carrie Charles, *Broadstaff*

Terri Moore, *GFiber*

**How Are APIs and CPaaS/UCaaS/
CCaaS Adding Value to Modern
Cloud Comms Platforms?**

1:15 PM - 2:15 PM

ROOM 281/282

Speaker: Myron Wallace, *White Label
Communications*

**Navigate Complex Permitting
Processes in Four Steps**

1:15 PM - 2:15 PM

ROOM 275

Speaker: Ryan Kuder, *Finley Engineering*

**Tackling Workforce Gaps: Adaptive
Leadership and Innovative
Training for Telecom Success**

1:15 PM - 2:15 PM

ROOM 277

Speaker: Sable Lomax,
The Leadership Standard

**Norvado Case Study: Leveraging
Automation for Advanced
Project Management Through
Business Intelligence (BI) Tools**

2:30 PM - 3:30 PM

ROOM 281/282

Speakers: William Kurtz, *Norvado, Inc.*
Wendy Danielson, *Norvado, Inc.*

**Research Panel: A Look at BEAD
from the State Broadband
Office Perspective**

2:30 PM - 3:30 PM

ROOM 277

Panel Moderator: Hayden Beeson,
Endeavor Business Media

Speaker: Will Miller, *AFL*

ISE EXPO 2025 CONFERENCE PROGRAM



For the latest updates,
download the ISE
EXPO mobile app!



TRACK:

Automation, AI, Reliability,
Security & Network-as-a-Service

TRACK:

Designing, Construction,
Engineering & Operations
(Fixed & Mobile)

TUESDAY, JULY 29, 2025

**Empowering Agility and
Security with Automation, AI,
and Network-as-a-Service**

3:45 PM - 4:45 PM

ROOM 276

Speaker: Chris Bonavita, *GTT*

**Your Power Play: Hydrogen Fuel Cells
or Internal Combustion Generators**

3:45 PM - 4:45 PM

ROOM 279/280

Speaker: Jerry Hogan, *Solara Technical*

WEDNESDAY, JULY 30, 2025

**Advances in Powering
Network Resilience**

8:00 AM - 9:00 AM

ROOM 276

Speakers: Kevin Borders, *Borders &
Associates, LLC*

Jerry Hogan, *Solara Technical*

David Michlovic, *Vertiv*

**National Electrical Code
(NEC) and National Electrical
Safety Code Standards
Updates**

8:00 AM - 9:00 AM

ROOM 279/280

Speaker: Ernest Gallo, *NEBScore*



**Artificial Intelligence –
Concepts and Applications for
Telecom Professionals**

9:15 AM - 10:15 AM

ROOM 276

Speaker: David Curran, *Frontier
Communications*

Strategic Cable Recovery 2.0

9:15 AM - 10:15 AM

ROOM 279/280

Speaker: Jeffrey Manion, *ExtractIQ Cable
Infrastructure Partners, LLC*

**AT&T Case Study: AI and
ML Empowers Networks**

9:15 AM - 10:15 AM

ROOM 281/282

Speaker: Maulik Shah, *AT&T*

**Opening Keynote – Building Resilient Communities:
Enhancing Disaster Preparedness and Response Through
Technology, Innovation and Partnership**

10:30 AM - 11:30 AM

NEW ORLEANS THEATRE C

Speaker: Julie Slattery, *Verizon*

TRACK:
FTTx Networks
(Fixed & Mobile)

TRACK:
Permitting,
Regulation, BEAD

TRACK:
Industry Outlook,
Workforce & Leadership

**FTTx's Next Step:
Fiber-to-the-Room (FTTR)**
3:45 PM - 4:45 PM

ROOM 281/282

Speaker: Mark Boxer, *OFS*



BEAD and Surety
3:45 PM - 4:45 PM

ROOM 275

Speakers: Paul Sandroni, *Brown & Brown*
Quintin Petty, *Brown & Brown*

**Enhance Network Operations
by Integrating Cybersecurity,
Supply Chain Security &
Quality Management**

3:45 PM - 4:45 PM

ROOM 277

Speaker: Ken Koffman,
*Telecommunications Industry
Association (TIA)*

**Overcoming Brownfield MDU
Complex Cabling Challenges**

8:00 AM - 9:00 AM

ROOM 281/282

Speaker: Peter Beard,
PPC Broadband



**Exploring Accurate Pole
Attachment Technology to
Increase Time to Market**

8:00 AM - 9:00 AM

ROOM 275

Speaker: David Mohammed,
Osmose Utilities

**Building Resilient Telecom
Teams with WISER Adaptive
Leadership and Coaching**

8:00 AM - 9:00 AM

ROOM 277

Speaker: Erin Wheeler,
Gracefully Productive

**Success in Managing, Permitting
and Regulatory Processes
for BEAD Projects**

9:15 AM - 10:15 AM

ROOM 275

Speakers: Lori Adams, *Nokia*
Joe Baeumel, *KGPCo*
Bill Brungardt, *BHC*
Eli Coniglio, *Eocene
Environmental Group, Inc.*

ISE Executive Panel Discussion

9:15 AM - 10:15 AM

ROOM 277

Panel Moderator: Janice Oliva, *Endeavor
Business Media*

Panelists: Anis Khemakhem, *Clearfield*
Randall René, *Esri*
Kevin Czaicki, *Millennium*
Michael White,
TAK Communications
Jake Woods, *Vitruvi*

ISE EXPO 2025 CONFERENCE PROGRAM



For the latest updates,
download the ISE
EXPO mobile app!



TRACK:
Automation, AI, Reliability,
Security & Network-as-a-Service

TRACK:
Designing, Construction,
Engineering & Operations
(Fixed & Mobile)

THURSDAY, JULY 31, 2025

**Drive Network Value by
Leveraging Gen AI**

8:00 AM - 9:00 AM

ROOM 276

Speaker: Andy Stahl, *Databricks*



**Making the Move to Fiber-
Dominance for 5G DAS Deployments**

8:00 AM - 9:00 AM

ROOM 279/280

Speaker: Mohammed Ali, *Advanced RF Technologies*



**Leveraging AI and Automation
to Streamline Network Data**

9:15 AM - 10:15 AM

ROOM 276

Speaker: Meredith Bliss, *3-GIS*



**From Sky to Street: Using Drones
and Custom Imagery to Build
Smarter Broadband Networks**

9:15 AM - 10:15 AM

ROOM 279/280

Speaker: Jason Fuller, *CHR Solutions*



Executive Insights Closing Keynote – The Telecom Tipping Point

10:30 AM - 11:30 AM

NEW ORLEANS THEATRE C

Speaker: Tom Maguire, *Brightspeed*

TRACK:
FTTx Networks
(Fixed & Mobile)

TRACK:
Permitting,
Regulation, BEAD

TRACK:
Industry Outlook,
Workforce & Leadership

**Consolidated Communications
Case Study: Partnerships are Key
to Expanding Rural Broadband**

8:00 AM - 9:00 AM

ROOM 281/282

Speaker: Sarah Davis, *Fidium Fiber/
Consolidated Communications*

**Maximizing BEAD Funding
with Smart Network Solutions:
Extending Life Cycles, Reducing
Costs, and Building Sustainable
Broadband Networks**

8:00 AM - 9:00 AM

ROOM 275

Speaker: Mike Meagher, *Tempest
Telecom Solutions*



**Workforce Development Executive
Insights Panel Discussion & Half-
Day Program** *(Pre-registration required.)*

8:00 AM - 2:30 PM

ROOM 286-287

Moderator: Steve Harris, *Harris DigiTech
Academy & Solutions/Learning Alliance*

Panelists: Bo Gresham, *Dycom*

Chris Disher, *Cajun Broadband*

Fred Arnold, *Learning Alliance
Corporation*

Thomas Tyler, *ConnectLA*

**UTOPIA Fiber Case Study:
Scaling Open Access Networks
from 100 Mbps to 10G**

9:15 AM - 10:15 AM

ROOM 281/282

Speaker: Jeff Meyer, *UTOPIA Fiber*



**BEAD: Building America's
Connectivity and Workforce
for a Fiber-Driven Future**

9:15 AM - 10:15 AM

ROOM 275

Speaker: Kevin Morgan, *Clearfield*

**Unleash the Hero Within:
Harnessing Organic
Intelligence in the Age of AI**

9:15 AM - 10:15 AM

ROOM 277

Speakers: John Armstrong, *Full Spectrum
Coaching and Consulting*

Jeston Baker, *Velocity Tech
Solutions*



BUILD YOUR TO-DO LIST FOR ISE EXPO 2025!

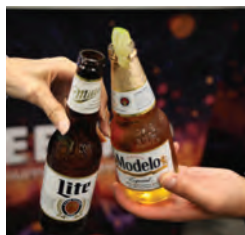
✓ Attend Conference Sessions

Learn from over 75 industry experts in a variety of sessions designed to educate, inspire, and engage.



✓ Connect at the On-Site Happy Hour

Join us for a special Networking Happy Hour, Wednesday, July 30, starting at 3:30 PM. Connect with fellow attendees, exhibitors, and sponsors over drinks and appetizers, and take the opportunity to build valuable professional relationships in a casual setting.



✓ Explore the ISE EXPO Exhibit Hall

Featuring over 175 exhibitors displaying the latest ICT solutions.



✓ Learn from Leading Executives

Join industry leading titans as they gather to provide a compelling, content-rich conversation to share personal insights, and discuss the latest ICT trends and challenges.



✓ Tee Off at 4th Annual Golf Tournament

Swing into ISE EXPO week, Tuesday, July 29, with a day on the green for the perfect blend of business and pleasure.



✓ Women in Telecom Panel

Join us for roundtable discussions during a plated lunch focused on essential topics such as career advancement, work-life balance, diversity, well-being, leveraging AI as a professional tool, and personal branding. Following lunch get inspired by an engaging panel of accomplished executive women from the broadband industry.



✓ Opening & Closing Keynotes

Expert insights from the leaders of Verizon and Brightspeed.



✓ Workforce Development Executive Insights Panel Discussion & Half-Day Program

Join five broadband leaders on Thursday, July 31, at 8:00 AM, as they explore the challenges, best practices and successes to recruit, retain and inspire the broadband workforce that evolves the fixed and mobile networks we all rely on to live, work and play.



✓ Win a Vacation to Mexico for Two!

Participate on-site in our "Passport to Prizes" and enter for a chance to win a 3-night stay at the Paradisus Playa del Carmen – Riviera Maya in Mexico, including round trip tickets from your home city, airport/resort transfers and all meals & drinks included.





ISE EXPO

ICT SOLUTIONS & EDUCATION

Visit us at Booth 1217, July 30th-31st 2025,
New Orleans, LA

Dome Enclosure



Includes an integrated slack storage basket, interlocking splice trays via a modified keyhole style stacking module, and an easy to install no special tool sealing system.

Optical Terminal



Designed to save time, money and space. Easy installation is as simple as open, secure fiber, plug in and close.



www.gomultilink.com



(440) 366-6966



580 Ternes Ln, Elyria, OH 44035

Build America, Buy America



KEYNOTE HIGHLIGHTS

OPENING KEYNOTE

Wednesday, July 30, 10:30 AM – 11:30 AM

NEW ORLEANS THEATRE C

Building Resilient Communities: Enhancing Disaster Preparedness and Response Through Technology, Innovation and Partnership



verizon

Julie Slattery

Senior Vice President,
Core Engineering & Operations
Verizon

Verizon has a decades-long history of collaborating with partners across the telecom industry to deliver effective communication solutions that aid public safety, particularly during emergencies. By utilizing new technologies, developing innovative solutions, and partnering with industry, government, and community stakeholders, Verizon is committed to improving disaster preparedness and revolutionizing emergency management.

Join Julie Slattery for a discussion on Verizon's disaster resilience approach that includes preparing for any situation, being ready to respond, providing post-disaster recovery assistance and using technology and learnings to mitigate potential future emergencies. The keynote will dive into the extreme lengths engineers go to run to a crisis and keep communities connected offering real-life anecdotes and learnings.

The primary areas of focus will be on the importance of internal and external partnerships, leveraging emerging technologies including AI and highlighting key strategies that can be implemented in organizations of all sizes.

EXECUTIVE INSIGHTS CLOSING KEYNOTE

Thursday, July 31, 10:30 AM – 11:30 AM

NEW ORLEANS THEATRE C

The Telecom Tipping Point



brightspeed

Tom Maguire

Founding Leader and
Board Member
Brightspeed

For more than a decade, Tom Maguire has championed modernization in the telecom industry—away from unreliable, costly copper networks to new, more resilient technology that easily adapts to innovation and consumer needs. We are now at a pivotal point when federal oversight is aligned, state-level changes are underway, the industry's labor force is ready to execute, and scalable connectivity is possible. Copper is the past, and now is the time to embrace the future. When all the players in the industry work together, the possibilities are infinite.



DURALite®



TIER 15 & 22 RATED.
75% LIGHTER THAN
POLYMER CONCRETE.
ENGINEERED TO DO MORE.
Handled.

Our customers challenged us. And we raised the bar. The new Duralite® enclosure delivers the same tier-rated strength and sustainability with up to 75% less weight than polymer concrete—helping crews work safer, faster, and smarter.



See how Duralite® is changing the game.

Visit Oldcastle Infrastructure™ Booth 1313
at the ISE Expo.



Conduit and mouseholes

Cable racking and divider slots

Fiber drop holes

Pulling eyes

Enhanced stackability

THANK YOU TO OUR 2025 SPONS



ORS AND INDUSTRY PARTNERS!

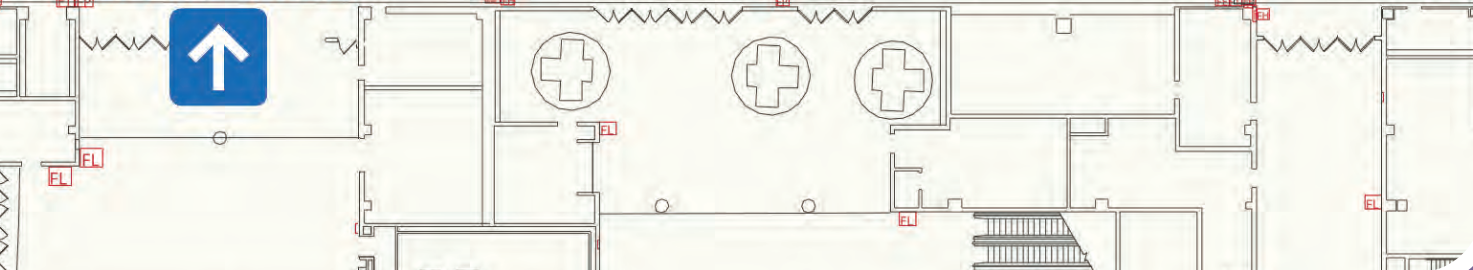


EXHIBIT HALL FLOOR PLAN





ENTRANCE



EXHIBITORS

**3-GIS** 1633

6766 S Revere Pkwy
Centennial, CO 80112
Tel: 720-279-9894
www.3-gis.com

3-GIS, an SSP Innovations company, delivers telecom network management software and services that helps companies worldwide accelerate revenue, ensure data integrity, and support smarter planning, design, construction, and operations across their organizations.

A-Aerial, a Division of Altec Industries 1713

3462 Webster Ave
Perris, CA 92571
Tel: 800-256-5186
linemen-tools.com/default.asp

We are here to meet all your construction and tooling needs. We offer competitive rates for cable lashers, cable pulling trailers, pole line hardware and overhead products, underground tools and hardware, fiber optic closures and fiber optic tools.

**Accelight Technologies, Inc.** 812

5674 Stoneridge Dr Ste 109
Pleasanton, CA 94588
Tel: 925-255-5899
www.accelight.com

Accelight Technologies is a USA-based company that manufactures fiber optic passive, active pluggable modules and outside plant fiber enclosures used in the transmission of fiber optic networks for telco, broadband access, cable TV, and data centers.

**AFL** 839

170 Ridgeview Center Dr
Duncan, SC 29334
Tel: 864-433-0333
www.AFLglobal.com

At AFL, we offer a true end-to-end solution. From network design, engineering, construction and maintenance to hardware, connectivity products, fiber optic cable, fusion splicers, test and inspection equipment, and education, AFL has it all.

Allied Bolt, Inc. 1145

7 Rye Ridge Plaza Ste 186
Rye Brook, NY 10573
Tel: 516-512-7600
www.alliedboltinc.com

We are a world-leading supplier of outside plant hardware. Allied is a division of Power Grid Components LLC. Our products are grouped into nine primary categories: Earth anchors, poleline hardware, aerial drop hardware, drop attachments, grounding hardware, banding products, tools, wall anchors, and fasteners.

Altec-Fenex 1613

610 Illinois Ave
Sandoval, IL 62882
Tel: 618-247-3200
www.teamfenex.com

Altec-Fenex specializes in designing and manufacturing specialized trailers and upfitting light duty vehicles for fiber optic cable splicing and underground utilities and has done so since 1998.

American Polymer Company 820

2201 NW 16th St
Pompano Beach, FL 33069
Tel: 404-694-5575
www.apcunderground.com

American Polymer Company provides infrastructure solutions for all your needs in utility access and protection. We are committed to providing best-in-class enclosures, handholes, and vaults to protect and provide access to critical infrastructure.



x



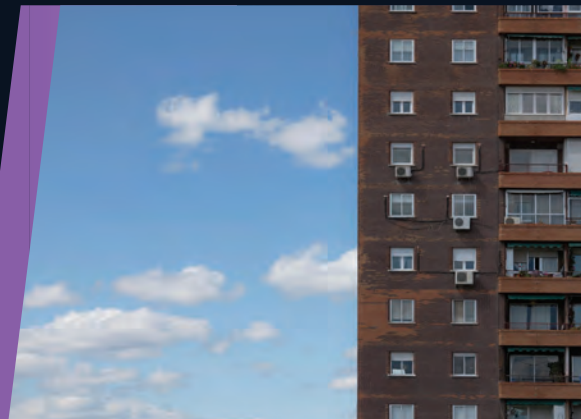
PRECISION
OPTICAL TECHNOLOGIES

x



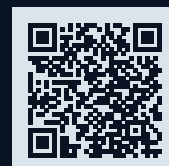
SICHERT
Your Partner

PPC QuikPass™ Solution: A Must-Have in Fiber Connectivity



PPC QuikPass™ is developed to be:

Easy to Install • Minimalist
Aesthetically Pleasing • Robust



Read our
Case Study

BROADBAND SOLUTIONS



American Polywater 723

11222 60th St N
Stillwater, MN 55082
Tel: 651-275-2813
www.polywater.com

Polywater is a leading manufacturer of high-quality specialty cable lubricants, new ferrule cleaners, fiber and cable gel cleaners, duct sealant systems and HDPE conduit joining adhesives. Visit our booth to learn more about ZipSeal, our newest innovation in duct sealing.

American Products, LLC 1433

597 Evergreen Rd
Strafford, MO 65757
Tel: 417-736-2135
amprod.us

American Products, based in Strafford, MO, has crafted US-made telecommunications enclosures for over 20 years. We offer modular systems, engineering, manufacturing, and logistics solutions, ensuring superior quality, integration, and durability to protect critical equipment.



ARIA by ProLabs 847

102 Wright Brothers Ave
Livermore, CA 94551
Tel: 925-447-7500
www.ariatech.com

ARIA by ProLabs has been an industry-leading designer, manufacturer, and provider of high-performance fiber optic cable assemblies and enclosures since 1991 to data centers, telecommunications providers, cable TV operators, and intelligent transportation systems.

Asentria Corporation 721

1200 N 96th St
Seattle, WA 98103
Tel: 425-891-2966
www.asentria.com

Asentria manufactures the SiteBoss® Site Controller for monitoring and controlling the systems at remote communication sites. The SiteBoss® is a powerful edge computing device that brings remote site monitoring to the next level.



Atkore 813

16100 Lathrop Ave
Harvey, IL 60426
Tel: 708-915-1586
www.atkore.com

Atkore United Poly Systems manufactures HDPE conduit in convenient locations across the country. Our HDPE product offering includes cable-in-conduit, microduct, and innerduct, all made in the USA and Build America, Buy America compliant.

BAYCOM, Inc. 1812

2040 Radisson St
Green Bay, WI 54302
Tel: 414-546-2360
www.baycominc.com

BAYCOM delivers mission-critical communication and security solutions with expert integration, long-term support, and unwavering reliability—ensuring your operations stay connected, protected, and running when it matters most.

Belden 1039

6176 E Molloy Rd
Syracuse, NY 13057
Tel: 315-431-7200
www.ppc-online.com

Belden's broadband solutions business—made up of PPC, Precision OT and Sichert brands—delivers a portfolio of end-to-end fiber and copper solutions for broadband and wireless deployments around the world.

Blue Diamond Industries, LLC 1734

4040 Finn Way #240
Lexington, KY 40517
Tel: 859-224-0415
www.bdiky.com

Blue Diamond Industries is a valued market leader in providing High Density Polyethylene (HDPE) conduit solutions for the protection of fiber optic, data and power cables.

Border States Electric 1424

2400 38th St S
Fargo, ND 58104
Tel: 701-239-2316
www.borderstates.com

Border States asks the right questions, listens closely and customizes solutions based on your business goals. We provide the products, services and solutions you need when and where you need them.

Brother International Corporation 1814

11030 Circle Point Rd Ste 100
Westminster, CO 80020
Tel: 609-442-7032
www.brothermobilesolutions.com

Brother International Corporation's powerful printers and labels are specifically designed to withstand extreme temperatures, chemical exposure, and moisture in industrial environments, ensuring long-lasting, clear labels for your wires, cables, and safety signage.

Brown & Brown 527

45 E Ave 7th Fl
Rochester, NY 14604
Tel: 585-737-0382
www.bbrown.com

Brown & Brown, Inc. provides risk management solutions tailored to industry specific needs related to property and casualty, surety, employee benefits, executive liability, and captive management.



COYOTE® PEDESTALS

RUGGED EXTERIOR MEETS ADAPTABLE INTERIOR

Available in 6", 8", or 10" Sizes for Flexible Network Deployment

PLP.COM

Budco, Inc. 1022

2004 N Yellowwood Ave
Broken Arrow, OK 74012
Tel: 800-331-2246
www.budcocable.com

Budco is your stocking distributor for cable construction, installation and identification products and tools. We have been serving the cable professional since 1970. Build It, Install It, Identify It!

CableSouth Construction, LLC 622

1056 Jones Blvd
Milan, TN 38358
Tel: 731-780-4955
www.cablesouth.com

We are a specialized FTTH construction contractor offering a range of services including aerial and underground fiber optic construction, fiber splicing, project management, and fiber maintenance. Additionally, we handle ONT installations, underground fiber drops, aerial fiber drops, and provide emergency response services.



Automation

Camozzi Automation, Inc. 1635

2160 Redbud Blvd Ste 101
McKinney, TX 75069
Tel: 972-548-8885
www.camozzi-usa.com

Camozzi Automation, with 50+ years of industrial automation manufacturing, delivers innovative solutions that enhance customer success. V4000 microduct connectors, meeting CEI EN50411-2-8, enable rapid installation. Series N filters ensure clean air for optimal fiber jetting.

CE+T America 1918

2150 Boggs Rd Bldg 300 Ste 300
Duluth, GA 30096
Tel: 610-663-5601
www.cet-america.com

CE+T America designs, manufactures, and brings to market a wide range of energy management solutions and backup power systems (inverters & UPS) for telecom/commercial and industrial customers worldwide. Made in America (Duluth, GA).



Centillion Solutions 741

6030 Bethelview Rd Ste 301
Cumming, GA 30040
Tel: 678-908-9961
www.centillionsolutions.com

Centillion Solutions is a provider of engineering services – telecom, utility, LiDAR, BIM, drones, AI and software.

Century-Tywood J3 Corporation 732

79 Lowland St
Holliston, MA 01746
Tel: 507-429-2342
centuryfiberoptics.com

Century Fiber Optics manufactures a complete line of passive fiber optic interconnect products and accessories for wall mount, rack mount, and OSP applications, and is a leading fiber optic enclosure supplier.

Channell 827

1700 Justin Rd
Rockwall, TX 75087
Tel: 909-719-2600
www.channell.com

Channell's Fiber-X and Shield-X are committed to making the world of fiber optics a better place through design, innovation and service. We have over 100 years of experience and proven features for the telecom, broadband and utility industries.



Charles Industries LLC, an Amphenol Company 1113

1450 American Ln 20th Fl
Schaumburg, IL 60173
Tel: 847-806-6300
www.charlesindustries.com

An Amphenol Company, Charles Industries designs and manufactures a comprehensive line of enclosure solutions for converging communications that protect critical network infrastructure for the wireless, FTTx, broadband cable, and utility markets.

CHR Solutions 539

9700 Bissonnet Ste 2900
Houston, TX 77036
Tel: 713-351-5111
www.chrsolutions.com

From idea to income, CHR Solutions empowers broadband providers to build smarter, more profitable businesses with expertise in advanced engineering, cutting-edge cybersecurity, and automated operations and e-commerce software.

Clearfield, Inc. 913

7050 Winnetka Ave N
Minneapolis, MN 55428
Tel: 763-476-6866
www.seeclearfield.com

Clearfield is a Fiber to Anywhere company, setting the standard for delivering (on time!) a scalable fiber optic network and unmatched fiber performance while lowering the cost of broadband deployment.

Clinton Electronics.....1122

6701 Clinton Rd
Loves Park, IL 61111
Tel: 800-447-3306
www.clintonelectronics.com

At Clinton Electronics, we help retailers build safer, more secure environments while enhancing the customer experience. With decades of expertise, we deliver innovative display and surveillance solutions that drive measurable results.

CommScope Holding Company, Inc. 1131

3642 E US Hwy 70
Claremont, NC 28610
Tel: 828-459-5000
www.commscope.com

CommScope is pushing the boundaries of technology to create the world's most advanced wired and wireless networks. Our global team of employees, innovators and technologists empower customers to anticipate what's next and invent what's possible.

Conduit Direct Group..... 823

2102 Robins Rd
Hiawatha, IA 52233
Tel: 319-405-1911
www.conduitdirectgroup.com

Conduit Direct Group is the conduit provider that goes the extra mile. Whether you're in telecommunications, utilities or infrastructure development, we have you covered with our innovative products designed to withstand the test of time.

Condux 830

145 Kingswood Dr
Mankato, MN 56001
Tel: 800-533-2077
www.condux.com

Condux International has been the premier manufacturer of cable installation tools and equipment for the telecom and fiber optic markets for over 40 years. Our products allow safe, quick and accurate installation.

Copperhead Industries..... 720

9530 Fallon Ave NE
Monticello, MN 55362
Tel: 877-726-5644
copperheadwire.com

Copperhead Industries provides end-to-end solutions for accurate underground utility locating. Our USA-made, BABA-compliant Complete Utility Locating System® includes CCS tracer wire, connectors, ground rods, access points, and marker posts—built for durability and compatibility.

Corning Optical Communications..... 1239

4200 Corning Pl
Charlotte, NC 28216
Tel: 800-743-2675
www.corning.com/opcomm

Since ushering in the telecommunications revolution with the invention of low-loss optical fiber in 1970, Corning has been continually innovating to increase the speed and capacity of optical fiber networks.

Craftmark Cable Markers... 1321

3212 S Cravens Rd
Fort Worth, TX 76119
Tel: 800-627-5255
craftmarkid.com

Craftmark Cable Markers has been in business since 1959. We manufacture all types of cable marking and identification products including tags, markers, signs and Snap On Cable Markers.

Creek Enterprise and Creek Plastics..... 1618

1601 E Monroe
Tecumseh, MI 49286
Tel: 517-423-1218
creekplastics.com

Creek Plastics is a U.S. owned and operated manufacturer of plastic products made for protecting fiber and cable in your telecommunications, CATV, and electrical applications. We produce a wide variety of pipe for multiple applications.

CTIconnect 817

2655 N Ocean Dr Ste 201
Riviera Beach, FL 33404
Tel: 561-295-7899
www.cticonnect.com

Every business today thrives on connectivity—linking with customers, suppliers, employees, and even equipment in new, dynamic ways. That's where CTIconnect excels. We don't just offer products, we offer trust.

CyberPower Systems, Inc. 935

4241 12th Ave E Ste 400
Shakopee, MN 55379
Tel: 952-567-7954
www.cyberpowersystems.com

CyberPower Systems (USA), Inc. is a leading manufacturer of power protection solutions (UPS) systems, power distribution units (PDUs), racks, surge protectors and power accessories.

Cyclomedia Technology, Inc. 719

8215 Greenway Blvd Ste 300
Middleton, WI 53562
Tel: 510-900-5142
www.cyclomedia.com

Cyclomedia provides high-resolution 3D field data and asset analytics, optimizing telecom operations. Using street-level imagery, LiDAR, and automation, we streamline FTTx deployment, pole inventory, and 5G planning—cutting fieldwork by 90%, accelerating projects, and reducing risks.

DANELLA®

Danella Construction, Inc. ...1346

301 Interstate Dr
Archdale, NC 27263
Tel: 336-804-5062
www.danella.com

Danella installs, maintains and supports the nation's infrastructure. We accomplish our mission by investing in the development and success of our employees. Pride in everything we do® is the Danella guiding principle.



Defang Technology

Defang Technology Solutions, LLC 1247

82 Winslow Ln
Irvine, CA 92620
Tel: 469-867-5291
www.defangtech.com

Defang Technology is a leading provider of customizable voice, video, and data connectivity solutions, serving telecom, electronics, broadband, and new energy industries with high-performance products tailored to exceed client expectations at optimized costs.

Dongguan HX Fiber Technology Co., Ltd.1834

Bldg No 2 Gaoli 3rd Rd
Tangxia Town, Dongguan 523710 China
Tel: 86-769-87729980
www.hxfiber.com

DongGuang HX Fiber was established in 2008 integrating R&D, production and sales for fiber optic solutions like indoor/outdoor cables. It is also the biggest armored cable manufacturer in China.

Dura-Line..... 1139

11400 Parkside Dr Ste 300
Knoxville, TN 37934
Tel: 800-847-7661
www.duraline.com

Dura-Line is a leading manufacturer and distributor of high-density polyethylene (HDPE) conduit, accessories, and other connectivity solutions for the telecommunications, transportation, and electrical markets.

DYS Fiber Optic Limited 1213

Bldg 16-17# Zhong Nan High Tech
Industrial Park Shuikou St
Huicheng Dist, Huizhou, Shenzhen
516005 China
Tel: 86-752-2781169
www.dysfiber.com

DYS Fiber Optic, founded in 2009, manufactures passive fiber products in China and Vietnam. Key products include jumpers, cables, and FTTH solutions for data centers and FTTX/FTTA applications.

Emtelle..... 1339

101 Mills Gap Rd Unit A
Fletcher, NC 28732-8548
Tel: 828-709-7970
www.emtelle.com

Emtelle is a leading global manufacturer of pre-connectorized, blown fiber cable, and ducted network solutions. With manufacturing operations in the UK, Germany, UAE, Denmark and the USA, we are committed to excellence and innovation.

Enginuity Communications..... 1233

3545 Stern Ave
St. Charles, IL 60174
Tel: 800-980-3266
www.enginuitycom.com

Enginuity designs and manufactures connectivity solutions for modern high-speed networks. We serve telecom and broadband companies whose goal is to provide reliable communications and information to their customers.

Esri..... 1632

380 New York St
Redlands, CA 92373
Tel: 909-793-2853
www.esri.com/telecom

Esri applies "The Science of Where" to unlock data's full potential in every telecommunication organization. We continue to pioneer real-world problem solving using geographic information systems (GIS).

ETA International..... 535

5 Depot St
Greencastle, IN 46135
Tel: 765-653-8262
www.etai.org

The Electronics Technicians Association, International, Inc. (doing business as ETA® International), is a not-for-profit 501(c)(6) trade association that serves technology-related industries by providing accredited individual certifications per the ISO 17024 standard for certification bodies.

Excel Utility Contractors..... 718

18549 US Hwy 66
Pacific, MO 63069
Tel: 636-257-7833
www.excelutility.com

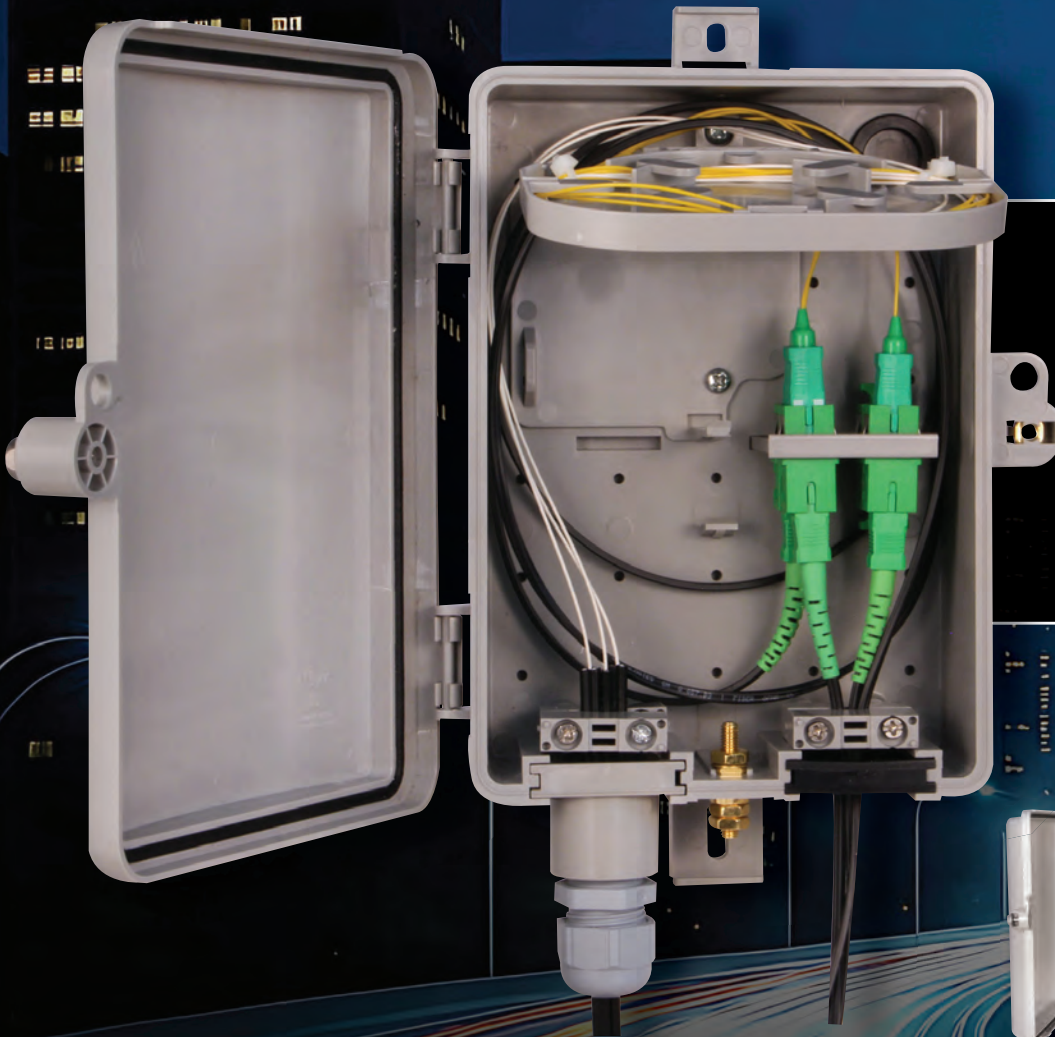
Excel Utility Contractors is a full-service utility contractor based in Missouri with the ability to provide services across the United States. We provide services in the telecommunications, power, water, gas, and government sectors.

Express-Tek..... 617

1127 International Pkwy #293
Fredericksburg, VA 22406
Tel: 540-752-6691
express-tek.com

Since its inception in 2002, Express-Tek has gained the reputable title "Experts in Telecommunication" providing top-tier engineering, design, permitting, and construction services to internet service providers and hyperscalers around the country.

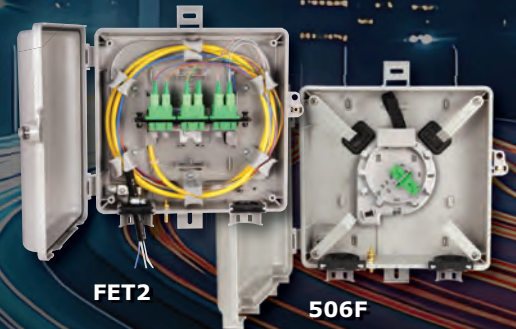
THE NEXT GENERATION IN FIBER ENCLOSURES IS HERE



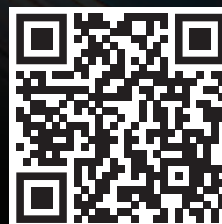
The **505F Series** sets a new standard in versatility—merging patch and patch-and-splice functionality with the advanced features of Tii's 506F and FET2 Series, all in a smaller, space-saving design.

BIG CITY, SMALL SPACE

- ✓ DESIGNED FOR SMALL MDU SPLICE APPLICATIONS
- ✓ ALL THE FEATURES OF FET2 OR 506F SERIES ENCLOSURES RE-IMAGINED INTO A SMALLER UNIT
- ✓ EASY TO INSTALL



Connect with us at sales@tiitech.com
or at **ISE Expo 2025 Booth 1223**



tii technologies

www.tiitech.com



Better FTTx, Better Life.

FCST Co., Ltd. 1544

Room 402 Block A #2816
Baoshan, Shanghai 200441 China
Tel: 86-187-20624696
www.fcst.com

At FCST, we have manufactured top-quality microduct connectors, microduct closure, telecom manhole chambers and fiber splice boxes since 2003. Our products boast superior resistance to failure, corrosion, and are designed for high performance in extreme temperatures.



Feature Route Maps 522

126 Meriden Dr
Hockessin, DE 19707
Tel: 302-287-1670
feature routemaps.net

Feature Route Maps (FRM) is a groundbreaking solution born from real-world utility industry expertise, combining the insights of its creator and the collective experience of industry veterans across both client and contractor roles.

Fiber Broadband Association 1148

3050 K St NW Ste 400
Washington, DC 20007
Tel: 812-272-9335
fiberbroadband.org

The Fiber Broadband Association is the leading fiber optic trade association representing the complete broadband ecosystem.

FiberFox America, Inc. 1345

375 Sylvan Ave Ste 3
Englewood Cliffs, NJ 07632
Tel: 201-676-2472
www.fiberfoxamerica.com

Our quality, rugged durability, and acceptance by many of the leading market segment companies globally have established FiberFox as the premier choice in fusion splicing technology.

Finley Engineering 613

104 E 11th St
Lamar, MO 64759
Tel: 800-225-9716
finleyusa.com

Finley partners with broadband and energy clients to design and build future-ready networks. From feasibility and funding to construction and beyond, we're with you at every step, engineering solutions that last and relationships that matter.

Fremco USA 1348

5126 S Royal Atlanta Dr
Tucker, GA 30084
Tel: 770-910-5010
fremco-usa.com

Fremco USA is a subsidiary of Fremco A/S in Denmark, specializing in the manufacturing and sale of fiber blowing machines for the US market. Since 1996, Fremco has been the leader in fiber blowing technology, developing and producing high-quality machines known for their performance.



Fulcrum 716

548 Market St PMB 14914
San Francisco, CA 94104-5401
Tel: 901-337-1104
www.fulcrumapp.com

Fulcrum is a no-code field data collection platform that streamlines inspections, audits, and reporting—helping teams capture accurate data, ensure compliance, and gain real-time insights to work faster and smarter.

GCG Telecom & Broadband 727

8550 W Bryn Mawr Ave Ste 400
Chicago, IL 60631
Tel: 877-424-9473
www.gogcg.com

GCG Telecom & Broadband simplifies complex infrastructure projects with reliable solutions in broadband, wireless, fiber, 5G, and power. We offer hands-on support, nationwide distribution, and services that keep your projects on time and on budget.

General Machine Products (KT), LLC 1028

3111 Old Lincoln Hwy
Trevose, PA 19053
Tel: 215-260-3153
www.gmptools.com

GMP specializes in tools for telecommunications, power utilities, and cable TV industries. Renowned for cable lashing machines and fiber equipment, GMP drives innovation in electrification and remains a trusted leader in telecom and utility industries.



Prysmian is proud to make award-winning Sirocco™ Fiber Optic Cabling right here in Claremont, North Carolina.



Because where it's made **matters.**



Scan to learn more about our BEAD-compliant optical fiber & cabling solutions:



GEOGRAPH

Technologies, LLC 1144

103 W Main St
Easley, SC 29640
Tel: 800-674-4803
www.geograph.tech

GEOGRAPH is a premium GIS software supplier that transforms your complex network data into a management tool everyone in your organization can use and revolutionizes the way you manage fiber mapping.

GlasMasters 1839

8873 Western Way
Jacksonville, FL 32256
Tel: 904-358-1700
www.glasmasters.com

GlasMasters manufactures durable and beautiful underground enclosures (polymer concrete, fiberglass, HDPE) designed to protect utility infrastructure such as fiber optics and communications. Our highly-customizable products (cable racking, pulling eyes, cutouts) offer long-term strength and resistance to the elements.



GMFTEL, LLC 634

203 Main St Ste 202
Lake Dallas, TX 75065
Tel: 940-765-0158
www.gmfotel.com

GMFTEL provides a full range of ODN products solutions for FTTH deployment. Our products include street cabinet, splicing closure, PON box, terminal box, ODF, PLC splitter, faceplate, patch cord, pigtail, adapter, connector, cabling assembly hardware, etc.



Go!Foton 1331

28 Worlds Fair Dr
Somerset, NJ 08873
Tel: 732-469-9650
www.gofoton.com

Go!Foton is at the forefront of advanced optical and photonics innovation, developing leading fiber connectivity for central office, data center, and outside plant broadband networks.

Graybar 1413

1370 Timberlake Manor Pkwy
Chesterfield, MO 63017
Tel: 314-573-9200
www.graybar.com

Graybar, a Fortune 500 corporation, is a distributor of electrical, industrial, automation and connectivity products, and we specialize in supply chain management and logistics services. With 350 distribution facilities, we stock and sell products from thousands of manufacturers.

Great Lakes Data

Racks and Cabinets 1639

4193 Rte 6N
Edinboro, PA 16412
Tel: 412-290-4496
greatcabinets.com

We specialize in American-made, NEMA enclosures for IT equipment storage and protection. Since 1985, we've delivered innovative solutions that improve airflow, power, cable management, and security for telecommunications and network deployments worldwide.



Hammond Manufacturing .. 1047

475 Cayuga Rd Ste 100
Cheektowaga, NY 14225
Tel: 519-822-2960
www.hammondmfg.com

For more than 100 years and four generations, customers who have required unsurpassed performance, wide selection and durability for power distribution, rack mounting, enclosures, and cases, have relied on the Hammond brand.



Hexad Solutions

Group 639

100 Parkgate Ext Ste 201
Tupelo, MS 38801
Tel: 662-350-0316
www.hexadsolutions.com

Founded in 2021, we deliver expert telecom engineering, design, permitting, and construction services. With a seasoned team, global reach, and people-first culture, Hexad ensures high-quality, on-time delivery. We're headquartered in Mississippi with growing U.S. and global teams.

Hexatronic 833

4040 Finn Way Ste 240
Lexington, KY 40517
Tel: 763-760-0921
www.hexatronic.com/en-us/fiber-solutions

Hexatronic offers various passive fiber system solutions and products for FTTH, metro, access and transportation networks. Our complete end-to-end systems utilize blown fiber technology and include all components needed to build the entire cabling infrastructure.

HFCL

HFCL, LTD...... 939

L-35-36-37 Industrial Area Phase-II
Verna Electronic City, Verna, Salcete,
GOA 403722 India
Tel: 91995311
www.hfcl.com

HFCL is a leading technology company delivering next-gen digital networks through sustainable manufacturing, with innovative optical fiber and 5G solutions. Globally trusted by telecom operators, enterprises, and governments for performance, reliability, and customized solutions.

HS SPRINGSTEEN ENTERPRISE 842

6F Bank of America Tower
12 Harcourt Rd
Central Hong Kong China
Tel: 85-268-801302
www.hsspringsteen.com

HS SPRINGSTEEN is a leading manufacturer of power utility and telecom accessories in China, which has a global network of sales and manufacturing facilities for serving users worldwide. Headquartered in HK, China, we also have sales offices and operation facilities in Malaysia and America.

Hubbell, Inc. 1739

40 Waterview Dr
Shelton, CT 06484
Tel: 475-882-4800
www.hubbell.com

Hubbell Incorporated is a leader in manufacturing high-quality critical infrastructure solutions strategically aligned around clean energy megatrends, including grid modernization and energy efficiency.

Huizhou Fibercan Industrial Co., Ltd. 1250

No 1 Industrial Ave
Longhua Town, Boluo, Huizhou,
Guangdong 516122 China
Tel: 86-752-6909990
www.fibercan.com.cn

Huizhou Fibercan Industrial Co.,Ltd. is a world-leading manufacturer and professional supplier of optical fiber

communication products, providing solutions, and OEM/ODM services. We are a one-stop factory providing a full range of products.



Leased Lines sunseting?
High cost to transition to IP?
Wireless fees too high?
Need to retain existing equipment?

Visit Sunhillo at ISE Expo Booth 747

Sunhillo has developed a simple cost-effective Solution to utilize existing Ethernet to maintain your system without an upgrade to your control Infrastructure.

- SEL Compatible
- SEL Mirrored Bits Supported
- Low Latency <2ms per unit
- Power over Serial

Simply remove the existing serial modem cable and attach the Sunhillo Asbury to the device and an Ethernet cable to your existing switch.



www.Sunhillo.com

Hyesung Cable and Communication, Inc.1629

5F Lasung Bldg 59
Naruteo-ro Seocho-gu
Seoul, 06525 Korea (South)
Tel: 82-2-707-0230
www.hscnci.com

Hyesung, with 30+ years of expertise in communication cables, offers competitively priced, high-quality products tailored to your project needs. Our innovative designs ensure optimal installation and performance, meeting industry standards without compromising quality.

ICEcube, Inc.1721

141 Wilson Ave
Greensburg, PA 15601
Tel: 724-837-7600
icecube.com

ICEcube offers climate control, cabinets, enclosures, and racks that meet UL NEMA standards. Our experts provide turn-key solutions, minimizing startup time and optimizing your equipment setup.

Incab America, LLC 717

900 Nolen Dr
Grapevine, TX 76051
Tel: 469-321-5581
incabamerica.com/optical-cable

Incab is one of the largest manufacturers of the world's finest fiber optic cables. Our product range includes: OPGW, ADSS, FTTH, outdoor and indoor cables, fire rated cables, sensing cables, and special cables for all applications.

INNO Instrument America, Inc. 1533

1850 Crown Dr Ste 1109
Dallas, TX 75234
Tel: 214-484-3627
www.innoinstrument.com

We're a global supplier of telecommunications equipment. Our flagship products and solutions include ARC fusion splicers, high precision cleavers, and OTDRs, helping clients maximize fiber optic investments through installation, monitoring, and troubleshooting optical networks.

Intelligent Mapping 1832

151 Saint Andrews Ct Ste 400
Mankato, MN 56001
Tel: 214-336-6489
www.intelligentmapping.com

Intelligent Mapping's PLUM Device is pulled through underground conduit and provides survey grade XYZ, bend radius and a 3D map of the asset.

IQGeo 1419

1670 Broadway Ste 2215
Denver, CO 80202
Tel: 720-577-4732
www.iqgeo.com

Telecommunication, fiber, and utility operators are "Building Better Networks" with IQGeo's geospatial management software. This flexible modeling fosters dynamic tasks and mobility, connecting the office and field and empowering operators to develop future-ready networks.

J&H American Enclosures, LLC 730

8328 E Hwy 67 Bldg A
Alvarado, TX 76009
Tel: 817-790-2900
www.jhamericanenclosures.com

J&H American Enclosures is a provider of underground enclosures, telecommunications, fiber and electrical equipment.

Jameson Tools1053

1451 Old N Main St
Clover, SC 29710
Tel: 800-346-1956
jamesontools.com

Since introducing the first fiberglass poles to the telecom industry in 1956, Jameson has become a leading provider of telecommunication cable installation and maintenance tools for professional installers throughout the United States and abroad.

Jonard Tools1020

200 Clearbrook Rd Ste 128
Elmsford, NY 10523
Tel: 914-793-0700
jonard.com

Jonard Tools®, founded in 1958, manufactures tools for the telecom, CATV, fiber optic, home automation, security and alarm, and electrical markets. We design and engineer patented products by utilizing customer partnerships to create innovative solutions for industry needs.

KGPCo1125

3305 Hwy 60 W
Faribault, MN 55021
Tel: 507-334-2268
www.kgpcoco.com

KGPCo is a supply chain logistics supplier and systems integrator providing solutions for network builds—including passive OSP and active electronics required to build and maintain your middle or last mile network.

KNET AMERICAS, Inc.1420

1 Bridge Plaza Ste 675
Fort Lee, NJ 07024
Tel: 646-897-9329
www.e-knet.com

KNET manufactures microduct fiber pathway and offers a broad range of connectivity products to meet the many different deployment scenarios. KNET is ISO 9001/TL9000 certified and has Telcordia GR 3155 certified products.

Korea Optron Corporation... 739

142 Nanosandan-Ro Nam-Myeon
Jangseong-Gun, Jeollanam-Do 57248
Republic of Korea
Tel: 82-(0)62-9737771
www.koreaoptron.co.kr

Korea Optron Corporation is a well-known manufacturer of fiber optic products including fiber cables and MEMS. We have been supplying high level quality and cost-effective fiber optic products around the world since 1997.



Kramer Service Group..... 626

PO Box 71 W14364 Railway Ave
Weyerhaeuser, WI 54895
Tel: 715-642-0180
www.kramerservicegroup.com

Legrand..... 1352

6 Orchard Rd Ste 150
Lake Forest, CA 92630
Tel: 800-590-9535
approvednetworks.com

Approved Networks is a Legrand's data, power, and control division brand. We've provided high-performance optical solutions to a global network of Fortune 500 enterprises, data center, and service provider partners for over 30 years.

LEOCH® Battery Corporation..... 1733

10350 Brockwood Rd
Dallas, TX 75238
Tel: 972-688-6988
leochlithium.us

LEOCH® is a leading manufacturer in stored energy solutions, offering one of the most comprehensive portfolios in the industry. Patented designs include lithium, pure lead, high temperature VRLA AGM, hybrid gel, tubular flooded and more.



Last Mile Solutions for FTTH

Superior Performance Fusion Splice-On Hardened Connectors Installed Onsite

Lower Total Cost of Ownership through Reduced Inventory,
Reduced Rework Rates & Improved Customer Satisfaction.



All-In-One
Fusion Splice Tech



Rugged Drop Cables



Fusion Splice-On
Optitap® Connectors

For more information, please contact
serviceprovidersales@uclswiftamericas.com

UCL Swift
Carrollton, TX
www.uclswiftna.com

Light Brigade..... 921

835 N Central Ave D-132
Kent, WA 98032
Tel: 717-578-3990
www.lightbrigade.com

For over 35 years Light Brigade has offered worldwide, state-of-the-art, instructor-led, certified fiber optic training courses and hands-on skills training for industry professionals. Our courses range from basic fiber optics to network design.



Lighttera..... 1229

2000 NE Expressway
Norcross, GA 30071
Tel: 770-798-5555
www.lighttera.com

Lighttera is a global leader in optical fiber and connectivity solutions, delivering innovative technologies, which provides high-performance solutions that enable faster, more reliable, and more sustainable connections for businesses, communities, and industries worldwide.



Line-Scape 1447

500 N Akard Ste 3700
Dallas, TX 75201
Tel: 214-732-7261
www.line-scape.com

Line-Scape delivers visualized digital utility locates that enhance excavation safety, reduce damage, and streamline communication—while screening tickets to eliminate unnecessary field work, lower costs, and improve compliance across the 811 process.

LYNDDAHL

Telecom America 1334

408 Brook St
Belmont, NC 28012
Tel: 770-298-5347
lynddahltelecomamerica.com

LYNDDAHL Telecom America develops, manufactures, and delivers complete pipe solutions for fiber optic installations. All our solutions are completely customizable and tailored to each customers' specific needs.

LynkFast..... 526

11871 E 33rd Ave Unit B
Aurora, CO 80010
Tel: 970-646-2706
www.lynkfast.com

We specialize in pre-terminated structured cabling solutions designed to streamline installation and enhance network flexibility. Our solutions help reduce labor costs, cable waste, and deployment time while delivering a future-ready network foundation.



LYNN 1027

283 Sharts Rd
Springboro, OH 45066
Tel: 888-235-2097
thinklynn.com

LYNN delivers high-quality, customer focused network and FTTx solutions with fast shipping, custom cabling, and field-ready products—backed by Corning Gold-approved lines and over 60 years of communications industry experience.

MacLean

Network Solutions 1325

1600 Abby Dr
Naperville, IL 60563
Tel: 630-913-2034
www.macleannetworksolutions.com

MacLean Network Solutions is your industry leader for outside plant hardware with a full line of aerial construction hardware, drop hardware, bonding and grounding hardware, screw anchors, automatic connectors, and Buy America hardware.

Matrix-NDI..... 1535

171 Cheshire Ln N Ste 700
Plymouth, MN 55441
Tel: 763-475-7476
www.matrix-ndi.com

Power your business growth with a robust IT infrastructure. Matrix-NDI creates the essential foundation for AI, ML, cloud, and automation initiatives. By modernizing your outdated systems and standardizing operations across locations, we ensure your business can adopt innovation and be more competitive.



Maverick Corporation 1520

One Westinghouse Plaza Ste D6
Boston, MA 02136
Tel: 617-361-6700
www.maverickcorporation.com

Maverick, based in Boston, delivers full-service engineering, construction, and operation of power and communications networks for governments, utilities, and industry clients across the U.S., Europe, and beyond.



MaxCell.....840

600 Plum Creek Dr
Wadsworth, OH 44281
Tel: 412-454-2890
www.maxcell.us

MaxCell innerduct solutions help you expand OSP and ISP capacity, preserve space for future bandwidth requirements, and reduce total project costs.

Michels Underground Cable, Inc. 1318

817 Main St
Brownsville, WI 53006
Tel: 920-924-4300
www.michels.us

Michels Underground Cable, Inc. combines experience and equipment to build underground power transmission, power distribution, renewable and communication cable networks.

Millennium 1328

2121 Hobbs Dr
Delavan, WI 53115
Tel: 262-806-0333
www.mymillennium.us

Founded in 2004, Millennium has redefined the broadband industry by helping clients be fast-to-market by providing enhanced design, financial guidance and loans, rental equipment, and materials management. Millennium employs almost 200 people in 17 dedicated locations across America.

Milwaukee Tool1620

13135 W Lisbon Rd
Brookfield, WI 53005
Tel: 262-957-0322
www.milwaukeeetool.com

We invest the time to work side-by-side with real users to understand the demands of a constantly changing workplace and how we can best deliver solutions for a safer, more productive jobsite.

Molex 635

2222 Wellington Ct
Lisle, IL 60532
Tel: 651-245-7100
www.molex.com

Molex makes a connected world possible by enabling technologies that transform the future and improve lives. With a presence in more than 40 countries, we offer a complete range of connectivity products, services and solutions.

Mountain Ltd..... 1525

52 Farm View Dr #201
New Gloucester, ME 04260
Tel: 800-322-8627
mountainltd.com

Since 1979, Mountain Ltd. has successfully created and supported turnkey engineering solutions for traditional and wireless telecom providers across the United States. We are a national leader in the telecom industry.

MP NEXLEVEL, LLC..... 638

500 County Rd 37 E
Maple Lake, MN 55358
Tel: 910-514-0222
www.mpnexlevel.com

MP is a nationally recognized full service utility contracting company that was founded in 1973. We are active in 32 states across the United States.

Multilink, Inc..... 1217

580 Ternes Ln
Elyria, OH 44035
Tel: 440-366-6966
www.gomultilink.com

Multilink is an industry-leading designer, developer, and manufacturer of products serving the telecommunication and ITS/Traffic industries. We've been supplying our customers with innovative products that improve the way people communicate since 1983.

National OnDemand, Inc..... 912

445 S Main St
Burlington, NC 27215
Tel: 877-263-1052
www.nationalondemand.com

National OnDemand, Inc. is a communications and utilities infrastructure provider delivering service solutions to the fiber, wireless, energy and technology sectors in the U.S. We provide full turnkey fiber construction and last mile solutions—on demand.

NDS, Inc. 1523

21300 Victory Blvd Ste 215
Woodland Hills, CA 91367
Tel: 617-306-9329
www.ndspro.com

NDS is a leading manufacturer of high-quality, durable outdoor solutions for stormwater management, landscape irrigation, and pipe connections including fittings, valves, clamps, and more. Our portfolio of products works in many environments, from residential and commercial to industrial and municipal properties.

NEPTCO 816

375 University Ave
Westwood, MA 02090
Tel: 781-332-0700
chasecorp.com

Chase protects utility infrastructure with tapes, coatings, linings, and sealants that offer corrosion protection, waterproofing, and traceability. Our Trace-Safe solution detects underground conduits and pipelines, while MULETAPE prevents damage to telecom pipes, ensuring the longevity of fiber installations.

Netceed 640

225 Raritan Center Pkwy
Edison, NJ 08817
Tel: 833-878-2267
www.netceed.com

Netceed delivers end-to-end network solutions with unmatched telecom expertise, advanced logistics, and customized services. From core to edge, we redefine what a global materials distributor and value-added partner can do for your network.



Netcon, LLC 1624

601 Brickell Key Dr Ste 901
Miami, FL 33131
Tel: 786-408-6712
netconamericas.com

With nearly 30 years of experience, Netcon Americas delivers innovative telecom and critical infrastructure solutions, combining engineering, automation, and software to build smarter, more efficient, and future-ready network operations.

New River Electrical Corporation 534

15 Cloverdale Pl
Cloverdale, VA 24077
Tel: 614-891-9132
www.newriverelectrical.com

Choosing New River Electrical is the most powerful choice for powerful results. We are a proven electrical construction company providing customers with unmatched expertise, safety, and professionalism.



New Venture Telecom 631

4266 E 43rd St
North Little Rock, AR 72117
Tel: 501-771-2269
newventuretelecom.com

New Venture Telecom is a commercial communication and utility services company specializing in the deployment of DC power and network equipment in new and existing applications.

NewBasis 1038

2626 Kansas Ave
Riverside, CA 92507
Tel: 951-787-0600
www.newbasis.com

NewBasis manufactures pads and belowground enclosures for telecommunications, electrical, CATV, water, traffic, lighting, and industrial applications. Based in Riverside, CA, we are committed to bringing the most advanced materials, practices, and products to the infrastructure market.



NWS 1045

2601 Greengate Dr Bldg A
Greensboro, NC 27406
Tel: 770-316-8439
nwsnext.com

Founded in 2012, NWS is a leading distributor of digital infrastructure products and solution services, specializing in broadband, DAS/private networks, fixed wireless access, site solutions, carrier networks, and test and measurement.



OCIUS-X 925

GÄVLEGATAN 16 Box 6019
Stockholm, SE 102 31 Sweden
Tel: 46-76-6308115
www.ociusx.com

OCIUS-X is a construction management platform built for fiber and utility contractors. We streamline field data capture, progress tracking, invoicing, and as-built—helping contractors reduce errors, improve communication, and accelerate closeouts with real-time visibility across every active project.

Oldcastle Infrastructure 1313

7000 Central Pkwy Ste 800
Atlanta, GA 30338
Tel: 800-899-8455
oldcastleinfrastructure.com

Oldcastle Infrastructure's leading solutions protect and connect communications networks. Duralite, Primex, and Carson brands advance FTTH and home networks to create the best-connected living units. With BEAD-compliant manufacturing capabilities, we solve challenges and transform communities.



OMNI (Opti-Com Manufacturing Network)..... 712

259 Plaque St
New Orleans, LA 70123
Tel: 504-736-0331
www.omni-opti.com

OMNI specializes in manufacturing conduit including PVC, HDPE, Micro-duct and Multi-duct. We also supply everything you need to place and protect your cable and fiber. We have been a trusted name in this industry for 40 years.

Ooma 1545

525 Almanor Ave Ste 200
Sunnyvale, CA 94085
Tel: 866-343-7929
www.ooma.com

Ooma creates powerful connected experiences for businesses, consumers and service providers, delivered through smart cloud-based communications platforms and services.



Panduit..... 1513

18900 Panduit Dr
Tinley Park, IL 60487
Tel: 708-532-1800 x81931
www.panduit.com

From the data center and office to the plant floor and production line, Panduit provides complete solutions, optimized to work together so you get the most out of your infrastructure investment.

Paragon Navigator, Inc..... 731

Burnt Poplar Rd
Greensboro, NC 27409
Tel: 713-779-6760
www.paragonnavigator.com

We're a fast-growing provider in fiber optic cables and connectivity solutions. We engineer and deliver

Round handholes? What, no way! Yes way!

Why store your round fiber coils in a rectangular vault?

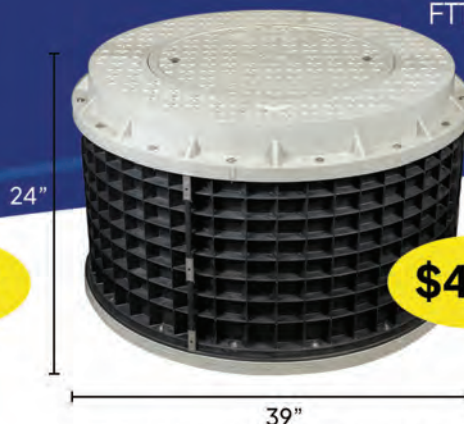
Our AXS-900R450-CO and AXS-900R900-CO Vaults are crafted from lightweight, yet high strength materials, featuring a Tier 22 rating, and are available in 24" and 41" deep models.

These Vaults can accommodate everything from FTTH builds to high-fiber-count backhaul builds. Don't settle for anything but the best for your projects.



\$549

AXS-900R900-CO



\$449

AXS-900R450-CO



In stock! Purchase today!



(920) 328-1020



info@raddnetwork.com



RaDDNetwork.com



high-performance, durable products for robust networks. Our commitment empowers partners to build reliable infrastructure, connecting communities with superior performance.

PLP 1013

**660 Beta Dr
Cleveland, OH 44143
Tel: 440-461-5200
www.plp.com**

You can count on PLP® to provide high-quality closures and solutions that meet the rigorous demands of today's modern communications networks. We serve all segments of the communications industry, including telecommunications network operators, cable television and broadband service.

PlugIn Optics 738

**4765 NW 103rd Ave Bay 21
Fort Lauderdale, FL 33351
Tel: 754-224-6963
www.pluginoptics.com**

We use a consultative approach to fiber optic network operators' everyday challenges. With the agility to quickly source, design, and implement solutions, and over 30 years of experience, we build carrier grade solutions that make sense for our customers.

Plumettaz America Corporation 1146

**225 Thrasher Pike
Soddy Daisy, TN 37379
Tel: 423-212-1900
plumettazamerica.com**

We are a world leading manufacturer in cable placing equipment, offering fiber optic cable jetting machines as well as energy cable pushers and underground pullers.

Power & Tel 1312

**200 Keough Dr
Piperton, TN 38017
Tel: 901-866-3300
www.ptsupply.com**

Since 1963, Power & Tel's extensive distribution system has provided an effective way for service providers and contractors to get the wide range of products needed to build and maintain communication networks.

Powerline Hardware 920

**7485 Fullerton St
Jacksonville, FL 32256
Tel: 904-288-9880
powerlinehardware.com**

Powerline Hardware (PLH), a trusted name in electric utility for over 30 years, now serves the telecom industry. PLH delivers reliable solutions of aerial hardware, grounding & anchoring, connectors and bonding products.

PowerTec Solutions International 1423

**480 Reasonover Dr
Franklin, KY 42134
Tel: 270-813-1110
www.powertecsolutions.net**

PowerTec Solutions International (PSI) is a privately-held technology design and manufacturing company focused on providing custom DC power, UPS, and other standby power solutions to compliment global FTTx, wireline and wireless applications.



Priority Wire & Cable 1444

**1800 E Roosevelt Rd
Little Rock, AR 72206
Tel: 800-945-5542
www.prioritywire.com**

Priority Wire & Cable is a modern manufacturer with the majority of our sales being Priority branded products. We also fill out our product offering with specialty wire and cable products, sold generically or under other industry leading brand names.

Prysmian 1439

**4 Tennessee Rd
Highland Heights, KY 41076
Tel: 803-951-4800
na.prysmian.com**

Prysmian North America is a benchmark player in energy transition and digital transformation. Our strategy is aligned with the main market drivers by developing resilient, high-performing, sustainable, and innovative cable systems for the transmission, power grid, electricity and digital solutions segments.



Quest Controls 1120

**208 9th St Dr W
Palmetto, FL 34221
Tel: 941-729-4799
questcontrols.com**

Quest Controls offers hardware and software solutions for critical facilities. Our remote monitoring presents alarms and monitored data to predict issues, preventing catastrophic events and identifying savings otherwise impossible to observe on a site-by-site basis.

R&M USA, Inc...... 612

225 Hammond Ave
Fremont, CA 94539
Tel: 408-945-6626
www.rdm.com

R&M develops, manufactures and sells infrastructure solutions for communication and data networks. Our connectivity solutions are used in telecommunication, FTTH, FTTA, LAN, and data center networks.

RaDD Network Solutions, Inc...... 1823

1010 Centennial St
Green Bay, WI 54304
Tel: 920-328-1020
www.RaDDNetwork.com

RaDD Network Solutions is a full solution provider in the telecommunication/broadband industry, providing innovative products and application engineering services to its distributors and customers in North America.

Rainbow Technology Corp. 1621

261 Cahaba Valley Pkwy
Pelham, AL 35124
Tel: 205-733-0333
rainbowtech.net

Our mission is to market specialty products and services to the utility and industrial markets, nationally and internationally. We are an important vendor to the telecommunications, electric power, other key utilities, OEMs, contractors, and distributors.

Raycap 713

806 WClearwater Loop
Post Falls, ID 83854
Tel: 208-777-1166
www.raycap.com

Raycap is a global solutions company that manufactures and supplies advanced products for mission-critical infrastructure applications. We have years of experience providing products

for power generation, transmission and distribution systems, and wireless and fixed-line telecom networks.

Reef Industries, Inc...... 1445

9209 Alameda Genoa Rd
Houston, TX 77075
Tel: 713-507-4260

terratape.com/products/underground-marking-tape/communication-warning

Terra Tape® underground warning tape is ideal to protect against accidental dig-ins of fiber optic cables, telephone lines, and CATV lines. Terra Tape® is an extrusion-laminated underground warning tape, offered in both detectable and non-detectable.

Duct Bank Construction
Communication Networks
Underground Electric T&D
Renewables
Conventional & On-Rail Plowing
Preconstruction Services

WE DO THAT ... & MORE



**Above.
Beyond.
Below.**

MICHELS®

Michels.us

BOOTH
1318

Visit us at the
2025 ISE Expo

EOE/AA/M/F/D/V

Render Networks, Inc.1628

2000 S Colorado Blvd
Bldg 1-2000 #1129
Denver, CO 80222-7910
Tel: 613 9131 9800
www.rendernetworks.com

Render is transforming how critical infrastructure gets built. Our AI-first, field-proven construction management platform replaces manual processes with intelligent automation and real-time visibility, eliminating inefficiencies and optimizing deployment for faster, more predictable outcomes.

Roxtec USA.....1829

1140 N 129th E Ave
Tulsa, OK 74116
Tel: 800-527-4769
www.roxtec.com

Roxtec is a world-leader in sealing solutions for cable and pipe transits.

SeeMeSign.....1151

51 W State St Ste 122
Orem, UT 84057
Tel: 801-860-6675
seemesign.com

SeeMeSign automates contract verifications using AI and video technology. We replace traditional call centers by recording signees as they verbally confirm agreements, recognizing responses, and verifying IDs—streamlining compliance, reducing costs, and enhancing fraud prevention.

Smarty538

1476 Sandhill Rd
Orem, UT 84058
Tel: 801-877-5779
www.smarty.com

Eliminate service gaps, reduce installation errors, and optimize infrastructure placement with Smarty's industry-leading address verification and rooftop geocoding. Build smarter coverage maps and deliver exceptional service while minimizing costly deployment mistakes.



SMG Trailers.....1728

114 Centric Dr
West Monroe, UT 71225
Tel: 318-512-1711
www.smgtrailers.com

At SMG Trailers, our focus is on delivering exceptional quality and functionality with every trailer we build. Rooted in a tradition of craftsmanship, each model showcases our commitment to excellence.



Southwire®
WE DELIVER POWER...RESPONSIBLY

Southwire.....1638

1 Southwire Dr
Carrollton, GA 30119
Tel: 262-455-8028
www.southwire.com

Southwire Company, LLC, and its subsidiaries, provide electrical products and solutions including building wire and cable, metal-clad cable, utility products, portable and electronic cord products, and OEM wire products.

Sumitomo Electric Lightwave.....1033

201 S Rogers Ln Ste 100
Raleigh, NC 27610
Tel: 919-541-8100
sumitomoelectriclightwave.com

Sumitomo Electric Lightwave is a recognized leader in the innovation, design, development, and manufacturing of advanced and integrated end-to-end solutions for data center, enterprise, and communication network customers.



Sunhillo747

444 Kelley Dr
West Berlin, NJ 08091
Tel: 856-767-7676
www.sunhillo.com

Sunhillo's Asbury solves your data connection needs moving from expensive serial and TDM lines to cost-effective Ethernet networks. The Asbury sustains legacy equipment, bridging serial lines over Ethernet and supports PoE or power over serial.



SUPERIOR ESSEX®

Superior Essex Communications.....1119

5770 Powers Ferry Rd NW Ste 400
Atlanta, GA 30327
Tel: 770-657-6000
superioressexcommunications.com

Superior Essex Communications is a leader in the telecommunications industry, specializing in innovative and sustainable solutions. We manufacture and distribute high-performance copper and fiber optic cables, design advanced network infrastructures, and promote eco-friendly, energy-efficient technologies.

Takfly Communications Co., Ltd.1717

Takfly Industrial Park, Tongsheng Community, Dalang St
Longhua District,
Shenzhen 518109 China
Tel: 86-755-28106528
www.takfly.com

Takfly is a professional manufacturer of fiber optic products. Our products include MPO/MTP, fiber optic cable, patchcord, pigtail, PLC splitter, CWDM/DWDM, SFP module, PM and high power components.

technetix

Technetix 1724

8490 Upland Dr Ste 200
Englewood, CO 80112
Tel: 720-517-6239
www.technetix.com

Technetix is a market-leading technology company enhancing broadband cable network performance worldwide. Founded in 1990, Technetix is your trusted partner and one-stop source for technology, products and services.

Teel Plastics, LLC 947

1060 Teel Ct
Baraboo, WI 53913
Tel: 608-355-3080
www.teel.com

Teel Plastics is an ISO 9001-certified, US-owned manufacturer of HDPE telecom and electrical conduit,

microduct, and multiduct. Our pipe is manufactured in Baraboo, Wisconsin, in a 430,000+ sq. ft. production facility.

Terra Star, LLC 943

PO Box 663
Rogersville, MO 65742
Tel: 888-95Terra
terrastarpoly.com

Terra Star has over a century of combined expertise in HDPE plastics manufacturing. We manufacture HDPE conduit for the broadband, fiber, telecommunications, utilities, and infrastructure industries.

Terra-Vaults, Inc. 1347

4701 S Edgewood Terrace
Fort Worth, TX 76119
Tel: 682-203-8054
terra-vaults.com

Made in America, Terra-Vaults manufactures high quality polymer concrete and FRP/hybrid vaults for

the telecom and utility industries. Our facility is growing and expanding throughout the U.S. and Canada.

The Galloway Group 1251

5840 Youngquist Rd
Fort Myers, FL 33912
Tel: 239-481-7448
teamgalloway.com

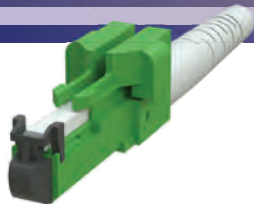
The Galloway Group is empowering telecom and utility projects with premium infrastructure solutions and nationwide distribution

Thermal Edge, Inc. 1522

1800 Hurd Dr
Irving, TX 75038
Tel: 972-580-0200
thermaledge.com

Thermal Edge designs and builds cooling solutions for electrical enclosures. Made in the USA, since day one, and backed by a five-year warranty, our units deliver proven reliability and long-term performance.

FIBER TO THE HOME Innovations That Bring Protection & Performance Together.



LC Shuttered
Connector*



LC Simplex Internal
Shutter Adapter*



SC Simplex Internal
Shutter Adapter*



SC Duplex Internal
Shutter Adapter*

LC & SC Series – Smarter Fiber Connections: Built-in protection for safety and reliability.

The new LC Shutter Connector will feature an integrated shutter, delivering enhanced safety by minimizing the risk of laser exposure during handling or maintenance. Our Internal Shutter Adapter Series is expanding to include an LC Simplex plus SC Simplex and Duplex models. These adapters utilize our proven internal shutter technology to provide safety, protection and a more reliable connection—designed with safety and reliability in mind.

* Preliminary designs



Tii Technologies, Inc. 1223

141 Rodeo Dr
Edgewood, NY 11717
Tel: 631-789-5000
tiitech.com

Tii Technologies has been a pioneering force in the telecommunications industry for over 60 years, consistently delivering cutting-edge fiber and copper solutions that address evolving network demands.

Tilson 1040

16 Middle St 4th Fl
Portland, ME 04101
Tel: 207-591-6427
www.tilsontech.com

Tilson is on a mission to build America's information infrastructure. We are a multi-specialty telecommunications services firm with more than 15 years of experience designing, building, and maintaining telecommunications networks.

TiniFiber 533

1180 Rte 109
Lindenhurst, NY 11757
Tel: 631-768-8973
tinifiber.com

TiniFiber provides transformative, resilient solutions for secure, scalable, and future-proof networks. Providing exceptional performance and reliability for the most demanding environments. We develop high-speed fiber optics, including custom fiber, as well as offering tools and test services.



TKI 838

80 Pine St Fl 24
New York, NY 10005
Tel: 646-405-1017
www.tki-net.com

TKI revolutionizing connectivity from blueprint to bandwidth at scale. Our field-proven, end-to-end software platform is trusted by leading telecom

operators across the globe, ensuring seamless, reliable, and efficient network solutions.

TMC Co., Ltd. 1046

443 Yeongok-Gil, Ipjang-Myeon
Cheonan-si, Chungcheongnan 31026
Republic of Korea
Tel: 82 10 4143 0788
www.tmc-cable.com/en

We are a global leading manufacturer in the areas of marine cables, offshore plants, and optical fiber cables. All the cables are made from our own factory in South Korea.

Toner Cable Equipment, Inc. 746

969 Horsham Rd
Horsham, PA 19044
Tel: 800-523-5947
www.tonercable.com

Toner Cable is the largest single source supplier for television distribution and solutions. We offer a complete plethora of products from the roof to the headend to the TV.



Trident Solutions 1042

7160 N Dallas Pkwy Ste 100
Plano, TX 75024
Tel: 800-527-3295
www.tridentproducts.com

Trident is a total solutions manufacturer for identification and marking products. From aboveground to below the surface, our innovative industrial and commercial safety products are at the frontlines protecting what powers our everyday lives.

Trimm, Inc. 728

112 Franklin Park Dr
Youngsville, NC 27596
Tel: 919-575-6100
www.trimminc.com

Dedicated to providing a quality product that customers can depend on. From small to large amperage applications, Trimm's broad selection of DC powered fuse and breaker panels will provide the solutions you need.

UCL Swift North America ... 1427

3200 Commander Dr Ste 100
Carrollton, TX 75006
Tel: 972-556-0915
uclswiftna.com

UCL Swift NA is a leading manufacturer of fiber optic fusion splicing equipment and broadband last-mile hardware. Our all-in-one fusion splicers and connectors enable on-site cable terminations for FTTH, data center or enterprise applications.



UNDC 846

1250 Sutterville Rd Ste 270
Sacramento, CA 95822
Tel: 916-475-1200
undc.com

Our focus is designing efficient, reliable and cost-effective fiber broadband networks. By offering all OSP engineering services inclusive of FTTH and infrastructure design, MXU pathway creation and OSP construction inspection practices, UNDC is well positioned to help achieve your goals.



UniTek Global Services..... 1539

11817 Crane Ridge Dr
Jackson, MS 39216
Tel: 972-316-6360
unitekglobalservices.com

We provide best-in-class OSP and ISP, planning, design, permitting and project management solutions. With over 80 locations nationwide, we offer reliable, world-class products and services and a highly diversified portfolio of capabilities.

US Conec..... 734

1138 25th St SE
Hickory, NC 28602
Tel: 828-639-0443
www.usconec.com

With over 30 years of proven innovation, US Conec continues to redefine the optical interconnect industry with high-density connectivity solutions for data center structured cabling, public network, onboard interconnect, industrial and military markets worldwide.



Uticom Systems, Inc...... 1729

109 Independence Way
Coatesville, PA 19320
Tel: 610-857-2655
www.uticom.net

Uticom Systems, Inc. engineers, designs and manufactures graphics for harsh environments. Our outside plant specialists provide industry leading durability, improved safety and innovative tags, labels and signs.

**THINK SAFETY.
THINK TERRA TAPE®.**

See you in New Orleans!



Visit us in Booth #1445

UNDERGROUND WARNING TAPES

Protect • Identify • Locate

We protect your underground utilities.

Reef Industries offers underground warning tape for accurately locating and preventing damage to valuable underground utility installations.

Features and Benefits

- Continuous protection, identification & location of your underground utility lines
- Minimal installation costs
- Large selection of stock items available
- Can be custom printed with your company name, logo, phone number and/or message in up to 48 inches wide

TerraTape.com • (800) 231-6074
DIVISION OF REEF INDUSTRIES, INC.



©2025 Reef Industries, Inc. TerraTape is a registered trademark of Reef Industries, Inc. 06/25.



UtiliSource, LLC..... 629

313 N Gladstone Ave
Jonesburg, MO 63351
Tel: 406-855-9311
utilisource.us

UtiliSource offers a variety of services including engineering and design, GIS, construction project management, and compliance-driven utility services (locating, mapping, damage prevention, etc.) as well as utility construction software products.

Velox..... 832

200 Clinton Ave W Ste 110
Huntsville, AL 35801
Tel: 256-217-4339
www.veloxuc.com

Velox brings more than just high-quality construction, seamless project management and engineering expertise to the telecom industry. We pride ourselves on offering peace of mind to each customer who entrusts their fiber network to us.

Vertical Cable..... 735

2885 SW 30th Ave
Pembroke Park, FL 33009
Tel: 954-744-8079
verticalcable.com

Vertical Cable is your one-stop shop for low voltage—keystone jacks, tools, racks, enclosures, and cable. We support fiber and twisted-pair systems. Proud to join ISE EXPO for the first time!

Vertiv 1813

505 N Cleveland Ave
Westerville, OH 43082
Tel: 614-888-0246
www.vertiv.com

Vertiv solves important challenges facing data centers, communication networks, and commercial and industrial facilities with a portfolio of power, cooling, and IT infrastructure solutions and services from the cloud to the edge of the network.

VETRO, Inc. 1422

12 Mountfort St Ste 401
Portland, ME 04101
Tel: 207-221-6627
www.vetrofibermap.com

VETRO empowers network operators with unmatched clarity and control over their fiber networks. Our platform is the system of record for physical network assets, delivering powerful visualization, streamlined operations, and accelerated deployment.



Vikinator..... 929

162 S Pinnacle Dr
Chicago, IL 60446
Tel: 815-293-6657
www.vikinator.com

Vikinator provides energy-efficient solutions for cooling, powering and protecting your critical infrastructure.



Vitrui Software..... 1519

555 17th St Ste 1500
Denver, CO 80202
Tel: 813-230-6523
vitruisoftware.com

Vitrui Construction Management Software is transforming the way teams plan, manage, and execute complex construction projects with a single, powerful platform.

Vivax-Metrotech..... 826

3251 Olcott St
Santa Clara, CA 95054
Tel: 408-734-1400
www.vivax-metrotech.com

We develop and manufacture products for buried utility locating, fiber optic cable locating, ferrous metal detection, coating analysis and performing ACVG surveys on cathodic protected pipes, finding sheath to ground faults on cables, and much more.

Wesco..... 1032

800 Airport Rd
Annville, PA 17003
Tel: 888-644-6075
www.wesco.com/us/en/industries/utility-and-broadband/broadband-and-fttx.html

With 70+ years of experience, Wesco delivers 24/7 connectivity through advanced technologies, creative supply chain strategies, and technical expertise—helping organizations build secure, resilient, and future-ready networks.

Westell Technologies, Inc..... 1529

750 N Commons Dr
Aurora, IL 60504
Tel: 630-898-2500
www.westell.com

Westell's comprehensive communications network solutions expand cell site coverage, optimize fiber, copper and hybrid network deployments, increase system capacity, and protect network equipment—reducing operating costs and improving overall network performance.

Western Pacific Telecommunications..... 821

4147 Avenida de la Plata
Oceanside, CA 92056
Tel: 760-509-4417
www.wptele.com

Western Pacific Telecommunications designs and manufactures BABA compliant outside plant related products used in the construction and maintenance of telecom fiber optic networks.

Yuyao Hejor Communication Equipments Co., Ltd. 623

NO 188 Shuangherb Rd Chengdong Industrial Park
Yuyao, Zhejiang 315400 China
Tel: 86-574-62652998
www.cnhejor.com

We specialize in ODN products, R&D, manufacturing, and sales. Based in China, we offer fiber optic boxes, closures, and connectors, with 30+ patents and Tell certification, serving Europe, America, and Southeast Asia.



Zyxel Communications, Inc..... 1518

1130 N Miller St
Anaheim, CA 92806
Tel: 714-632-0882
www.zyxel.com/service-provider

We deliver technological innovations and have connected the world to the internet for 35+ years. Whether establishing access through fixed or mobile broadband solutions, we offer a comprehensive and flexible portfolio of products that keep service providers ahead of the competition.

EXHIBITOR LIST

3-GIS	1633
A-AERIAL, A DIVISION OF ALTEC INDUSTRIES ...	1713
ACCELIGHT TECHNOLOGIES, INC.....	812
AFL.....	839
ALLIED BOLT, INC.	1145
ALTEC-FENEX.....	1613
AMERICAN POLYMER COMPANY	820
AMERICAN POLYWATER	723
AMERICAN PRODUCTS, LLC	1433
ARIA BY PROLABS	847
ASENTRIA CORPORATION.....	721
ATKORE	813
BAYCOM, INC.	1812
BELDEN	1039
BLUE DIAMOND INDUSTRIES, LLC	1734
BORDER STATES ELECTRIC.....	1424
BROTHER INTERNATIONAL CORPORATION.....	1814
BROWN & BROWN	527
BUDCO, INC.....	1022
CABLESOUTH CONSTRUCTION, LLC.....	622
CAMOZZI AUTOMATION, INC.....	1635
CE+T AMERICA	1918
CENTILLION SOLUTIONS	741
CENTURY-TYWOOD J3 CORPORATION	732
CHANNELL	827
CHARLES INDUSTRIES LLC, AN AMPHENOL COMPANY	1113
CHR SOLUTIONS	539
CLEARFIELD, INC.....	913
CLINTON ELECTRONICS.....	1122

COMMSCOPE HOLDING COMPANY, INC.	1131	EMTELLE	1339
CONDUIT DIRECT GROUP	823	ENGINUIITY COMMUNICATIONS	1233
CONDUX	830	ESRI.....	1632
COPPERHEAD INDUSTRIES.....	720	ETA INTERNATIONAL.....	535
CORNING OPTICAL COMMUNICATIONS	1239	EXCEL UTILITY CONTRACTORS.....	718
CRAFTMARK CABLE MARKERS	1321	EXPRESS-TEK.....	617
CREEK ENTERPRISE AND CREEK PLASTICS.....	1618	FCST CO., LTD.....	1544
CTICONNECT	817	FEATURE ROUTE MAPS	522
CYBERPOWER SYSTEMS, INC.....	935	FIBER BROADBAND ASSOCIATION	1148
CYCLOMEDIA TECHNOLOGY, INC.	719	FIBERFOX AMERICA, INC.....	1345
DANELLA CONSTRUCTION, INC.....	1346	FINLEY ENGINEERING	613
DEFANG TECHNOLOGY SOLUTIONS, LLC.....	1247	FREMCO USA	1348
DONGGUAN HX FIBER TECHNOLOGY CO., LTD.....	1834	FULCRUM	716
DURA-LINE.....	1139	GCG TELECOM & BROADBAND.....	727
DYS FIBER OPTIC LIMITED	1213	GENERAL MACHINE PRODUCTS (KT), LLC	1028
		GEOGRAPH TECHNOLOGIES, LLC	1144
		GLASMASTERS.....	1839
		GMFTEL, LLC	634
		GO!FOTON	1331
		GRAYBAR.....	1413
		GREAT LAKES DATA RACKS AND CABINETS	1639
		HAMMOND MANUFACTURING	1047
		HEXAD SOLUTIONS GROUP	639
		HEXATRONIC.....	833
		HFCL, LTD.....	939
		HS SPRINGSTEEN ENTERPRISE	842
		HUBBELL, INC.....	1739
		HUIZHOU FIBERCAN INDUSTRIAL CO., LTD.....	1250
		HYESUNG CABLE AND COMMUNICATION, INC.....	1629
		ICEQUBE, INC.....	1721
		INCAB AMERICA, LLC	717
		INNO INSTRUMENT AMERICA, INC.....	1533

CONGRATULATIONS!

Ed Bryan
Adtran

**VOLUNTEER
OF THE YEAR
AWARD**

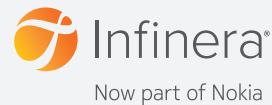
TIA | QuEST Forum

In recognition of outstanding
service, dedication and
contributions to TIA QuEST
Forum and industry objectives.

INTELLIGENT MAPPING.....	1832
IQGEO.....	1419
J&H AMERICAN ENCLOSURES, LLC.....	730
JAMESON TOOLS.....	1053
JONARD TOOLS.....	1020
KGPCO.....	1125
KNET AMERICAS, INC.....	1420
KOREA OPTRON CORPORATION.....	739
KRAMER SERVICE GROUP.....	626
LEGRAND.....	1352
LEOCH® BATTERY CORPORATION.....	1733
LIGHT BRIGADE.....	921
LIGHTERA.....	1229
LINE-SCAPE.....	1447
LYNDDAHL TELECOM AMERICA.....	1334
LYNKFAST.....	526
LYNN.....	1027
MACLEAN NETWORK SOLUTIONS.....	1325
MATRIX-NDI.....	1535
MAVERICK CORPORATION.....	1520
MAXCELL.....	840
MICHELS UNDERGROUND CABLE, INC.....	1318
MILLENNIUM.....	1328
MILWAUKEE TOOL.....	1620
MOLEX.....	635
MOUNTAIN LTD.....	1525
MP NEXLEVEL, LLC.....	638
MULTILINK, INC.....	1217
NATIONAL ONDEMAND, INC.....	912
NDS, INC.....	1523
NEPTCO.....	816
NETCEED.....	640
NETCON, LLC.....	1624

NEW RIVER ELECTRICAL CORPORATION.....	534
NEW VENTURE TELECOM.....	631
NEWBASIS.....	1038
NWS.....	1045
OCIUS-X.....	925
OLDCASTLE INFRASTRUCTURE.....	1313
OMNI (OPTI-COM MANUFACTURING NETWORK).....	712
OOMA.....	1545
PANDUIT.....	1513
PARAGON NAVIGATOR, INC.....	731
PLP.....	1013
PLUGIN OPTICS.....	738
PLUMETTAZ AMERICA CORPORATION.....	1146
POWER & TEL.....	1312
POWERLINE HARDWARE.....	920

CONGRATULATIONS!



**PARTICIPANT
OF THE YEAR
AWARD**

TIA | QuEST Forum

In recognition of outstanding
service, dedication and
contributions to TIA QuEST
Forum and industry objectives.

POWERTEC SOLUTIONS INTERNATIONAL	1423	TILSON	1040
PRIORITY WIRE & CABLE	1444	TINIFIBER	533
PRYSMIAN	1439	TKI	838
QUEST CONTROLS	1120	TMC CO., LTD.	1046
R&M USA, INC.	612	TONER CABLE EQUIPMENT, INC..	746
RADD NETWORK SOLUTIONS, INC..	1823	TRIDENT SOLUTIONS.	1042
RAINBOW TECHNOLOGY CORP.	1621	TRIMM, INC..	728
RAYCAP	713	UCL SWIFT NORTH AMERICA.	1427
REEF INDUSTRIES, INC..	1445	UNDC	846
RENDER NETWORKS, INC.	1628	UNITEK GLOBAL SERVICES	1539
ROXTEC USA	1829	US CONEC	734
SEEMESIGN	1151	UTICOM SYSTEMS, INC..	1729
SMARTY.	538	UTILISOURCE, LLC.	629
SMG TRAILERS	1728	VELOX.	832
SOUTHWIRE.	1638	VERTICAL CABLE	735
SUMITOMO ELECTRIC LIGHTWAVE.	1033	VERTIV	1813
SUNHILLO	747	VETRO, INC.	1422
SUPERIOR ESSEX COMMUNICATIONS.	1119	VIKINOR.	929
TAKFLY COMMUNICATIONS CO., LTD..	1717	VITRUVI SOFTWARE.	1519
TECHNETIX	1724	VIVAX-METROTECH.	826
TEEL PLASTICS, LLC	947	WESCO.	1032
TERRA STAR, LLC	943	WESTELL TECHNOLOGIES, INC.	1529
TERRA-VAULTS, INC.	1347	WESTERN PACIFIC TELECOMMUNICATIONS.	821
THE GALLOWAY GROUP	1251	YUYAO HEJOR COMMUNICATION EQUIPMENTS CO., LTD..	623
THERMAL EDGE, INC..	1522	ZYXEL COMMUNICATIONS, INC..	1518
TII TECHNOLOGIES, INC..	1223		



For the most current list of exhibitors and their product categories, visit www.iseexpo.com, or scan the QR code to download the app.

ISE EXPO
ICT SOLUTIONS & EDUCATION

AUGUST 18-20, 2026
MUSIC CITY CENTER
NASHVILLE, TN

SAVE THE DATE!

LEADING THE FUTURE OF NETWORK
CONNECTIVITY

● LIVE FROM NASHVILLE



Owned and Produced by:



Presented by:



ISEEXPO.COM



Open Source and Open Broadband Standards Offer the Ingredients for Success

The Broadband Forum accelerates open-source development to meet evolving user and industry demands.

BY LINCOLN LAVOIE

Broadband Service Providers (BSPs) are increasingly prioritizing a richer, more tailored broadband experience for the end-user, recognizing that fast speeds alone are no longer the key differentiator. With this important consideration in mind, the Broadband Forum recently realigned its work areas.¹ The changes ensure that every new project and specification focuses on enabling services-led and intelligent broadband that provides the applications and services most demanded by users.

As part of this, the Forum's open broadband standards are continually refined to help define lasting, normative descriptions and the requirements of the systems, interfaces or Application Programming Interfaces (APIs). Standards help the industry align on common architecture and future migration approaches, and lay out a uniform set of rules and design principles



to adhere to. Alongside this, open-source software initiatives help underpin the universal success of real-world deployments.

Updated Restructure for an Updated Shift

As part of the realignment, the intention was to streamline the organization, making it easier for its members to engage in its standards work and help deliver an improved broadband user experience.

The five work areas cover access networks, connected users and subscriber networks, network architecture, cloud and autonomous networks, and service requirements. They are supported by an advisory group providing the necessary expertise to produce high-quality YANG data models and management specifications spanning multiple work areas.

Broadband Forum's current work areas are:

- **Access Work Area** — The group focuses on delivering multi-vendor interoperability for last mile broadband deployments across fiber, copper and wireless networks.
- **Connected User Work Area** — Develops specifications for the deployment, management and consumption of services by the end-users.
- **Network Architecture Work Area** — Develops the architecture and nodal requirements for end-to-end broadband deployments across traditional and converged networks to ensure the best possible quality of experience for users.
- **Provider Cloud Work Area** — Defines frameworks and specifications to enable broadband services and networks to utilize cloud-based deployment approaches, including automation leveraging machine learning (ML) and artificial intelligence (AI).
- **Service Requirements Work Area** — Defines user-centric, normative requirements and specifications for services utilizing BSPs' subscriber, access and core networks. The group will address real-world broadband challenges and align with evolving industry priorities to bridge the gap between the network adopter and subscriber needs and technical innovation.

Open-Source Blueprints

While Broadband Forum's five work areas are open to its membership, non-members and members from across the industry contribute to its eight open broadband projects.

These open-source initiatives deliver reference implementations and software development kits, serving as examples of how Broadband Forum specifications can be implemented. They act as baseline platforms for more services and applications, with updates to the code available as the specifications mature. Those involved can access the community-developed and tested source code and be part of the development process.

Open-source software provides device and equipment vendors with a code base that they can integrate into their devices

and their existing systems. These open-source software blueprints also act as a valuable starting point for application developers to base their designs on. In turn, those applications can be made available on platforms for BSPs to select and offer to their customers. Tellingly, this shortens the path between the development and test stages of a specification to the first deployments of the technologies and solutions into the network. It can also lower the overall research and development (R&D) and maintenance costs of the common code base shared and supported by the community.

These open-source implementations for different components in the network can also provide invaluable feedback during the standardization process. They uncover areas that require more detail, identify implementation changes, or pinpoint necessary adaptations to improve interoperability. When the likes of AI and energy efficiency are being developed, this is often enabled by access to open-source software. R&D projects can use the pre-built code to add AI or energy efficiency, for example, to a network function rather than starting over.



Fast speeds alone are no longer the key differentiator.

Broadband Forum is currently working on the following open-source projects:

- **OB-5WWC (Open Broadband – WWC Reference Implementation for 5G-RG)** — The OB-5WWC project provides a reference architecture and base code for 5G fixed-line RG devices, meeting the requirements within BBF and 3GPP's WWC specifications.
- **OB-BAA (Open Broadband-Broadband Access Abstraction)** — Delivers an open reference implementation specifying the Northbound Interfaces (NBI), Core Components and Southbound Adapter Interfaces that operators and vendors worldwide can use

to develop and deploy interoperable cloud-based access networks more easily and quickly.

- **OB-CAS (Open Broadband CloudCO Application Software Development Kit)** — Aims to make monitoring and maintenance easier for BSPs by providing a software development kit enabling them to easily integrate applications, leveraging the BBF's automated intelligent management (AIM) framework into their access network management platforms.
- **OB-MAP (Open Broadband-Multi Access Point)** — Developing a high-level data model for network operators that would ease the configuration of Wi-Fi across the home. The group generates requirements for features that extend and enhance the Wi-Fi Alliance EasyMesh and Data Elements specifications for use in a BSP-managed subscriber local network via BBF technologies TR-069 and User Services Platform (USP).
- **OB-STAMP (Open Broadband - Simple Two-Way Active Measurement Protocol)** — This measurement component, outlined in TR-390.2³ aims to reduce the cost and time of deploying and implementing infrastructure for measuring network latency in BSP networks, particularly to and within the home. It operates as a containerized application within the USP paradigms.
- **OB-STEER (Open Broadband Subscriber Session Steering)** — Provides a reference implementation for key elements of the Subscriber Session Steering architecture as currently worked out in BBF's WT-474 project to deliver flexible, on-demand connectivity, failover functionality, and simplified network management.
- **OB-UDPST (Open Broadband User Datagram Protocol Speed Test)** — Open source implementation of a tool to measure the network metrics defined in TR-471: IP Layer Capacity Metrics and Measurement.³ This empowers BSPs to conduct segment-by-segment or comprehensive end-to-end connection quality assessments, spanning from the

network edge, through the access network, and even within the home or business network.

- **OB-USP-Agent (Open Broadband-User Services Platform-Agent)** — Creates a reference implementation of the USP specification from a USP Agent perspective, that would typically reside in CPE. OB-USP-Agent provides a common, community supported code base, that is already being integrated into downstream open-source projects like Prpl and RDK-B.

“Open-source software initiatives help underpin the universal success of real-world deployments.”

Trio of New Open-Source Projects Underway

The OB-CAS, OB-STAMP and OB-STEER projects are the most recently introduced⁴ by the Broadband Forum and bring together software developers and standards experts from across the organization. The new projects are set to deliver an improved user experience, simplified network performance measurement and monitoring for BSPs, and a wider choice of in-home applications for broadband consumers.

The projects provide a foundation for AI and ML for network automation, additional tools for network latency and performance measurements, and on-demand connectivity for different applications. OB-CAS is simplifying network operations and automating them through existing Broadband Forum cloud standards that use AI and ML to improve the end-user experience.

OB-STAMP is building a component that simplifies the measurement of network performance between CPE and the IP Edge. The project is set to allow BSPs to monitor home networks, measure latency, and avoid network failures. OB-STEER will allow network operators to offer flexible, on-demand connectivity and is set to be interoperable for implementation in the

access network and edge equipment from various vendors.

Together: Successful

The marriage of open broadband standards and the latest software developments are laying the foundations for improved end-user experiences—a core focus across all Broadband Forum work areas and open-source software projects.

As BSPs look to expand their offerings beyond the broadband connection, the synergy of open source and open stan-

dards will play a pivotal role in this evolution. Broadband Forum's open-source efforts mirror the open, technology-neutral nature of the organization where everyone's voice is heard.

If you are interested in joining Broadband Forum's open source and open standards projects, contact: help@broadband-forum.org. ■

REFERENCES

1. ISE Magazine article, <https://isemag.com/55284080>
2. Broadband Forum report, <https://www.broadband-forum.org/pdfs/tr-390.2-1-1-0.pdf>
3. Broadband Forum Technical Library, <https://www.broadband-forum.org/technical-library/?number=TR-471>
4. Broadband Forum projects, <https://www.broadband-forum.org/2025-03-05-broadband-forum-launches-three-new-open-broadband-projects>



Lincoln Lavoie is a principal engineer, and executive team member, at the University of New Hampshire Interoperability Labs (UNH-IOL). For more information, visit www.broadband-forum.org. Follow Lincoln and the Broadband Forum, respectively, on LinkedIn: [linkedin.com/in/lylavoie/](https://www.linkedin.com/in/lylavoie/) and [linkedin.com/company/broadband-forum/](https://www.linkedin.com/company/broadband-forum/).



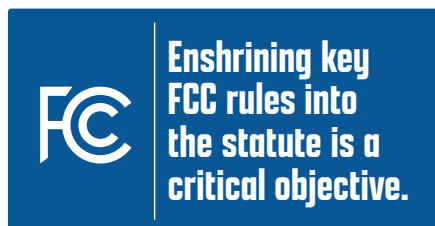
The Need for Legislation for Broadband and Wireless Infrastructure Permitting

With mobile data demand rising and 5G rollout accelerating, the Wireless Infrastructure Association calls for comprehensive legislation to fix the fragmented permitting process—and protect connectivity's future.

BY MIKE SAPERSTEIN

In today's rapidly evolving digital landscape, the demand for robust and reliable wireless communication infrastructure has never been greater. As we continue to witness the proliferation of smartphones and IoT devices and the advent of 5G technology, including fixed wireless access (FWA), the importance of wireless infrastructure and its efficient deployment becomes paramount.

Over the past decade, the permitting process for towers has been greatly improved, supported by the regulatory actions taken by the Federal Communications Commission (FCC). However, recent court rules make any federal-level agency actions less certain, and the process of obtaining permits for new towers and colocating equipment on existing towers continues to face challenges within some jurisdictions. As a result, the Wireless Infrastructure Association (WIA) is calling for comprehensive legislation to streamline and facilitate wireless deployment.



Challenges in Cell Site Permitting

The communications industry works every day to deploy infrastructure that supports mobile and fixed connectivity across the country. In doing so, we've become well-acquainted with the complex web of local, state and federal regulations that is the permitting process in many locations today. Local governments absolutely have a role to play in siting wireless infrastructure, but permitting regulations can vary significantly from one jurisdiction to another, leading to inconsistencies and delays in the deployment process. Additionally, the lack of standardized procedures across different regions can result in inefficiencies and increased costs, which ultimately cost all of us who use the networks.

This is an everyday, lived experience for those working on the frontlines to ensure Americans stay connected, as well as making sure that the industry can continue to meet the ever-increasing demands for data placed on networks today. There are now over 12.5 million fixed wireless subscribers, and according to Ericsson, total

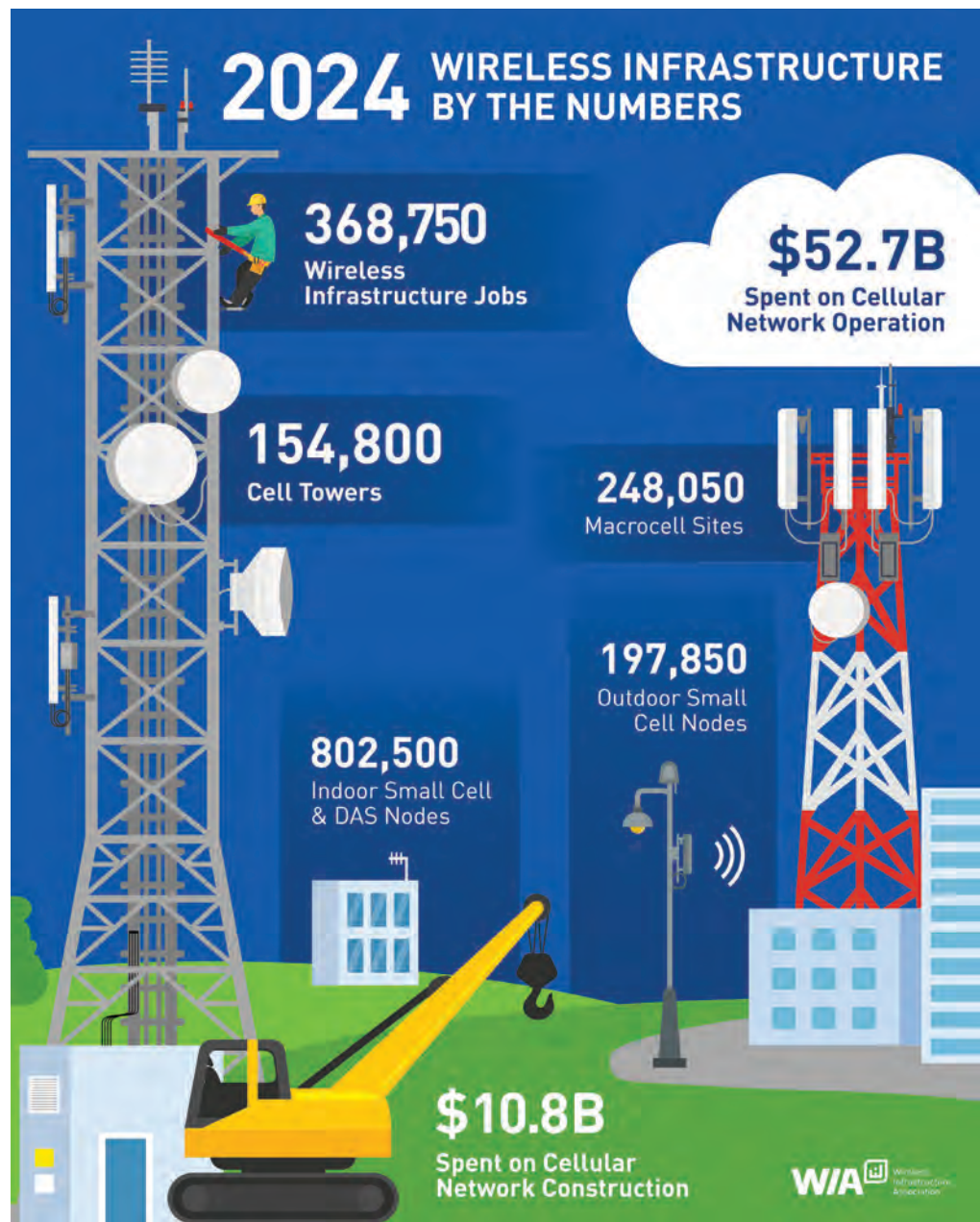


FIGURE 1.

mobile data traffic is estimated to grow threefold between the end of 2023 and the end of 2029.

The good news is that over the last 10 years, the FCC has adopted orders that support the speedy deployment of communications networks with predictable, proportionate and transparent permitting processes. These rules have been a catalyst for the explosive deployment of broadband and 5G access across the United States. For example, in the two years after the FCC's 2018 Small Cell

Order, investment in wireless infrastructure surpassed the previous seven years combined, and more than half of the cell sites currently in service were deployed after the FCC adopted siting reforms. By the end of 2024, just over 651,000 structures supported wireless infrastructure across the US, according to WIA's recent Wireless Infrastructure by the Numbers report.¹ (See Figure 1.)

Still, some local governments have refused to follow these orders, delaying deployment and resulting in time- and

capital-intensive challenges. Worse, some federal judges have elected not to follow the directives of the FCC's rules and have more latitude to make their own non-standardized rules under new precedents, injecting more uncertainty into the process. Enshrining key FCC rules into the statute is a critical objective.

Legislative Solutions

To address these challenges, there is a pressing need for legislation that standardizes and streamlines the wireless infrastructure deployment processes. Ensuring a predictable, proportionate and transparent permitting process that respects state and local review must be a priority for Congress and state legislatures to achieve the goal of providing broadband access to all Americans. Such legislation should aim to provide:

- **Clear Timelines:** Enshrine existing FCC orders into law at the federal and state levels, providing predictable timelines for application processes, including “shot clocks” on permit applications for wireless facilities, providing timelines for deciding upon an application, and “deemed granted” relief where an authority fails to act on the application in the given time. If the answer is no, tell us and we can work to fix it! This maintains a role for municipalities but gives them a deadline and provides industry with certainty, resulting in quicker connectivity for communities.
- **Reasonable Fees:** Fees charged for applications must be calculated based on actual costs, established in advance and publicly disclosed. This creates certainty among all parties.
- **Streamlined Site Upgrading:** Codify FCC rules that allow existing sites to expand the compound by up to 30 feet and add reasonable additional equipment cabinets and antennas without going through further review processes. The structure already exists, and adding new facilities is often the least intrusive means of siting new infrastructure.
- **Streamlined Environmental and Historic Review:** Establish shot clocks

for applications on federally managed lands and recognize where environmental and historic reviews would be unnecessary, such as in disaster recovery areas and previously disturbed Rights of Way.

American Broadband Deployment Act

The most important step Congress and the Trump Administration can take is to reintroduce and enact the American Broadband Deployment Act (ABDA). ABDA is a legislative package from the last Congress that would codify several major permitting reforms enacted by the FCC

reducing ambiguity and ensuring that all stakeholders understand the requirements, timelines and fees.

Encouraging collaboration between local governments, telecommunications companies and other stakeholders can lead to more efficient and effective deployment strategies. State legislation is aimed at fostering partnerships and open communication channels to address concerns and find mutually beneficial solutions. Several more states are considering permitting legislation, and WIA will continue to work closely with states through the remainder of the 2025 legislative sessions.



Local governments absolutely have a role to play in siting wireless infrastructure.

and right-size federal rules for broadband permitting on federal lands to spur deployment. ABDA would carefully balance and respect the important role of localities in maintaining the aesthetics, character and safety of their community while also ensuring the timely deployment of needed infrastructure.

Beyond codifying FCC orders on infrastructure deployment, ABDA takes proactive steps to improve siting on federal lands and reduce unnecessary red tape for applications to deploy or improve communications networks. If enacted, this bill would ensure that all communities have consistent rules for siting infrastructure, speeding deployment and reducing overall costs for consumers.

WIA is actively working on the Hill to advance these policies.

State Legislation

Across the country, WIA is working hand-in-hand with states to also codify the FCC's orders for broadband deployment at the state level, with recent success in West Virginia and Colorado. Similar to ABDA, these bills provide clear and consistent guidelines for the permitting process,

Conclusion

At WIA, our goal is to help establish the best business and regulatory environment possible to help our members meet the mission of enabling connectivity everywhere. For permitting, this means we need predictable, proportionate and transparent processes. A consistent permitting framework set at a national level but flexible enough to accommodate local needs and interests is the key to sustained success for wireless infrastructure deployment. ■

REFERENCE

1. WIA's *Wireless Infrastructure By the Numbers: 2024 Key Statistics*, <https://wia.org/wireless-infrastructure-by-the-numbers-2024/>



Mike Saperstein is the Chief Strategy Officer and Senior Vice President for Government Affairs for the Wireless Infrastructure Association (WIA). For more information, visit www.wia.org. Follow WIA on LinkedIn: [linkedin.com/company/wireless-infrastructure-association/](https://www.linkedin.com/company/wireless-infrastructure-association/) and X @WIAorg.

Is Your Fiber Network Routed for Success?

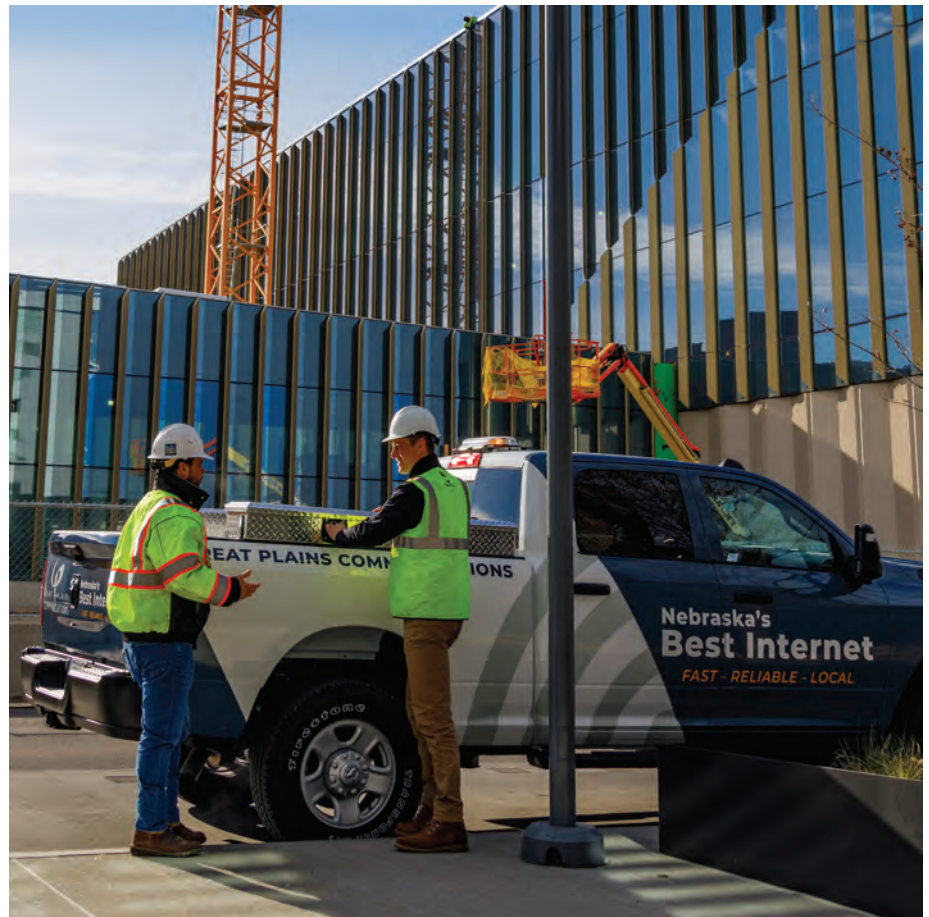
A successful fiber network isn't just about coverage—it's about strategy, scalability and sustained performance.

BY CHRIS SIKORA

The telecommunications industry has seen a variety of historical trends, whether it was the dot-com boom, the rush to near-net buildings, or today's intense focus on fiber-to-the-home (FTTH) passings. History shows that without an effective ROI strategy, these trends can create long-term challenges.

For fiber providers serving a broad mix of customers and communities, network design must go beyond coverage. It should be purpose-built to address a range of needs, from residential and business connectivity to high capacity demands from hyperscalers and towers. That requires engineering routes with the foresight to enable scalability, ensure sustainability and maximize ROI on every mile of deployed fiber. Strategic planning and sufficient capacity are essential to support future growth and evolving community needs.

After more than 25 years in telecom and technology, I'd like to share some of my observations on trends I see shaping our industry for the future and some key strategic moves I strongly recommend considering today. If there's one thing I've learned, it's that a strategic, synchronized approach to fiber construction and customer acquisition is critical.



Great Plains Communications (GPC)

Construction Strategy, Service Delivery and Future Needs

Technologies like GPON, Ethernet, dark fiber and wavelength services offer flexibility, but strategic planning is what drives strong returns on capital. For providers serving a mix of customer types, each fiber build should be approached through a multi-segment lens: Can this route support residential homes and apartments?

Are we capturing anchor institutions like hospitals, schools or government buildings along the way? Is there an opportunity to connect a small business with GPON and a regional bank or manufacturer with Ethernet?

Capacity planning must also look beyond today's demand. Every build should be treated as a long-term investment, guided by questions such as: What's likely to change in the near and distant



Every build should be treated as a long-term investment, guided by questions such as: What's likely to change in the near and distant future? What's the next opportunity? What will customers need tomorrow that they may not need today?

future? What's the next opportunity? What will customers need tomorrow that they may not need today? This forward-looking mindset is key to building networks that deliver value well into the future.

Here are a few considerations and recommendations to maximize revenue:

Misconceptions and Customer Expectations

One of the biggest misconceptions I see in our industry is the idea that being first to fiber guarantees long-term success. While that can be true in some cases, it is not a given. Incumbents can and do protect their base more aggressively than expected, forcing newer entrants to fight harder for market share. If you haven't built in the ability to pivot or densify, ROI and take rates can suffer.

I once worked for a CEO who said that the most impactful thing we could do for every stakeholder, including communities, customers, employees, regulators and shareholders, was to run a financially sound business that truly prioritized the customer's success.

Customers want solutions that help them best live their connected daily lives, with minimal obstructions. They want low latency and a reliable, secure connection for themselves, their employees and their customers. They want easy access to solutions like managed Wi-Fi for residents and businesses, managed firewall protection against evolving cyber threats, and unified communications—all services that enhance their connected lives. And when those services come from one local provider embedded in the community with firsthand knowledge of the community needs and culture, the customer success and overall experience are that much stronger.

At Great Plains Communications (GPC), we've leaned into densification in markets like Omaha, Nebraska. We didn't try to go wide first; we went deep. Starting with commercial customers, we gradually built a residential presence, creating market diversity that delivers more stable, predictable returns. It's a strategy that strengthens customer experience and financial performance alike.

Hyperscalers, Data Centers and the Digital Divide

Connecting metro markets via middle-mile fiber has long been considered a top priority. However, with the increasing use of AI, cloud computing and sophisticated enterprise networks, the landscape has changed significantly. Data centers and hyperscalers, such as Amazon Web Services (AWS), Google Cloud Platform (GCP) and Microsoft Azure, are becoming critical components of our connectivity system. For AI applications to process massive amounts of data in real-time, strong infrastructure with flexible architecture and technologies that provide low latency and increase network capabilities and resiliencies to support the bandwidth required to operate these data centers are essential. Continuous advancements in network technology and infrastructure to keep pace with AI's rapid development should be on the to-do list for providers everywhere.

The current goal is to bring fiber-driven services, including high-speed internet, to communities everywhere (frequently referred to as "closing the digital divide"). To be successful in the future, a provider must continually monitor market trends and look at each upcoming project strategically when entering to serve the entire community. Are there potentially multiple customers and revenue opportunities

across different lines of business? Is current capital sufficient for success, or will a project justify government funding? Can a provider pivot and execute successfully if an opportunity arises?

Market Analysis and Boots on the Ground—A Winning Combination

Market analysis plays a vital role—but like most things, it's both an art and a science. Earlier in my career, I worked for one of the original CLECs. I moved from a well-established Manhattan market to help launch a new market in New Jersey. When we got the route maps from the network design team, they were based on wholesale demand sets. It looked good on paper—until we realized the fiber was passing dozens of AT&T office buildings because one customer dominated the data. We hadn't fully accounted for concentration risk.

That experience taught me that data is critical, but it can't be the only lens. Boots on the ground matter. Local insight, strong community relationships and an ongoing commitment to being part of the market's fabric are essential. It's not enough to build fiber and move on. Providers need to be trusted technology partners, in it for the long haul, committed to helping communities grow and thrive with next-generation connectivity.

Fiber has incredible power to transform economies and lives, but only when deployed strategically, thoughtfully and sustainably. Providers who approach fiber with a mindset of maximizing ROI, enabling customer success and planning for the future will be the ones who drive real progress and reap the rewards. ■



Chris Sikora is Chief Revenue Officer, Great Plains Communications (GPC). For more information, visit gp-com.com. Follow Chris on LinkedIn: [linkedin.com/in/christopher-sikora/](https://www.linkedin.com/in/christopher-sikora/). Follow GPC on LinkedIn: [linkedin.com/company/great-plains-communications](https://www.linkedin.com/company/great-plains-communications) and Facebook: [facebook.com/GreatPlainsCommunications](https://www.facebook.com/GreatPlainsCommunications).

The Case for Environmentally Sustainable FTTH Networks

Operators that integrate sustainability into fiber planning, deployment and operations gain more than a greener footprint—they gain a strategic edge in cost and performance.

BY JAY CADMAN

Across industries, economic pressures have led many organizations to scale back sustainability initiatives. Yet for telecom operators, the path to a greener future is not only environmentally responsible but also financially advantageous. Fiber-to-the-home (FTTH) networks present a rare convergence of operational efficiency and carbon footprint reduction, offering long-term value in a volatile marketplace. One of the most compelling examples of this convergence is the stark difference in energy efficiency between FTTH and legacy broadband networks.

FTTH networks consume significantly less energy than legacy hybrid fiber coaxial (HFC) systems. A recent report¹ found

that FTTH network operations generate up to 96% fewer carbon emissions compared to HFC networks. This dramatic reduction translates directly into cost savings, making sustainability not just a corporate social responsibility effort but a business imperative.

Moreover, fiber's reliability

means fewer service disruptions. This translates into reduced maintenance costs, fewer field technician dispatches and decreased fuel consumption for service vehicles. By minimizing unplanned maintenance events, operators also reduce customer churn, preserving revenue and brand reputation. However, the environmental case for FTTH isn't limited to operational energy savings; it extends across the network's entire life cycle.

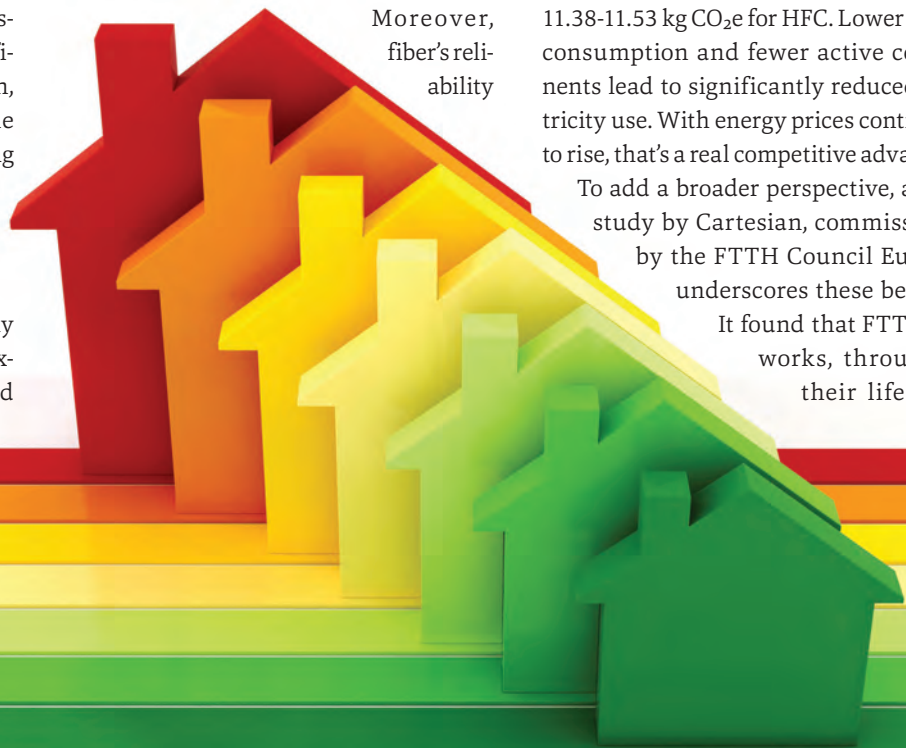
Environmental Concerns and Operational Efficiency

The environmental benefits of FTTH go beyond reduced carbon emissions. Fiber's efficiency results in fewer active components, lower power consumption and more reliable performance over time. These factors together reduce operational overhead.

For instance, a recent white paper by the Fiber Broadband Association¹ found that the carbon footprint of FTTH network operations is up to 96% lower than that of HFC networks, and installation emissions are 7% lower. Given the rising cost of energy, minimizing operational power usage directly impacts the bottom line. FTTH XGS-PON OLT technology, for example, generates just 0.42-0.83 kg CO₂e per home passed annually, compared to 11.38-11.53 kg CO₂e for HFC. Lower power consumption and fewer active components lead to significantly reduced electricity use. With energy prices continuing to rise, that's a real competitive advantage.

To add a broader perspective, a 2024 study by Cartesian, commissioned by the FTTH Council Europe,² underscores these benefits.

It found that FTTH networks, throughout their life cycle



from production to deployment and operation, consistently outperform legacy networks in terms of energy efficiency and carbon footprint. The study also highlights FTTH's role in supporting the EU's climate goals and the twin transitions of digitalization and sustainability.

In the United States, environmental, social and governance (ESG) frameworks³ are also driving telecom operators to rethink infrastructure strategies. US-based investors, regulators and institutional funds increasingly factor ESG metrics into decision-making. While adoption varies by region, national telecoms recognize that aligning with ESG goals can improve access to capital, attract sustainability-minded investors and demonstrate long-term operational resilience. Turning these environmental and strategic goals into operational reality requires smarter, data-driven network planning and deployment practices.

The Role of Precision GIS Planning

Building a sustainable FTTH network requires more than just selecting fiber over copper or coaxial. It requires a strategic approach to network planning, design and deployment. Precision fiber network planning, supported by digital tools, ensures that environmental and operational efficiencies are embedded from the outset. Geospatial information system (GIS) planning tools have emerged as a cornerstone of sustainable FTTH deployment. These platforms enable operators to:

- Optimize routing using existing infrastructure, minimizing new trenching and excavation.
- Rapidly model multiple deployment scenarios to select the most sustainable and cost-effective approach.
- Incorporate real-world factors like terrain and local infrastructure to avoid costly and disruptive rework.

This kind of precision in network planning lays the foundation for sustainable growth as operators move into new, often more challenging markets. The adoption of GIS in

FTTH deployment is accelerating, driven by the escalating demand for gigabit broadband and government digitalization initiatives. GIS tools are instrumental in market analysis, network planning, engineering and maintaining network inventories. These tools also improve collaboration between field crews and office-based planners, reducing errors and streamlining operations.

Once the FTTH networks are deployed, the way they're operated and maintained becomes the next critical factor in minimizing environmental impact.



Fiber's reliability means fewer service disruptions. This translates into reduced maintenance costs, fewer field technician dispatches and decreased fuel consumption for service vehicles.

Smarter Operations

Ongoing maintenance significantly impacts an FTTH network's environmental and financial footprint. Smart operations shift maintenance from reactive to proactive, enhancing sustainability. Remote diagnostics and predictive maintenance tools detect issues early so operators can resolve problems without field visits. Emerging technologies are making this proactive, low-impact operational model increasingly achievable.

New AI-powered visual automation technologies are redefining how telecoms manage quality and compliance. These systems process video and image data captured in the field to validate installation quality, track construction milestones and flag deviations in real time. Automating these inspections improves first-time-right rates, eliminates unnecessary truck rolls and ensures data-driven maintenance cycles that reduce cost and emissions.

Unlike traditional reactive models, AI-enhanced network operations rely on proactive issue detection, dynamic updates to network inventory and improved documentation. These capabilities enable

better capital planning and support ESG reporting through verifiable performance metrics. As the industry continues evolving, such tools will be essential for keeping sustainability and operational discipline aligned.

Automation enhances resource allocation. Digital workflows ensure that crews are dispatched only when needed and equipped with accurate information. This reduces delays, minimizes waste and improves efficiency. Smarter operations, enhanced by AI-powered technology, also extend network asset life. Fewer

replacements mean lower capital expenditures and less environmental impact over time. Operational improvements like these have a direct bearing on telecom's ability to meet ESG criteria and secure sustainable financing.

Sustainable Finance and ESG

The sustainability credentials of FTTH are no longer just environmental, they are increasingly financial.⁴ As investors, regulators and policymakers emphasize ESG criteria, FTTH networks are being recognized as green infrastructure assets, qualifying for sustainable finance and favorable investment terms. This financial alignment is supported by FTTH's operational efficiency and its role in enabling equitable digital access, both of which advance broader societal and policy goals.

As ESG frameworks gain traction, particularly in the U.S., telecom operators are integrating sustainability metrics into corporate reporting and infrastructure strategies. Federal broadband and infrastructure initiatives are beginning to prioritize projects that align with ESG principles, rewarding



COMPLIMENTARY MAGAZINE SUBSCRIPTION + NEWSLETTER



Scan our QR code or
visit isemag.com/subscribe!

ISE
ICT SOLUTIONS
& EDUCATION

Transforming Telecom
for Network, Infrastructure
& ICT Pros

ISE
EXPO
ICT SOLUTIONS & EDUCATION

operators that demonstrate carbon reduction, digital inclusion and long-term operational resilience.

To capture these financial, operational and environmental benefits, operators need clear, actionable sustainability roadmaps that embed ESG considerations across network planning, deployment and operations. This positions FTTH not just as a connectivity solution but as a strategic investment in sustainable infrastructure.

Strategic Next Steps for Telecom Operators

To realize FTTH's sustainability and efficiency potential, operators should adopt full-life cycle strategies:

- **GIS-based planning** to integrate real-world data, optimize routes and reduce environmental impact.
- **Automated design tools** to reduce material waste and deployment time.
- **AI-enhanced smart operations** to reduce emissions, enable predictive maintenance and improve resource use.
- **ESG integration** to position FTTH as a green asset and improve stakeholder engagement.

Look for partners with interoperable, scalable and field-proven solutions that support practical sustainability goals. Together, these measures form a practical framework for telecom operators aiming to future-proof their networks while meeting environmental expectations.

As expectations around sustainability continue to rise, telecom operators must look beyond short-term fixes. FTTH networks provide a practical way to improve efficiency, reduce emissions and meet financial objectives in a single move. Success will depend on integrating technology, planning tools and ESG frameworks into a unified strategy. Those who move early will gain a lasting competitive edge in an industry where resilience and responsibility increasingly shape market value. ■

REFERENCES

1. Fiber Broadband Association report, https://fiberbroadband.org/wp-content/uploads/2024/07/FBA-059_Sustainability_WhitePaper_FIN.pdf
2. FTTH Council Europe study, <https://www.ftthcouncil.eu/resources/all-publications-and-assets/2314/fibre-networks-as-green-assets-the-role-of-sustainable-finance>
3. ASUENE Blog, <https://asuene.com/us/blog/connecting-sustainability-esg-trends-in-the-telecommunications-industry>
4. Analysys Mason article, <https://www.analysismason.com/consulting/articles/fibre-sustainability-credentials/>



Jay Cadman is Senior Vice President, Enterprise, at IQGeo. For more information, visit www.iqgeo.com. Follow IQGeo on LinkedIn: [linkedin.com/company/iqgeo/](https://www.linkedin.com/company/iqgeo/), X @IQGeo_software and YouTube: [youtube.com/@iqgeo1743](https://www.youtube.com/@iqgeo1743).

CraftMark™ SpecMark™ Ultra-Snap™

CraftMark™—The Snap On Marker Experts—have developed the SpecMark™ Ultra-Snap™ for long term (8-10 years) cable identification applications. The Ultra-Snap™ features a crystal-clear UV inhibiting over-lamination that sheds destructive UV rays as well as providing added abrasion resistance. These markers have been tested side by side with competitor's products in our in-house accelerated UV weatherometer test lab. After the equivalent of 4 years of outdoor weathering, the competitor sample was completely faded while the Ultra-Snap™ retained its brilliant color. Available in your choice of colors, logo & text.



CraftMark

Tel: 800.627.5255

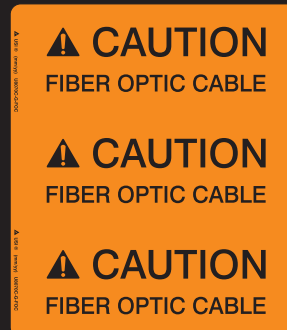
www.craftmarkid.com | glen@craftmarkid.com



109 Independence Way
Coatesville, PA 19320

graphics@uticom.net • www.uticom.net
610-857-2655 • Fax: 610-857-2986

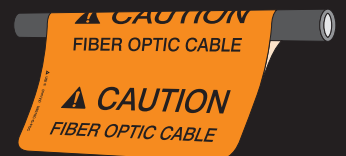
Graphics for Harsh Environments™



Application Option: Wrap



Application Option: Flag



WRAP AROUND CABLE MARKER

- Long term cable markers.
- 15 year exterior durability.
- High visibility.
- Reflective for all lighting levels.
- Non-PVC Material.
- Chemical, water, abrasion resistant.
- Rear adhesive allows wrap or flag application.

How Cable is Outmaneuvering Traditional Mobile Network Operators

By bundling broadband with mobile, leveraging agile MVNO models, and personalizing the customer experience, emerging brands are transforming into dominant telecom players.

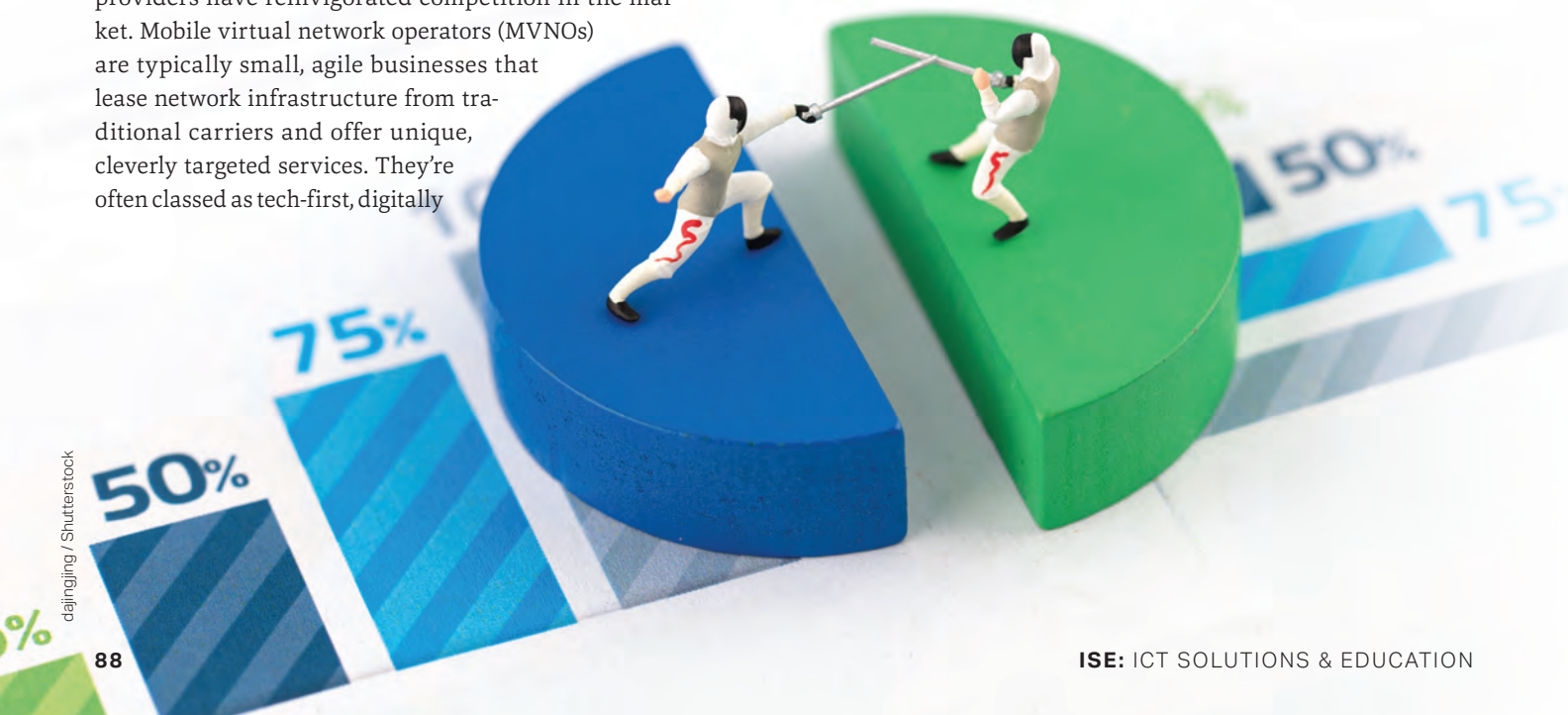
BY VIJAY SREENIVASAN & FABIANO NETTO

The mobile market has long been a stronghold for giants like Verizon, T-Mobile and AT&T. Recently, shifts in technology and consumer behavior are challenging the dominance of the “big” mobile network operators (MNOs) like never before. It’s blowing the market wide open while emerging brands vie for their slice of the action.

This disruption is by design, not by chance. The rise of high-speed wireless technologies, consumer demand for greater bandwidth and convenience, and a low barrier to entry for would-be service providers have reinvigorated competition in the market. Mobile virtual network operators (MVNOs) are typically small, agile businesses that lease network infrastructure from traditional carriers and offer unique, cleverly targeted services. They’re often classed as tech-first, digitally

savvy businesses as opposed to their much larger and slower telco counterparts. This gives them a competitive advantage in the digital space, allowing them to carefully curate and bundle their service offerings and leverage customer data to target specific market segments intelligently.

Customers are now spoiled for choice regarding cellular plans, which often act as a gateway to multiple TV and streaming services they may have been interested in purchasing. As a result, the MVNO market has more than doubled¹ in size in the last decade



and was valued at \$85.1 billion in 2024. The market is projected to be valued at \$146.3 billion by 2031.

The MNO stronghold is now under threat. The market is split, and cable companies are winning *big*. One recent market report by MoffettNathanson Research² revealed that in Q1 2024, cable companies secured three out of every four new post-paid mobile subscribers.

The Convergence of Fixed and Mobile Services

In the past couple of decades, connectivity has gone from being a luxury to a non-negotiable utility. We live in an age of remote working and high-resolution streaming, where network access is all but essential to our lives. Advancements in technologies such as fixed wireless access (FWA), 5G and satellite mean that this need for speed is increasingly being met wirelessly.

As a result, we're now witnessing the convergence of traditional wired broadband and wireless connectivity play out in real-time. The number of connected devices that the average person uses is growing, and many of those devices—smartphones, tablets, fitness trackers and more—demand connectivity that extends beyond the home. Is it any wonder that mobility is overtaking fixed wireless as a consumer priority?

Enter cable companies. By leveraging their existing broadband infrastructure and wealth of customer data, they are becoming n-play service operators (MSOs). They're offering consumers a compelling package that includes everything from high-speed home internet to mobile connectivity, not to mention the myriad TV and streaming service bundles, all under one roof. A single provider means a single bill, and that's far more appealing to customers than setting up all those services on their own.

By establishing MVNO agreements with MNOs and leveraging CBRs spectrum, cable companies are expanding beyond home-based services to offer seamless connectivity everywhere through a combination of wireless, fixed, Wi-Fi, and FWA technologies.

Charter and Comcast are leading this charge. Their mobile subscriber lines are projected to reach 28 million by 2028. They now sell mobile subscriptions alongside their home broadband packages, offering highly competitive deals and bundles to lure customers out of their existing mobile contracts. As more consumers recognize the benefits of these bundled offerings, the shift toward cable companies as the primary providers of both fixed and mobile services is accelerating, turning what was once a niche market for them into a powerful revenue stream.

Consumer Demand Driving the Shift

Mobile is a consumer's market, and it always has been. Until recently, offerings were fairly simple and linear. So, when a consumer became a subscriber, there was very little reason for them to change. Now, things are different. In addition to the allure of having all their digital services, including their connectivity, available in one convenient and competitively priced bundle, they're also on the lookout for other key differentiators.

For instance, cable companies, often more agile and willing to innovate than their traditional telco counterparts, have embraced technologies like eSIMs for easy onboarding, digital self-service platforms and data-driven personalization. These features resonate with a generation of consumers who have come to expect intuitive, hassle-free experiences.

And once consumers are subscribed, it's far easier for an agile MSO/MVNO to retain them. These companies aren't hampered by the legacy software their big telco counterparts use. They can adopt cloud-based business support systems (BSS) that allow them to predict customer churn, send personalized recommendations and suggest additional features and services to keep subscribers engaged.



We're now witnessing the convergence of traditional wired broadband and wireless connectivity play out in real-time. The number of connected devices that the average person uses is growing, and many of those devices—smartphones, tablets, fitness trackers and more—demand connectivity that extends beyond the home.

For instance, if a subscriber uses only a fraction of their data allowance, a new plan can be recommended to save them money. If a customer's usage has decreased and it looks like they're about to leave, a free trial for a new streaming service can be offered to tempt them to stay.

In other words, mobile connectivity is no longer a siloed service. It's part of the digital ecosystem. Win more of that ecosystem, and you win the market. ■

REFERENCES

1. MarketsandMarkets MVNO report, <https://www.marketsandmarkets.com/Market-Reports/mobile-virtual-network-operator-market-233615600.html>
2. MoffettNathanson Research report, <https://www.moffettnathanson.com/>



Vijay Sreenivasan is Vice President and Regional Manager for North America at Optiva, Inc. **Fabiano Netto** is Director of Solutions Engineering for North America at Optiva, Inc. For more information,

visit www.optiva.com and follow Optiva on LinkedIn: [linkedin.com/company/optivainc/](https://www.linkedin.com/company/optivainc/).

AD INDEX

ADVERTISER	PG	ADVERTISER	PG
AFL Telecommunications, Inc.	7	Multilink, Inc.	39
American Products, LLC	17	Oldcastle Infrastructure	41
Atkore	9	PLP	49
Belden	47	Power & Tel	29
Broadband Tech Show	19	Prysmian Cables & Systems	55
Charles Industries, LLC	11	RaDD Network Solutions, Inc.	26, 63
Clearfield, Inc.	92	Reef Industries, Inc.	69
Craftmark Cable Markers	87	Suncall America, Inc.	67
ISE EXPO 2026	75	Sunhillo	57
ISE Newsletter & Subscription	86	Telecommunications Industry Association (TIA)	72, 73
ISE Subscription	90	TII Technologies, Inc.	53
KGPCo	91	UCL Swift North America	59
Michels Underground Cable, Inc.	65	US Conec	5
Millennium	2	Uticom Systems, Inc.	87
MPINarada	26B		

The index of advertisers is published as a service, and the publisher does not assume any liability for errors or omissions.

COMPLIMENTARY MAGAZINE SUBSCRIPTION

Transforming telecom networks for Telecom,
Network Infrastructure and ICT Professionals

Scan here to subscribe
to our FREE magazine



4 Issues – Exploring these key focus areas:

- FTTx & Optical Networks
- Network Evolution (5G/6G, Fixed/Mobile)
- Industry Trends & Research
- Cybersecurity, Testing & Safety
- Network Transformation & Automation
- Public-Private Partnerships (P3)
- Professional Development & Leadership
- AI in Telecom
- BEAD & BABA Programs
- Edge Computing, IoT & URLLC



FACEBOOK
ISE.Magazine



LINKEDIN
ise-magazine



X [formerly Twitter]
ISE_Magazine



ISE
ICT SOLUTIONS
& EDUCATION



WEBSITE
isemag.com



YOUTUBE
isemagazine8108



MAGAZINE and NEWSLETTERS
isemag.com/subscribe

Construct. Maintain. Connect.

We Supply the Future.

As North America's premier supply chain solutions provider, we have everything you need to construct, maintain, and connect customers to your network. With a nationwide network of Distribution Centers, you'll have access to thousands of products where and when you need them – reducing order lead time and freight costs. Rely on us to coordinate all aspects of your supply chain, for your fiber build, cell site construction, or kitting projects, from inception to completion.

Visit us today at www.kgpcoco.com



Enabling the Lifestyle that

Better Broadband Provides

CLEARFIELD IS PROUD TO SUPPORT BUILD AMERICA, BUY AMERICA (BABA).



A Small but Mighty Terminal...the Smart Choice for Fiber to Anywhere

The TetherSmart Multi-Fiber Terminal employs Clearfield's signature craft-friendly design to cut costs and reduce complexity while enabling a mix-and-match approach for SC, MPO or HFOC requirements.

- Plug-and-Play Installation: industry standard connector flexibility
- Ruggedized Design: environmentally sealed and no-kink tubing for better fiber protection
- Ultra Compact: smallest 10-port terminal footprint on the market

Flexible to many network configurations, including a shifted, pass-through architecture, the TetherSmart Multi-Fiber Terminal reduces engineering time for a faster time to customer turn-up. **Ask Clearfield® how.**



CLEARFIELD

Visit us at the ISE Expo in booth #913.

Learn how to simplify your deployments at SeeClearfield.com or call 800-422-2537

